



INSTALL INSTRUCTIONS

SPARTAN REAR BUMPER

Product : 3112XR

Application : 2011-2014 Chevy 2500/3500

I WARNING

Read the instructions completely before beginning installation. Before tightening bolts, drilling or cutting where required, check to make sure there are no obstructions such as brake, fuel or electrical lines which may be damaged. Also keep in mind this is an after-market product and MAY require minor shimming and/or trimming, reaming, etc. for proper fit. Road Armor is not responsible for any damages to vehicle.

i IMPORTANT NOTICE

- Be sure to inspect and test fit your product to ensure proper fitment before having it coated, painted, bed lined, etc.
- Road Armor will not be responsible for the cost of coating your unit if any problems with fit or finish are not noted and addressed beforehand.

SAFETY FIRST!

- FOLLOW ALL INSTRUCTIONS, YOUR SAFETY AND THE SAFETY OF OTHERS IS MOST IMPORTANT.
- WEAR APPROPRIATE EYE PROTECTION AND EXERCISE CAUTION WHEN DRILLING / CUTTING

REQUIRED TOOLS

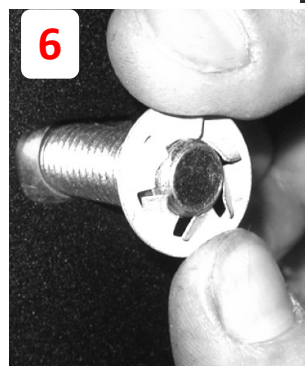
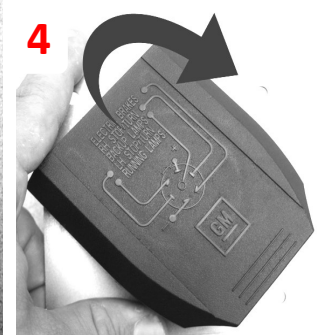
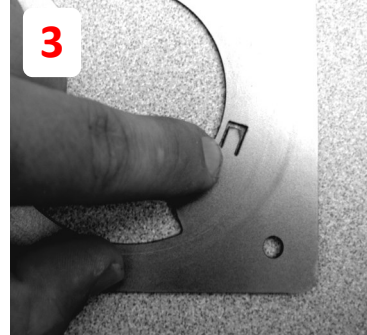
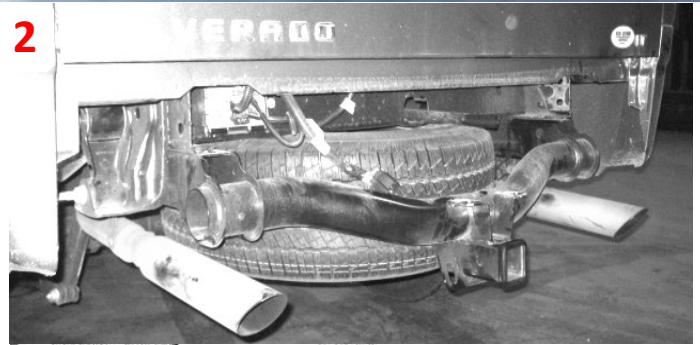
Metric and SAE Socket Sets and Wrenches

Tools to splice wiring

INCLUDED HARDWARE

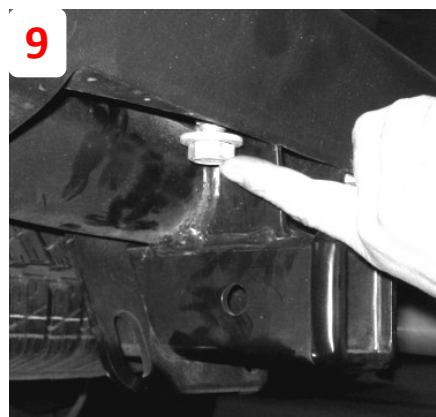
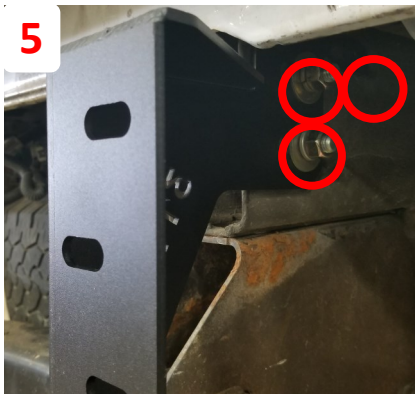
8	1/4"x3/4" Stainless steel button socket cap screw	2	3/8" Split Lock Washer
8	1/4" K-Lock nut	2	3/8" grade 5 nut
4	Nylon license plate nut	4	1 1/8" done plug
4	License plate screw	6	Retaining nut
4	#8-32 x3/4" socket screw		
4	*8-32 K-lock nut		
10	1.5" Single Bolt Tab (ZINC)		
10	1/2" Flat Washer		
10	1/2" Split Lock Washer		
10	1/2" Grade 8 nut		
2	3/8" Carriage Bolt		
2	3/8" flat washer		

- 1 Disconnect all sensors, trailer plug and license
- 2 Remove OEM Hardware and remove bumper
- 3 On the trailer plug mount, bend tab as shown
- 4 Install plug and turn clockwise until you feel it
- 5 Loosely fit brackets onto frame using supplied hardware (2) 1/2" bolt tabs and (1) 3/8" carriage bolt per side.
- 6 Install one bolt on each side of bumper using



Note It is a good idea to wrap the corner of the bumper to prevent scratching your paint.

Note Install lights, rear facing sensors, and other accessories while the bumper is off the truck for ease of installation.



7 Carefully mount the bumper on the brackets, and snug down hardware

8 While bumper is still loose adjust until it lines up right, then tighten down all of the hardware

9 If you have factory hitch there are cutouts to bolt the hitch to the bumper for support

10 Splice in the license plate lights into the factory harness and re-attach sensor harness if equipped.

