

INSTALL INSTRUCTIONS

VAQUERO FRONT BUMPER

Product Range : 315VFXX

Application : 2015 + CHEVROLET 2500,3500

I WARNING

Read the instructions completely before beginning installation. Before tightening bolts, drilling or cutting where required, check to make sure there are no obstructions such as brake, fuel or electrical lines which may be damaged. Also keep in mind this is an after-market product and MAY require minor shimming and/or trimming, reaming, etc. for proper fit. Road Armor is not responsible for any damages to vehicle.

ⓘ IMPORTANT NOTICE

- **** Vehicle will require purchase of additional GM Part # 23276812 (Park sensor housing) for proper re-installment of front center parking sensors. If equipped with parking monitor system. ****
- Be sure to inspect and test fit your product to ensure proper fitment before having it coated, painted, bed lined, etc.
- Road Armor will not be responsible for the cost of coating your unit if any problems with fit or finish are not noted and addressed beforehand.

SAFETY FIRST!

- FOLLOW ALL INSTRUCTIONS, YOUR SAFETY AND THE SAFETY OF OTHERS IS MOST IMPORTANT.
- WEAR APPROPRIATE EYE PROTECTION AND EXERCISE CAUTION WHEN DRILLING / CUTTING

REQUIRED TOOLS

SAE & Metric Sockets and Wrenches

Black Spray Paint

Adjustable Pliers

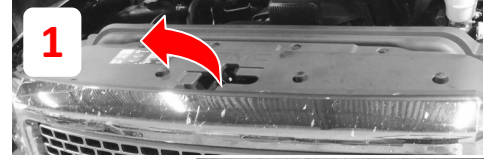
Tape Measure

INCLUDED HARDWARE

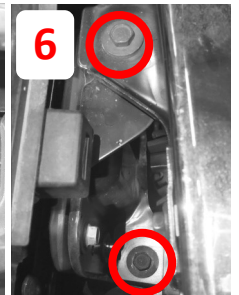
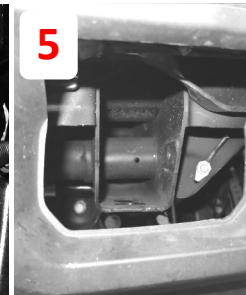
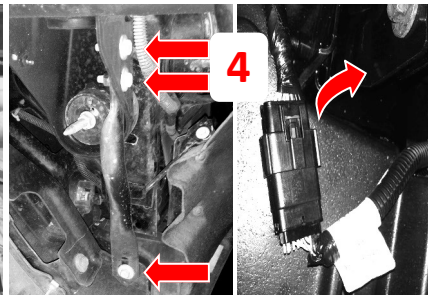
- 12 1.5" SINGLE BOLT TAB (ZINC)
- 12 1/2" Flat Washer
- 12 1/2" Split Lock Washer
- 12 1/2"-13 Grade 8 Hex Nut
- 4 1.093 Dome Plug
- 4 7/16" Bolt
- 8 7/16" Washers
- 4 7/16" Nuts



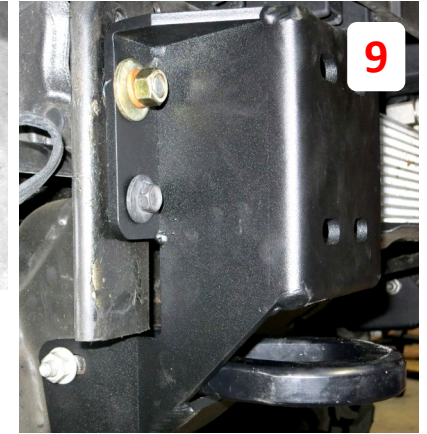
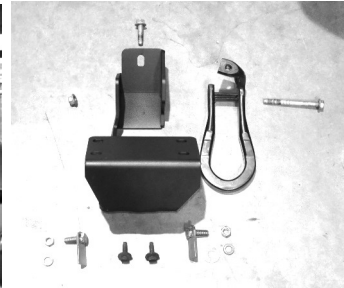
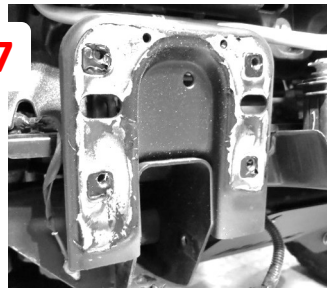
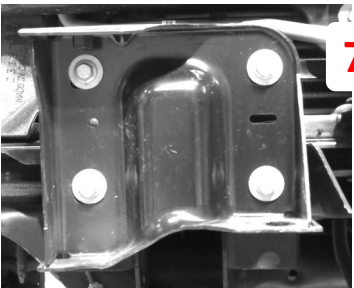
- 1 Open hood and remove dust cover above grill
- 2 Remove four bolts along top of grill
- 3 Pulling from the bottom, pop away the grill slowly



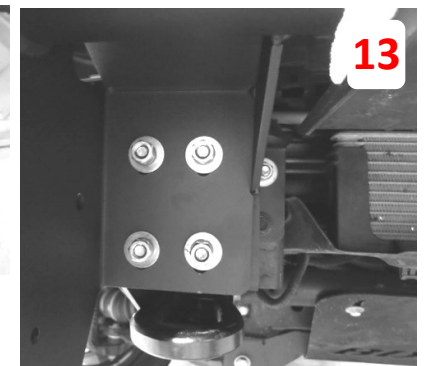
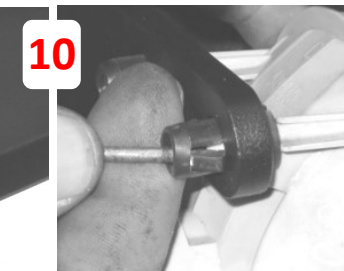
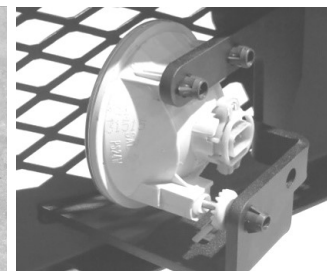
- 4 Remove stiffeners both sides and unplug harness
- 5 Remove tow hooks both sides
- 6 Remove bumper bolts 4 total and pull off bumper



- 7 Remove OEM bumper brackets and fit up Road Armor brackets through frame
- 8 You can now reinstall the grill and dust cover
- 9 Bolt on the frame brackets as shown using the OEM hardware to re-attach the tow hooks through brackets, re-use OEM bumper bolts in the bottom holes of the bracket face and bolt tabs through the top two holes.

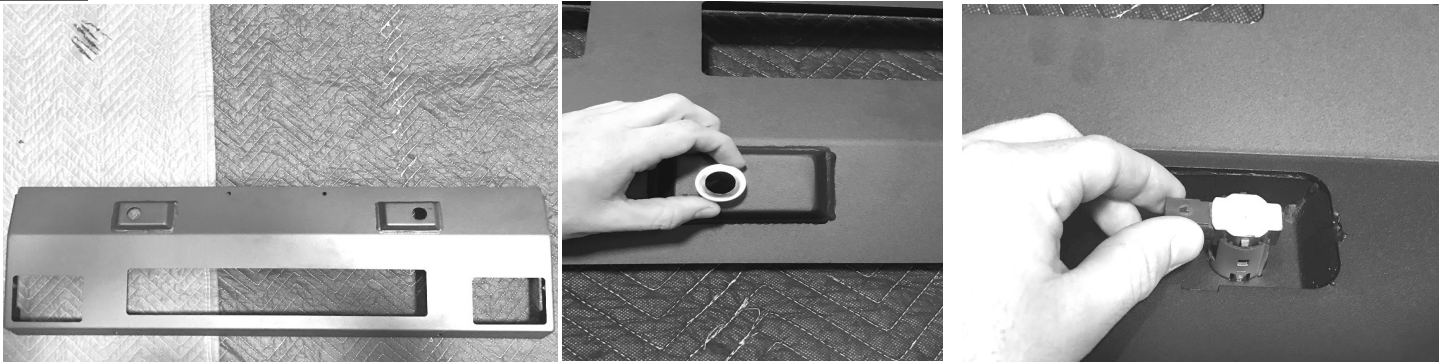


- 10 Remove factory fog lights and reinstall them as shown. Use a pick tool to pry out the tabs to affix light.
- 11 Alternatively you can install an LED cube light instead of fog lights.



- 12 Using a lift table, engine hoist or a couple friends, carefully line up the bumper with the brackets.
- 13 Insert bolt tabs through the bracket slots, then install a washer / lock washer and nut on bumper side.
- 14 Check in/out and side to side adjustments as well as headlight reveal.
- 15 Once you are satisfied with fitment, fully tighten bumper to brackets.

- 16** Install GM Part # 23276812 (Park Sensor Housing) by pushing housing into non-winch center plate. Continue by installing factory parking sensors into each sensor housing.



- 17** The center section is designed to accommodate a 20-inch light bar. If you have one to install do this now.

- 18** Now install the modular non-winch center plate. It slides up from the bottom and bolts through the sides as shown.



DONE

