

INSTALL INSTRUCTIONS

Ram 1500 Rear Spartan Bumper

Product : 4131XR

Application : 2009-18 Ram 1500

I WARNING

Read the instructions completely before beginning installation. Before tightening bolts, drilling or cutting where required, check to make sure there are no obstructions such as brake, fuel or electrical lines which may be damaged. Also keep in mind this is an after-market product and MAY require minor shimming and/or trimming, reaming, etc. for proper fit. Road Armor is not responsible for any damages to vehicle.

ⓘ IMPORTANT NOTICE

- Be sure to inspect and test fit your product to ensure proper fitment before having it coated, painted, bed lined, etc.
- Road Armor will not be responsible for the cost of coating your unit if any problems with fit or finish are not

SAFETY FIRST!

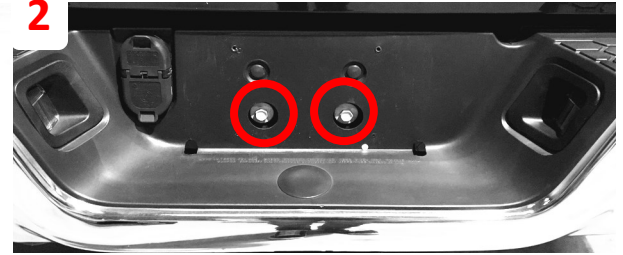
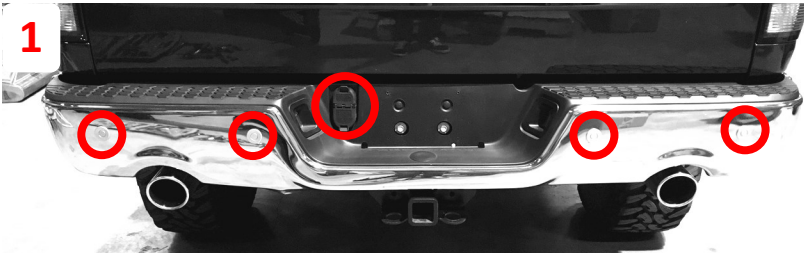
- FOLLOW ALL INSTRUCTIONS, YOUR SAFETY AND THE SAFETY OF OTHERS IS MOST IMPORTANT.
- WEAR APPROPRIATE EYE PROTECTION AND EXERCISE CAUTION WHEN DRILLING / CUTTING

INCLUDED HARDWARE

- 6 1/2"-13 x 1-1/2" Grade 8 Cap Screw
- 16 1/2" x 1.375" General Purpose Flat Washer
- 10 1/2" Split Lock Washer
- 8 1/2"-13 grade 8 hex nut
- 4 1.5" single bolt tab
- 8 1/4"-20 x 3/4" ASTM F879 Hex Drive Grade 18-8 Stainless Steel Button Socket Cap Screw
- 4 8-32 x 3/4" Grade 8 flat socket cap screw
- 4 8-32 Lock Nut
- 1 License Plate Hardware Kit
- 8 1/4" K-lock nut
- 4 #10-24 x 3/4" ASTM F879 Hex Drive Grade 18-8 Stainless Steel Button Socket Cap Screw
- 4 #10-24 Zinc Finish Steel with External Tooth Lock washer K-Lock Nut
- 4 1 1/8" Dome Plug
- 2 License plate light
- 4 1/2" push nut bolt retainer

1 Unplug the trailer connector, license plate lights, and the back up sensors if equipped

2 Remove the two bolts from the center of the bumper



3 Remove the two bolts on the backside of each side of the bumper

4 Remove the bumper

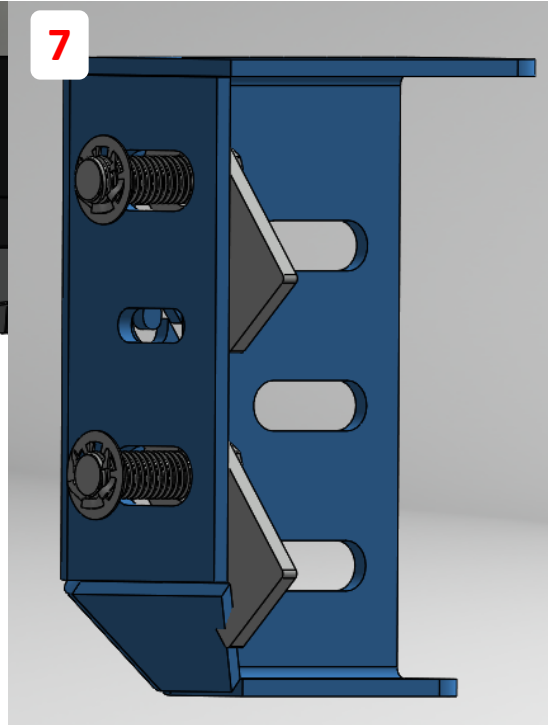
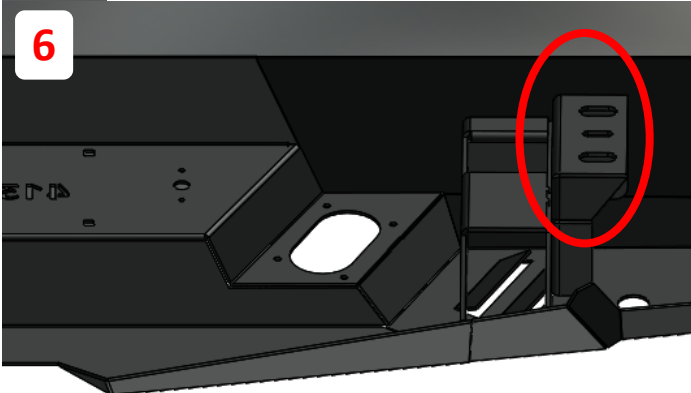
5 Install backup sensors, trailer hookup, and lighting options into bumper.

6 Secure brackets to bumper using 1/2" standard hex bolts (3 per side).

7 Insert the 1/2" bolt tabs into the bracket and secure using the retaining nut.

Cut the license plate light bulbs off the harness and strip the end of the wires.

8 (The wires are attached to the frame with plastic rivets. One on each side will have to be removed from the frame for the wires to reach)



- 9 Mount your new bumper onto truck using supplied hardware.
- 10 Adjust the bumper left/right and tighten the fasteners connecting the bracket to the frame.
- 11 Adjust the bumper up/down and in/out and tighten the fasteners connecting the brackets to the bumper.
- 12 Pull the license plate light wire through the center holes for the license plate light holes. Connect the aftermarket license plate lights to the stripped wires from the stock license plate light wires.
(Polarity of the wires does not matter)
- 13 Now secure the aftermarket license plate lights to the bumper using the 8-32 hardware.



Note Block Off Plates for Lights Sold Serperately

Finished