

WINCH



NON-WINCH



INSTALL INSTRUCTIONS

Stealth Front Bumper

Product : 4192FXB

Application : 2019+ Dodge Ram 2500,3500 & 5500

I WARNING

Read the instructions completely before beginning installation. Before tightening bolts, drilling or cutting where required, check to make sure there are no obstructions such as brake, fuel or electrical lines which may be damaged. Also keep in mind this is an after-market product and MAY require minor shimming and/or trimming, reaming, etc. for proper fit. Road Armor is not responsible for any damages to vehicle.

ⓘ IMPORTANT NOTICE

- Be sure to inspect and test fit your product to ensure proper fitment before having it coated, painted, bed lined, etc.
- Road Armor will not be responsible for the cost of coating your unit if any problems with fit or finish are not

SAFETY FIRST!

- FOLLOW ALL INSTRUCTIONS, YOUR SAFETY AND THE SAFETY OF OTHERS IS MOST IMPORTANT.
- WEAR APPROPRIATE EYE PROTECTION AND EXERCISE CAUTION WHEN DRILLING / CUTTING

REQUIRED TOOLS

SAE & METRIC Socket set and wrenches

Screw drivers, pry tool, pick tool, pliers

RECOMMENDED TOOLS

Adjustable Table Cart / Table/Pallet Lift or Hoist

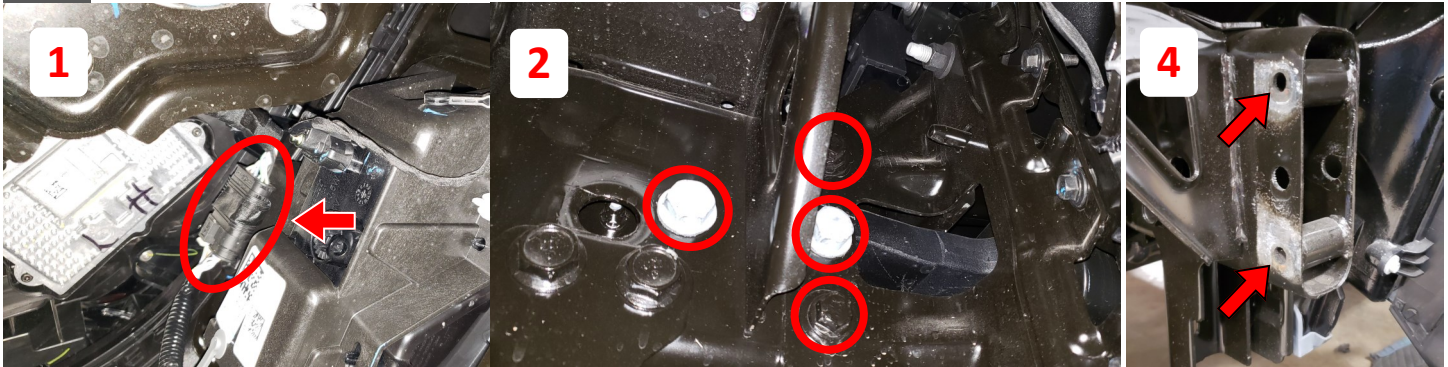
Impact driver

INCLUDED HARDWARE

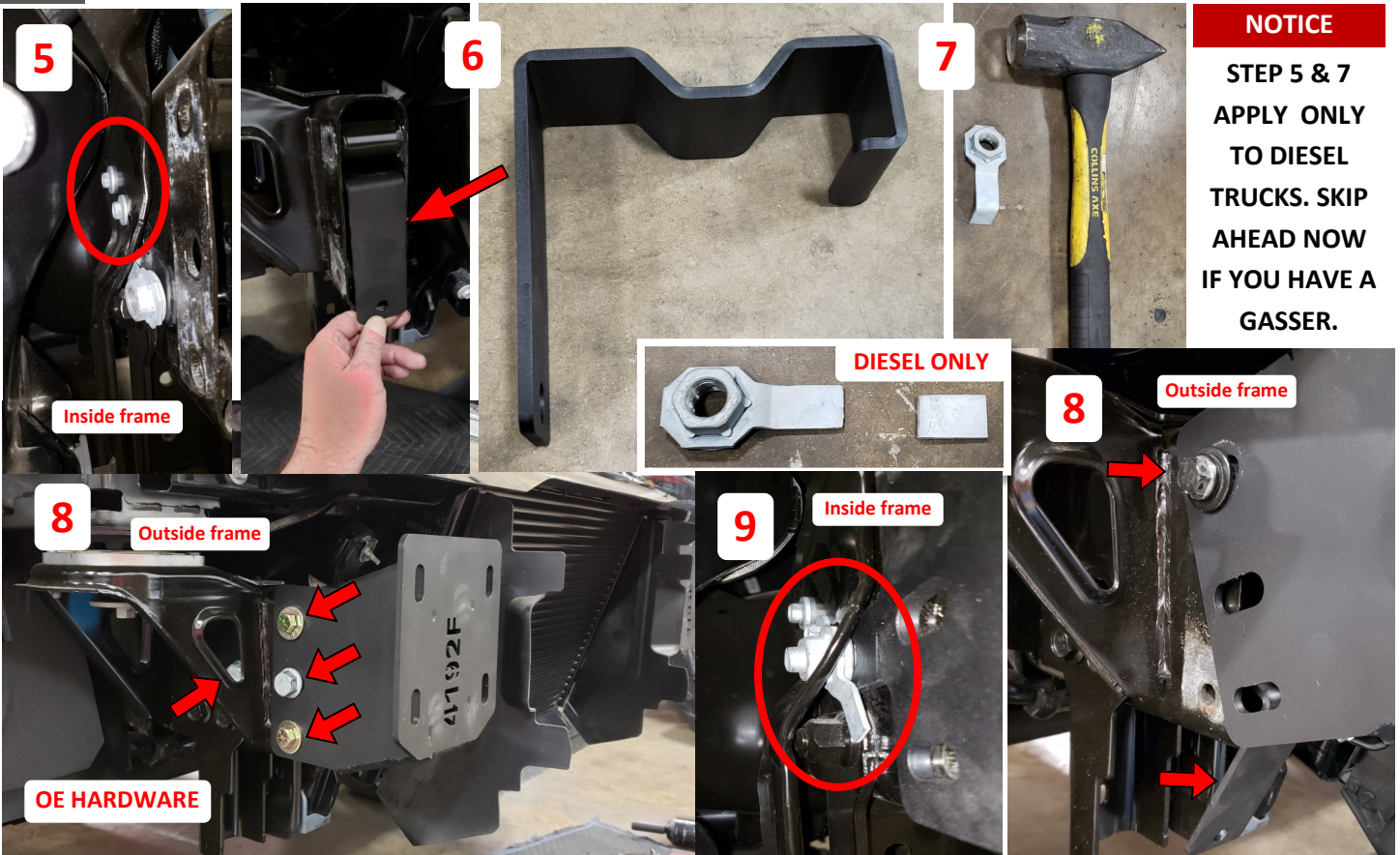
- 2 Retainer Washers / Clips
- 8 Single Bolt Tabs
- 16 1/2" Flat Washers
- 12 1/2" Split Lock Washers
- 12 1/2"-13 Grade 8 Hex Nuts
- 1 Winch Bolt Kit
- 4 #10 Stainless Bolts and Nuts
- 4 1/2" - 4" Bolt Grade- 8
- 1 Stainless Steel Road Armor Logo
- 2 Brackets
- 6 Dome Plugs & Sensor Grommets



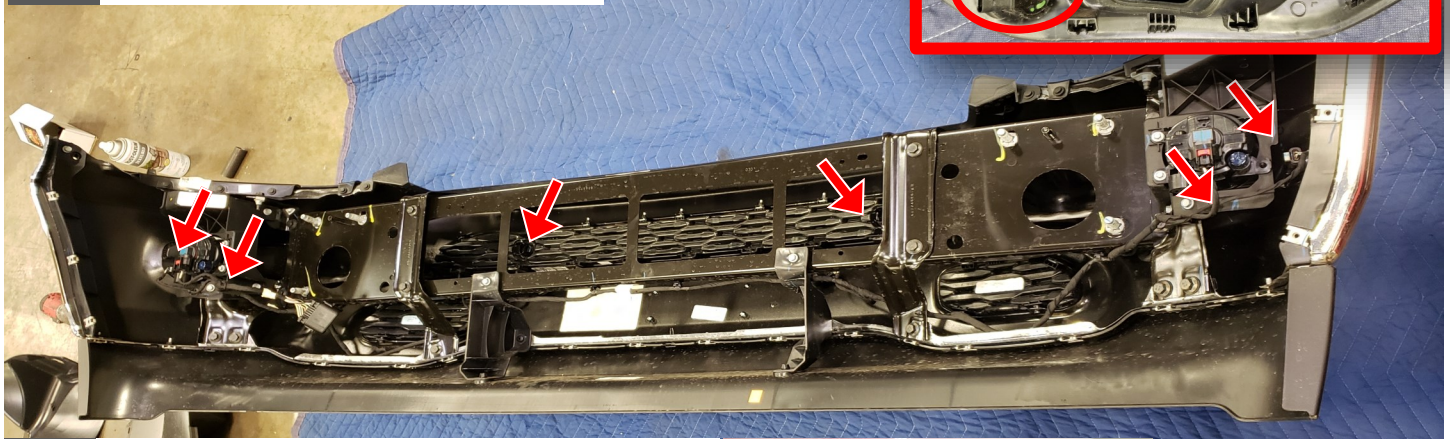
- 1 Disconnect bumper harness plug, located near driver side fog light housing.
- 2 Remove OE tow hook & bumper bracket bolts as shown.
- 3 Remove tow hooks followed by front bumper.
- 4 Drill top and bottom frame holes to 1/2" to accommodate new hardware.



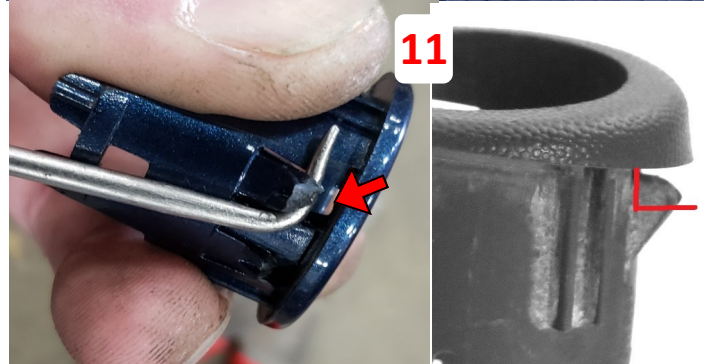
- 5 Loosen two bolt securing each intercooler bracket to inside of frame. (Do not remove from frame)
- 6 Loosely install frame crush brackets followed by large tow hook bolts through frame end . (Hook end first)
- 7 Using large hammer, break off 90 deg. tab off of both rear tow hook bolt tabs.
- 8 Install each frame bracket using 1/2"x 4 bolts, washers & nuts; followed by remaining two hook bolts.
- 9 Install modified tow hook bolt tab on rear tow hook bolt (Between frame bracket and intercooler bracket.)



10 *If equipped* Remove all factory sensors, housings & harness from OE bumper. *Track location for install*



11 Trim 1/16" off sensor housing for proper fit onto bumper. Zip tie can be used on backside to secure each sensor assembly to bumper for additional security.



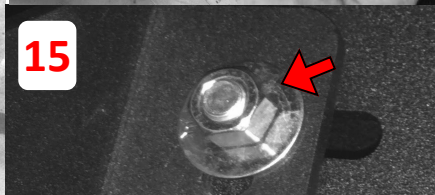
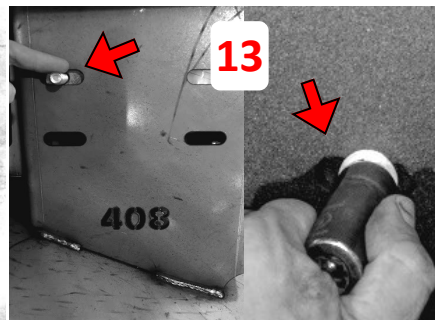
12 *DIESEL* Must reinstall intercooler air dam (if equipped) (over heating may occur.)

13 Insert the Single Bolt Tab through outside top slot as indicated, then affix to the bumper side bracket using a retainer clip. Then do the same with the Single Bolt Tab on the opposite side.

14 **Install/Secure all sensors, lighting & winch at this time.**

15 Install bumper to frame brackets aligning the retained bolts with bracket slots; secure using supplied 1/2" washers, lock washers and nuts. *3/8" gap between bumper and grille recommended*

16 Once centered and satisfied with fitment tighten everything down, *including frame & intercooler bracket. *Trim inner fender liner to fit bumper profile & Install Road Armor logo with hardware provided. *



FINISHED