



2007-2013 CHEVROLET 1500 FRONT BUMPER

Suggested Torque Values For Steel Grade 5 Standard Bolts		
BOLT DIAMETER (INCH)	THREADS PER INCH	TORQUE (POUND - FEET)
1/4	20	7
5/16	18	14
3/8	16	25
7/16	14	40
1/2	13	60
9/16	12	88
5/8	11	120
3/4	10	200
7/8	9	302
1	8	466

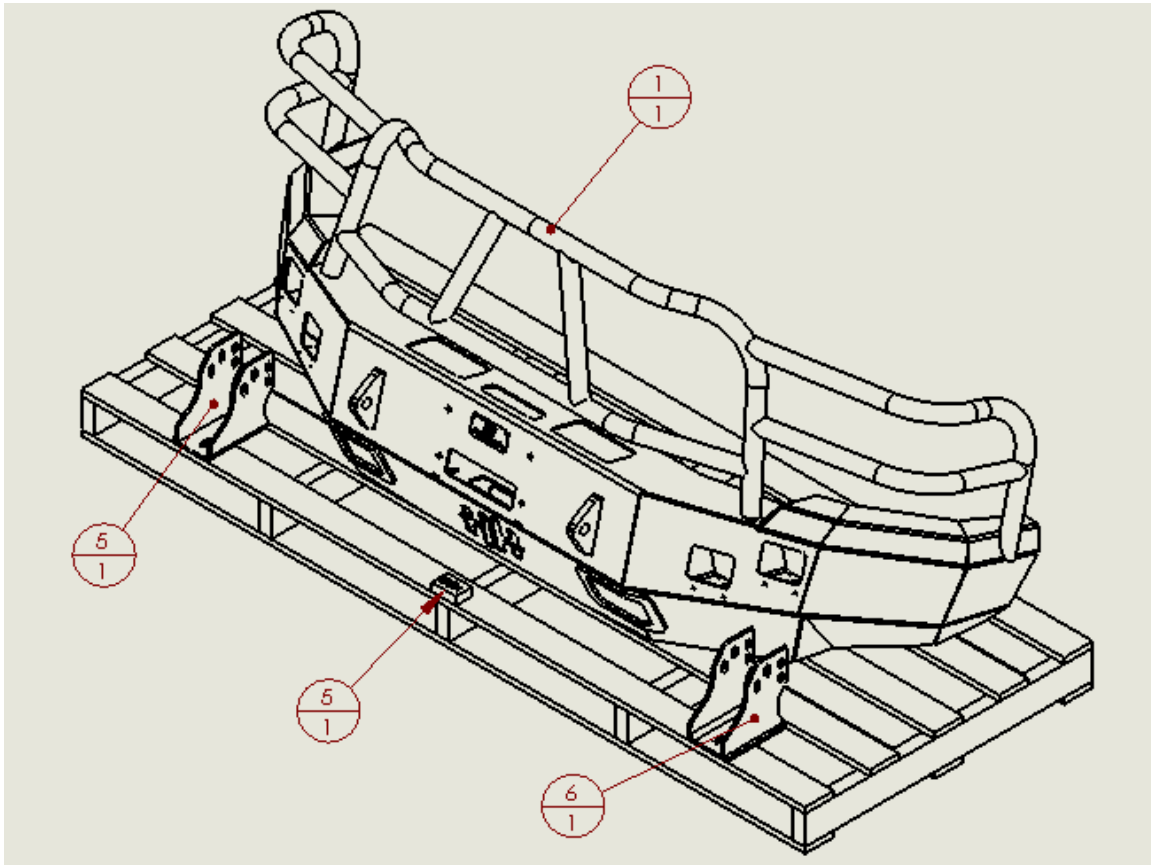
Suggested Torque Values For Steel Grade 8.8 Metric Bolts		
BOLT DIAMETER (mm)	THREAD PITCH (mm)	TORQUE (POUND-FEET)
6	1.0	7
8	1.25	16
10	1.5	32
12	1.75	55
14	2.0	88
16	2.0	140
18	2.5	195
20	2.5	275
22	2.5	375
24	3.0	475

I. PARTS LIST

ITEM NO.	QTY.	PART NUMBER	DESCRIPTION
1	1	60A-56-0054	600-56-0054 ASSEMBLED
5	1	601-56-0797	PASS FRAME MOUNT WELDMENT
6	1	601-56-0798	DRIVER FRAME MOUNT WELDMENT
5	1	60K-56-0001	HARDWARE KIT #1



2007-2013 CHEVROLET 1500 FRONT BUMPER



II. TOOL LIST

1. 15mm socket
2. 21mm socket
3. 18mm socket
4. 18mm wrench
5. 3/4" socket
6. 3/4" wrench

III. REMOVAL OF OEM BUMPER

1. Underneath of vehicle remove 9 dart clips holding rubber shroud to vehicle. See figure 1.



2007-2013 CHEVROLET 1500 FRONT BUMPER

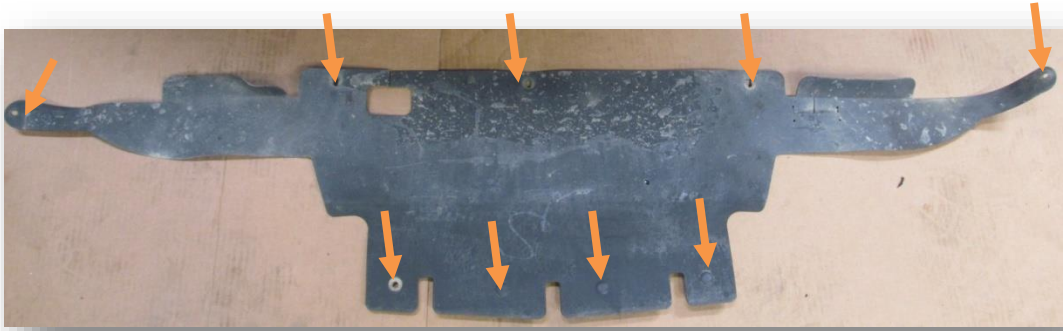


Figure 1

2. Using 15mm socket remove three bolts holding outer brace from frame to bumper. Two are bolting outer brace to frame of vehicle and a third bolt is mounting outer brace to the inside of the bumper. See figure 2 and figure 3.(Both sides)

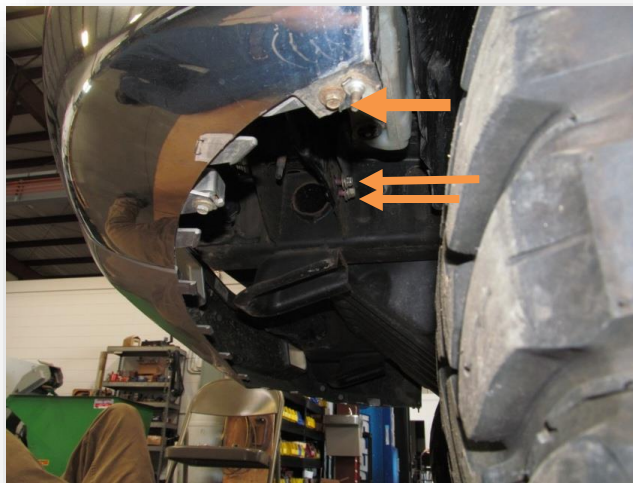


Figure 2





2007-2013 CHEVROLET 1500 FRONT BUMPER

Figure 3

3. Using a 21mm socket remove two nuts from the bolt strip holding the bumper to the frame of vehicle. (Both sides) See figure 4.

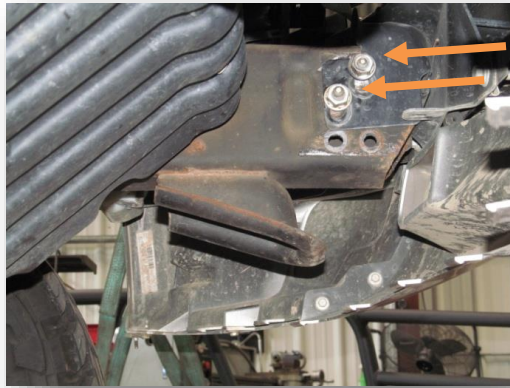


Figure 4

4. Remove bolt strip from vehicle (Both sides).See Figure 5.



Figure 5

5. Carefully remove OEM bumper and set aside. See Figure 6.





2007-2013 CHEVROLET 1500 FRONT BUMPER

Figure 6

6. Using 18mm socket and wrench remove the single bolt holding on the OEM tow hook (both sides). See Figure 7.



Figure 7

7. Remove OEM tow hooks. See Figure 8.



Figure 8



2007-2013 CHEVROLET 1500 FRONT BUMPER

IV. INSTALLATION OF HAMMERHEAD BUMPER

1. Align frame mounts to vehicle. See figure 9, figure 10, and figure 11. Use bolt strip and tow hook bolt to hold frame mount in place.



Figure 9: front view of driver side mount.



Figure 10: Outside side view of driver side frame mount



2007-2013 CHEVROLET 1500 FRONT BUMPER



Figure 11: Inside side view of driver side frame mount

2. Using 21mm socket tighten bolt strip nuts to frame mount.

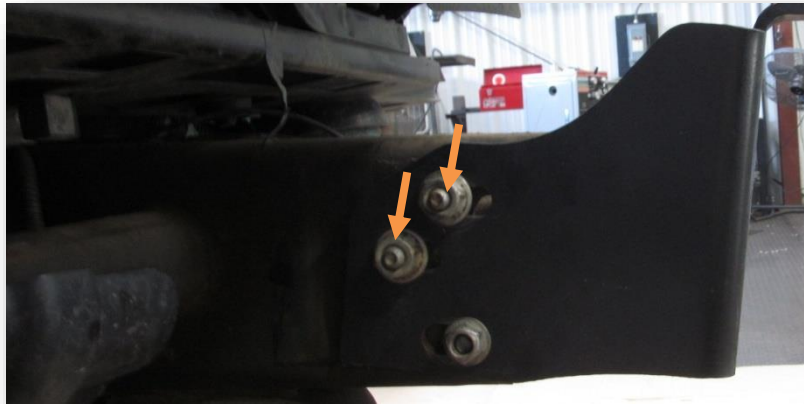
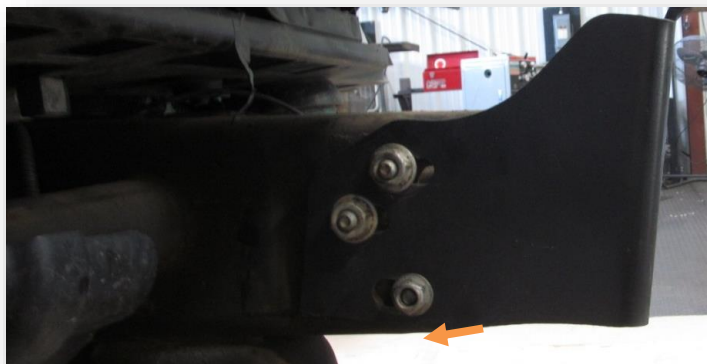


Figure 12

3. Using an 18 mm socket and 18mm wrench tighten tow hook bolt and nut. See Figure 13.





2007-2013 CHEVROLET 1500 FRONT BUMPER

Figure 13

4. Align Hammerhead bumper to frame mounts.
5. Using Hardware Kit #4 with a $\frac{3}{4}$ " socket and wrench tighten HammerHead bumper to frame mounts. (Two bolts per side). See Figure 14.

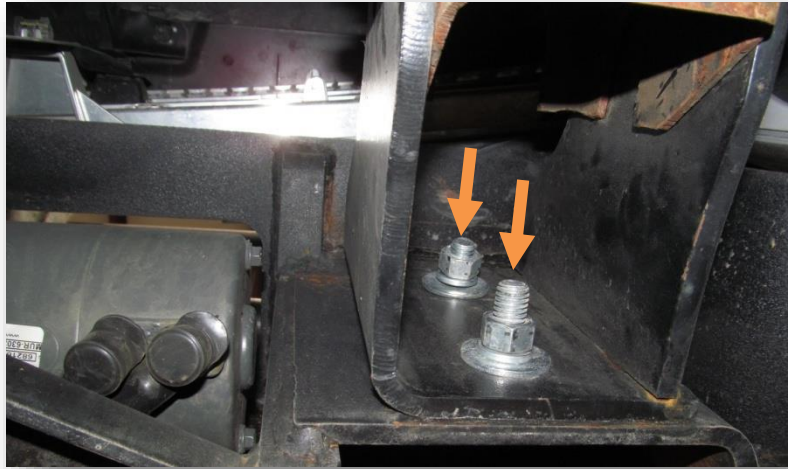


Figure 14

Congratulations!

