

2004-20XX Nissan Titan

REAR BUMPER INSTALLATION INSTRUCTIONS



SAFETY

Know safety, no injury. Know injury, no safety. ~Author Unknown

- **READ ALL SAFETY INSTRUCTIONS BEFORE INSTALLATION**
 - FOLLOW ALL INSTRUCTIONS FOR PROPER ASSEMBLY
 - WEAR APPROPRIATE EYE PROTECTION
 - EXERCISE CARE WHEN LIFTING COMPONENTS
 - USE APPROPRIATE TORQUE FOR BOLTS
 - BLUE THREAD LOCKING COMPOUND IS RECOMMENDED ON ALL BOLT

 - SUGGESTED TORQUE VALUES FOR STEEL GRADE SAE 5 BOLT

| BOLT DIAMETER (INCH) | TREADS PER INCH | TORQUE (POUND-FEET) |
|----------------------|-----------------|---------------------|
| 1/4 | 20 | 7 |
| 5/16 | 18 | 14 |
| 3/8 | 16 | 25 |
| 7/16 | 14 | 40 |
| 1/2 | 13 | 60 |
| 9/16 | 12 | 88 |
| 5/8 | 11 | 120 |
| 3/4 | 10 | 200 |
| 7/8 | 9 | 302 |
| 1 | 8 | 466 |



2004-20XX Nissan Titan Rear Bumper

I. PARTS LIST

| <u>QUANTITY</u> | <u>PART NUMBER</u> | <u>DESCRIPTION</u> |
|-----------------|--------------------|-------------------------------------|
| 1 | 600-56-0095 | 2004-20XX NISSAN TITAN RPS BUMPER |
| 1 | 60P-56-1778 | PAINTED PASS FRAME MOUNT WELDMENT |
| 1 | 60P-56-1777 | PAINTED DRIVER FRAME MOUNT WELDMENT |
| 1 | 60K-56-0001 | HARDWARE PACKAGE #1 |
| 1 | 443-01-0086 | LICENSE PLATE MOUNTIN KIT |
| 2 | 307-13-0115 | 4" WHITE ROUND BU LIGHT |
| 2 | 307-13-0148 | GROMMET FOR 4" RD SEALED LIGHT |
| 4 | 307-13-0231 | PARK ASSIST SENSOR GROMMET |

II. TOOL LIST

- 1) 17mm socket
- 2) 3/4" wrench
- 3) 3/4" socket



2004-20XX Nissan Titan Rear Bumper

III. REMOVAL OF OEM BUMPER

1. Lower the spare tire per owner's manual. See Figure 1.



Figure 1

2. Remove wiring harness on driver side connecting tag lights and rear park assist sensors. See Figure 1b



Figure 1b



2004-20XX Nissan Titan Rear Bumper

3. Using 17mm socket remove three bolts holding bumper bracket to frame (Both Sides).
See Figure 2.



Figure 2.

4. Carefully remove OEM rear bumper. See Figure 3.



Figure 3



2004-20XX Nissan Titan Rear Bumper

5. From OEM bumper remove all sensor wires and sensors. See Figure 3b



Figure 3b

6. Remove OEM license plate light harness and lights from OEM bumper.



2004-20XX Nissan Titan Rear Bumper

IV. INSTALLATION OF HAMMERHEAD BUMPER

1. Install Frame mounts to INSIDE of frame. See Figure 4.

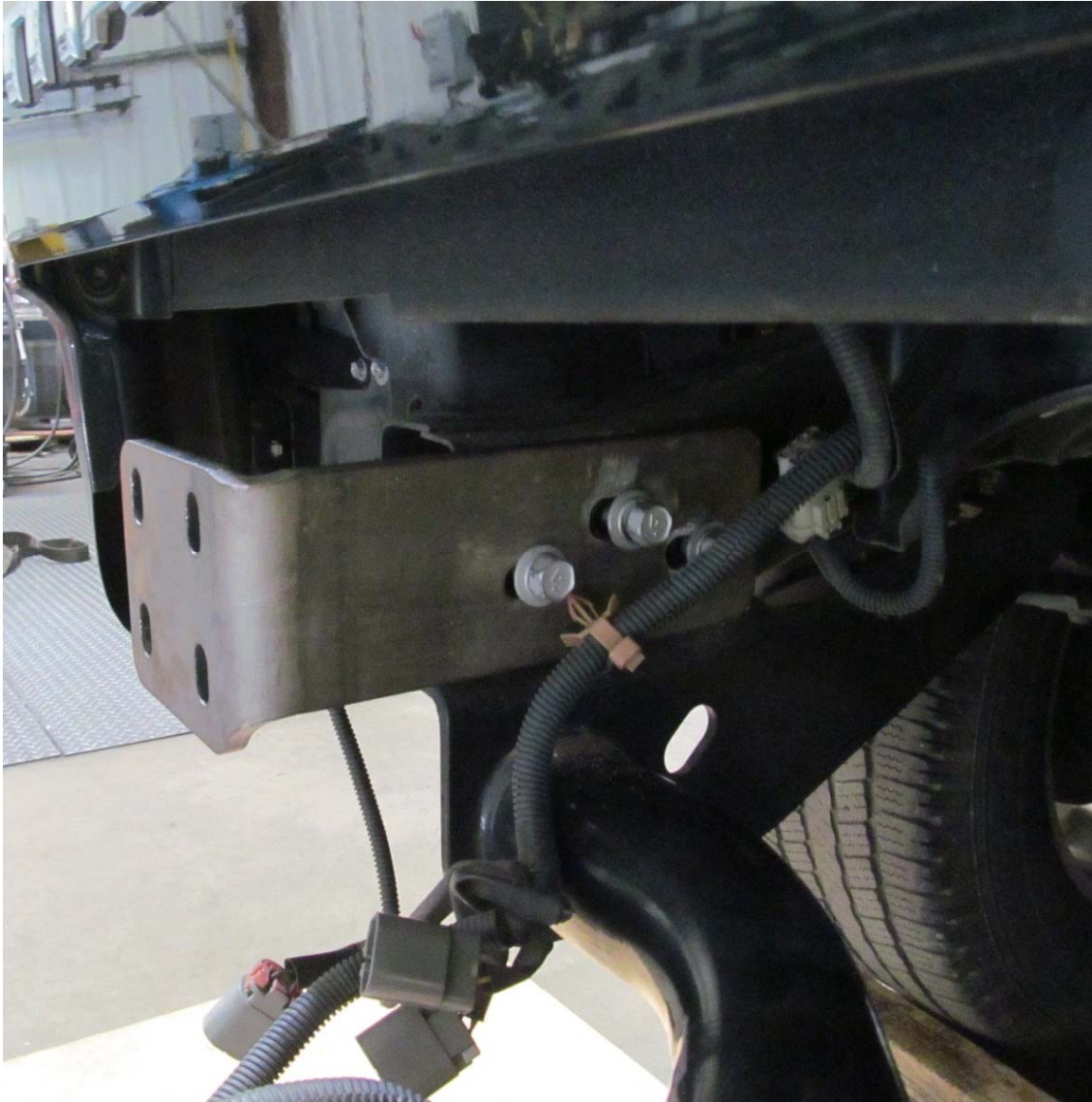


Figure 4.



2004-20XX Nissan Titan Rear Bumper

2. Using 17mm Tighten OEM bolts into frame mount (Both Sides). See Figure 5.

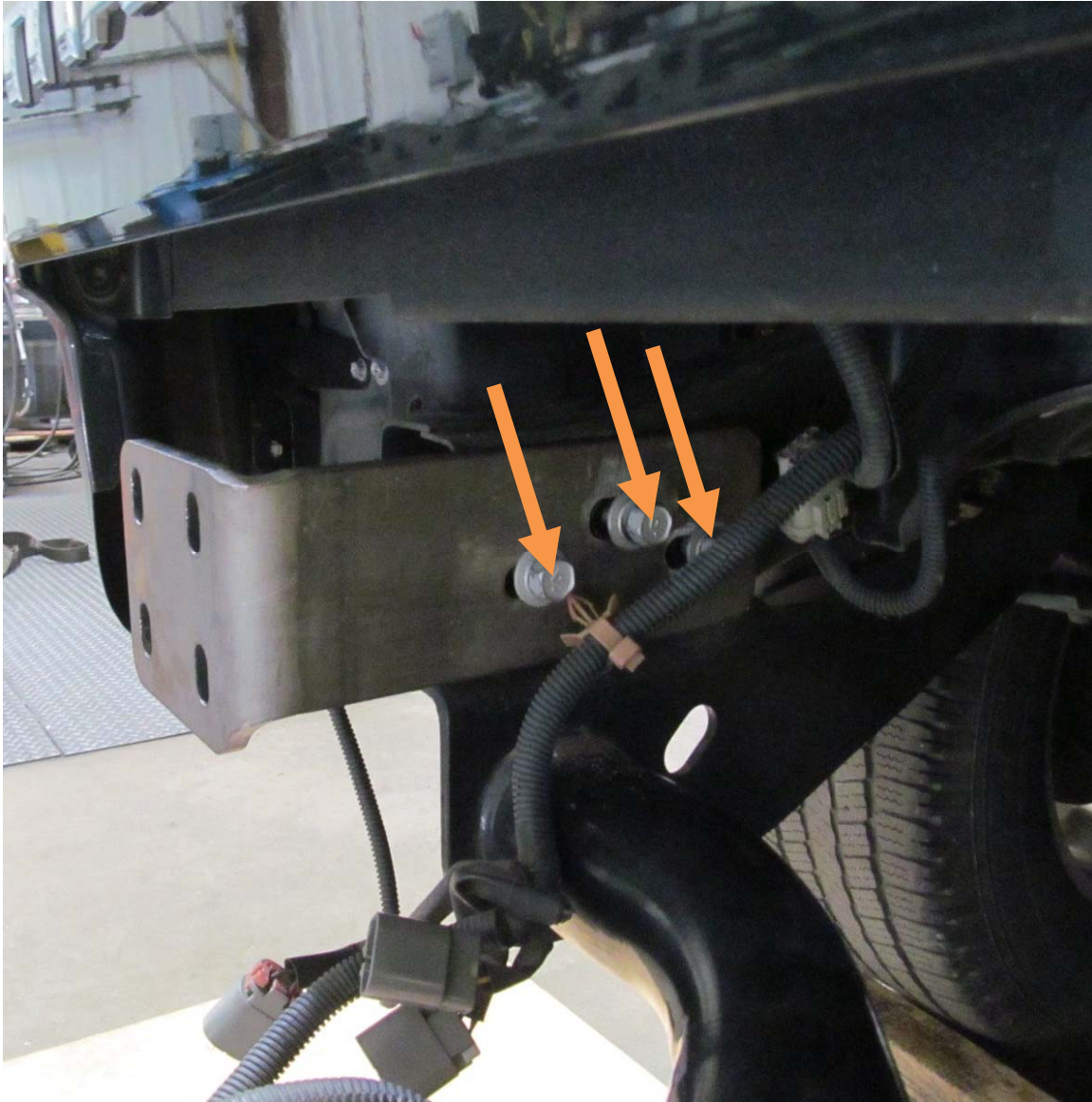


Figure 5



2004-20XX Nissan Titan Rear Bumper

3. Install rear park assist sensors into HammerHead bumper

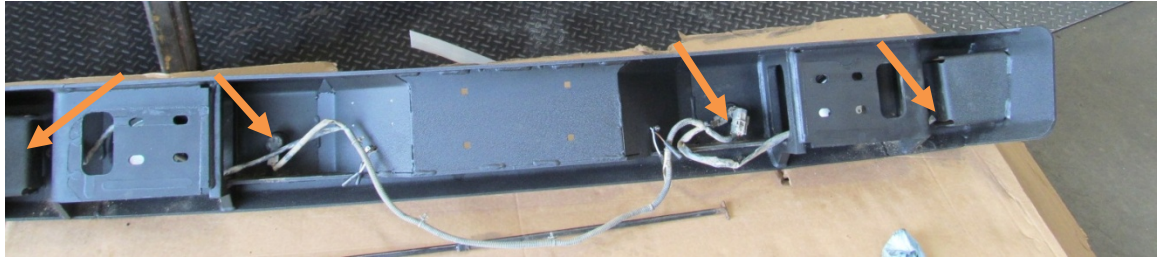


Figure 6

4. Ensure all sensors are positioned similar to Figure 7.



Figure 7.

5. Align bumper to vehicle.
6. Using Hardware Kit # 1 secure bumper to vehicle.(8 bolts)
7. Install OEM license plate lights.
8. Tighten all fasteners to specification.
9. Raise the spare tire per instructions in owner's manual.



2004-20XX Nissan Titan Rear Bumper

CONGRATULATIONS!

