

2009-20XX FORD F150

2010-20XX FORD RAPTOR

FRONT BUMPER INSTALLATION INSTRUCTIONS



SAFETY

Know safety, no injury. Know injury, no safety. ~Author Unknown

If there are any questions, call 1-855-HHTOUGH

- **READ ALL SAFETY INSTRUCTIONS BEFORE INSTALLATION**
 - FOLLOW ALL INSTRUCTIONS FOR PROPER ASSEMBLY
 - WEAR APPROPRIATE EYE PROTECTION
 - EXERCISE CARE WHEN LIFTING COMPONENTS
 - USE APPROPRIATE TORQUE FOR BOLTS
 - BLUE THREAD LOCKING COMPOUND IS RECOMMENDED ON ALL BOLT
 - SUGGESTED TORQUE VALUES FOR STEEL GRADE SAE 5 BOLT

BOLT DIAMETER (INCH)	TREADS PER INCH	TORQUE (POUND-FEET)
1/4	20	7
5/16	18	14
3/8	16	25
7/16	14	40
1/2	13	60
9/16	12	88
5/8	11	120
3/4	10	200
7/8	9	302
1	8	466



2009-20XX FORD F150 OR 2010-20XX FORD RAPTOR

<u>QUANTITY</u>	<u>PART NUMBER</u>	<u>DESCRIPTION</u>
1	600-56-0061 600-56-0128 600-56-0090	2009-20XX FORD F150
1	60P-56-1678	PAINTED PASS FRAME MOUNT WELDMENT
1	60P-56-1674	PAINTED DRIVER FRAME MOUNT WELDMENT
1	60P-56-1541	PAINTED WINCH TRAY
1	60K-56-0001	HARDWARE PACKAGE #1

I. TOOL LIST

1. 10mm Socket
2. Needle nose pliers
3. 21mm Socket
4. 15mm Socket

II. REMOVAL OF OEM BUMPER

1. Disconnect OEM fog lights and secure wires out of the way.



Figure 1



2009-20XX FORD F150 OR 2010-20XX FORD RAPTOR

- Using a 10mm Socket remove two bolts from plastic Valance. See figure 2 and figure 3.

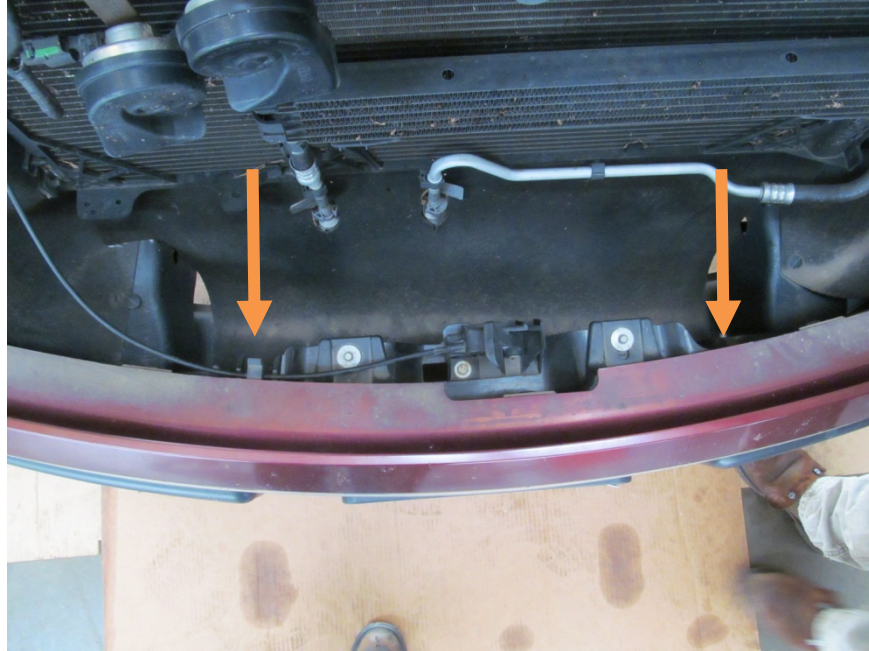


Figure 2



Figure 3



2009-20XX FORD F150 OR 2010-20XX FORD RAPTOR

3. Remove three plastic Christmas tree clips holding on dust shroud and push shroud out of way. See Figure 4 and Figure 5.

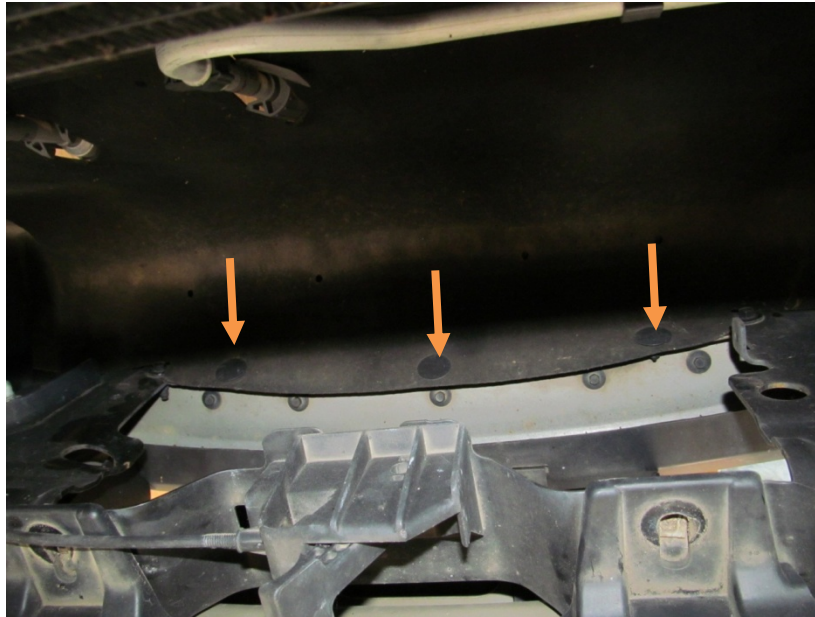


Figure 4



Figure 5



2009-20XX FORD F150 OR 2010-20XX FORD RAPTOR

4. Use a 21mm socket remove four nuts (2 per side) holding OEM bumper to frame of vehicle. See Figure 6.



Figure 6

5. Remove OEM bumper from vehicle and set aside. See Figure 7 and Figure 8.



Figure 7



2009-20XX FORD F150 OR 2010-20XX FORD RAPTOR



Figure 8.

6. Using a 15mm socket remove tow hook bolts (both sides)
7. Remove OEM tow hooks.

III. INSTALLATION OF HAMMERHEAD BUMPER

1. Align frame mounts to vehicle. See Figure 9, Figure 10 and Figure 11.



Figure 9



2009-20XX FORD F150 OR 2010-20XX FORD RAPTOR



Figure 10: Driver side view of mounts

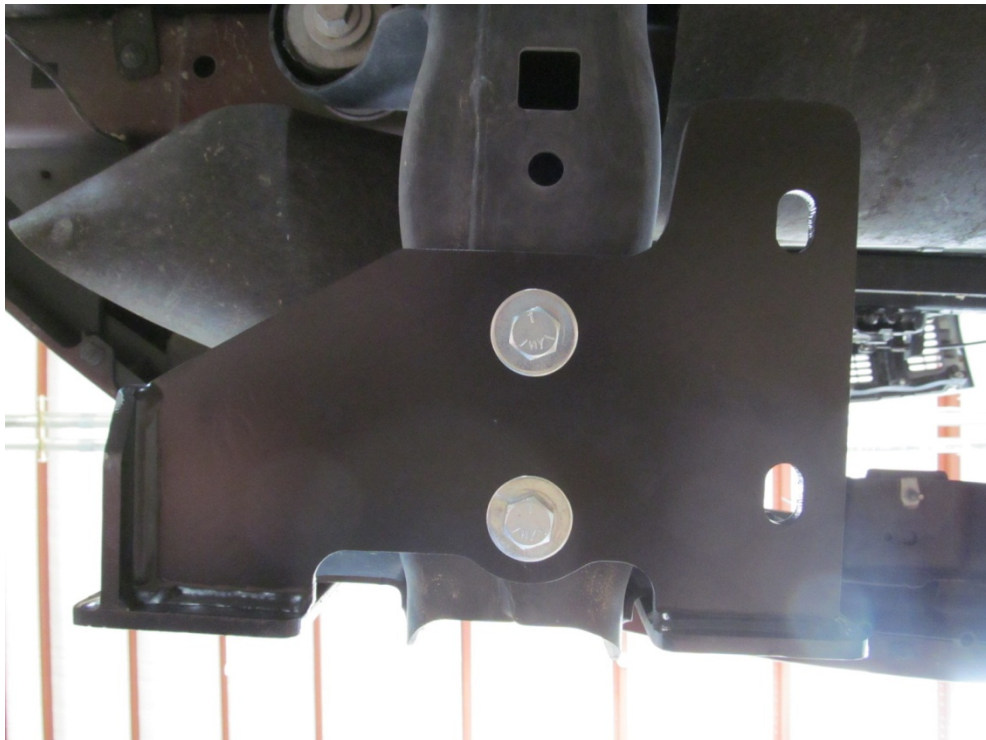


Figure 11



2009-20XX FORD F150 OR 2010-20XX FORD RAPTOR

2. Hand tighten OEM tow hook bolts into the bottom of the frame mounts into the frame.
3. Insert winch tray onto frame mounts. See Figure 12.



Figure 12

4. Using a $\frac{3}{4}$ " wrench and socket tighten four bolts(two both sides) through frame mounts into winch tray. Provided in hardware kit #1. See Figure 13.

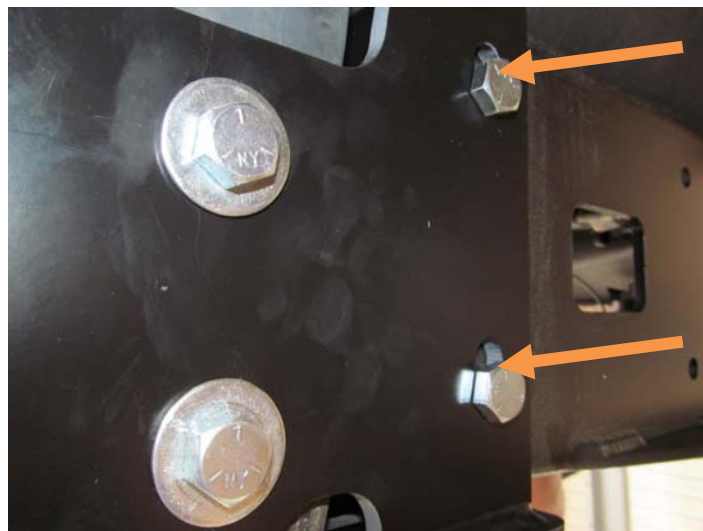


Figure 13



2009-20XX FORD F150 OR 2010-20XX FORD RAPTOR

5. Align bumper a minimum of $\frac{1}{4}$ " below headlights. When truck flexes off-road, this distance allows your bumper and body to have clearance.
6. Using $\frac{3}{4}$ " socket and wrench tighten two bolts (each side) through frame mounts into Hammerhead bumper.



Congratulations! Your bumper installation is now complete.
Thank you for your purchase.