

2013-20XX DODGE 1500

FRONT BUMPER INSTALLATION INSTRUCTIONS



SAFETY

Know safety, no injury. Know injury, no safety. ~Author Unknown

If there are any questions, call 1-855-HHTOUGH

- **READ ALL SAFETY INSTRUCTIONS BEFORE INSTALLATION**
 - FOLLOW ALL INSTRUCTIONS FOR PROPER ASSEMBLY
 - WEAR APPROPRIATE EYE PROTECTION
 - EXERCISE CARE WHEN LIFTING COMPONENTS
 - USE APPROPRIATE TORQUE FOR BOLTS
 - BLUE THREAD LOCKING COMPOUND IS RECOMMENDED ON ALL BOLT

California Proposition 65



WARNING

Cancer and Reproductive Harm

www.P65Warnings.ca.gov

DO NOT PAINT OVER THIS LABEL. REPLACE IF DAMAGED OR LOST

DKB150_00



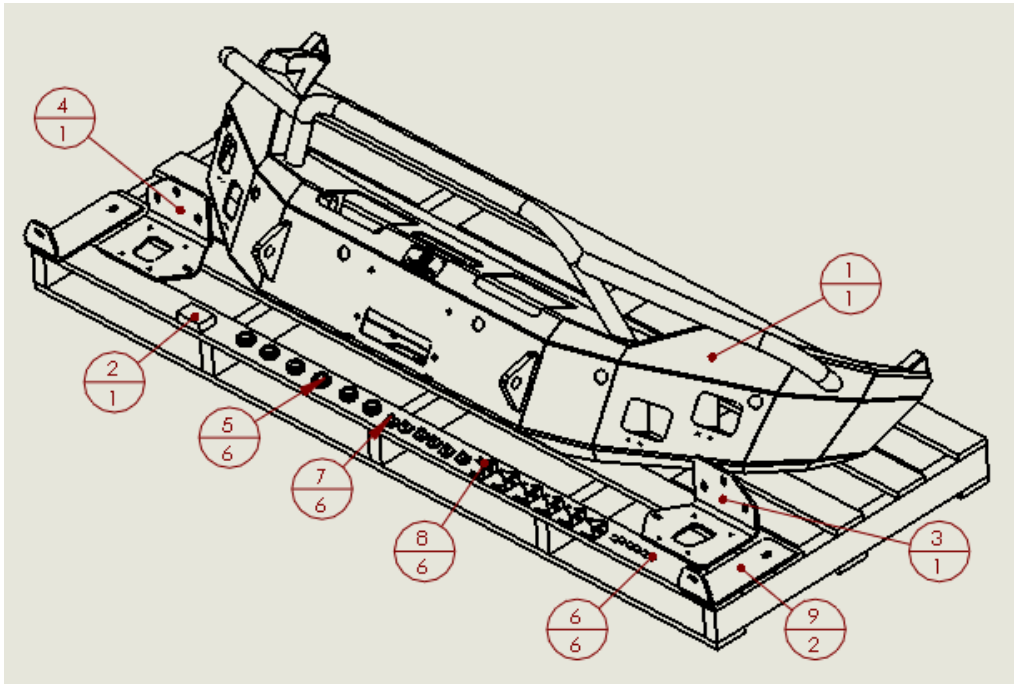
2013-20XX DODGE 1500 FRONT BUMPER

Suggested Torque Values For Steel Grade 5 Standard Bolts		
BOLT DIAMETER (INCH)	THREADS PER INCH	TORQUE (POUND - FEET)
1/4	20	7
5/16	18	14
3/8	16	25
7/16	14	40
1/2	13	60
9/16	12	88
5/8	11	120
3/4	10	200
7/8	9	302
1	8	466

Suggested Torque Values For Steel Grade 8.8 Metric Bolts		
BOLT DIAMETER (mm)	THREAD PITCH (mm)	TORQUE (POUND-FEET)
6	1.0	7
8	1.25	16
10	1.5	32
12	1.75	55
14	2.0	88
16	2.0	140
18	2.5	195
20	2.5	275
22	2.5	375
24	3.0	475

I. PARTS LIST

ITEM NO.	QTY.	PART NUMBER	DESCRIPTION
1	1	60A-56-0271	ASSEMBLED 600-56-0271
2	1	60K-56-0007	HARDWARE PACKAGE #7
3	1	60P-56-1941	PASS FRAME MOUNT
4	1	60P-56-1942	PASS FRAME MOUNT
5	6	307-13-0231	PARK ASSIST SENSOR GROMMET
6	6	443-10-0927	PUSH IN BUMPER 5/16" HOLE SIZE
7	6	601-56-2316	OUTSIDE PLUG
8	6	601-56-2711	SENSOR CLIP
9	2	601-56-2025	LOWER FRAME MOUNT



II. TOOL LIST

1. Basic tool kit
2. 8mm socket
3. 10mm socket
4. 19mm socket
5. 3/4" socket
6. 3/4" wrench
7. 9/16" wrench
8. 9/16" socket
9. Heavy duty scissors

III. REMOVAL OF OEM BUMPER

1. Unplug OEM wiring fog light/sensor harnesses. (if applicable)
NOTE: They are above the left fog light.

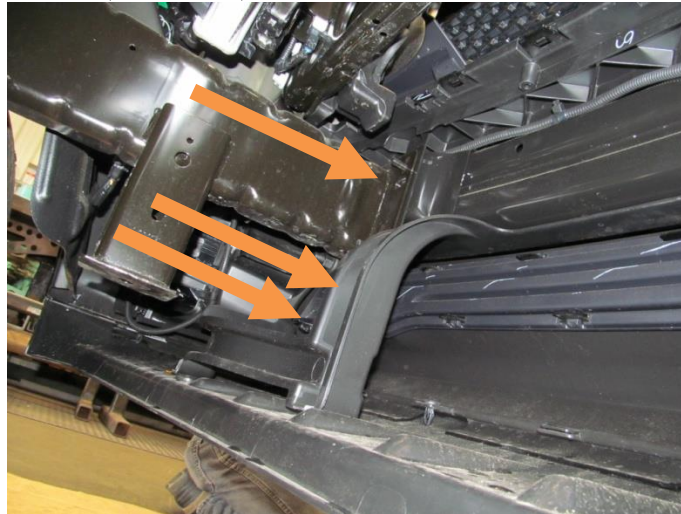


2013-20XX DODGE 1500 FRONT BUMPER

2. Underneath of vehicle remove 9 clips holding bottom shroud to OEM bumper. Remove bottom shroud and set aside.



3. Using an 18mm socket remove 3 nuts holding bumper to frame mount.(both sides)

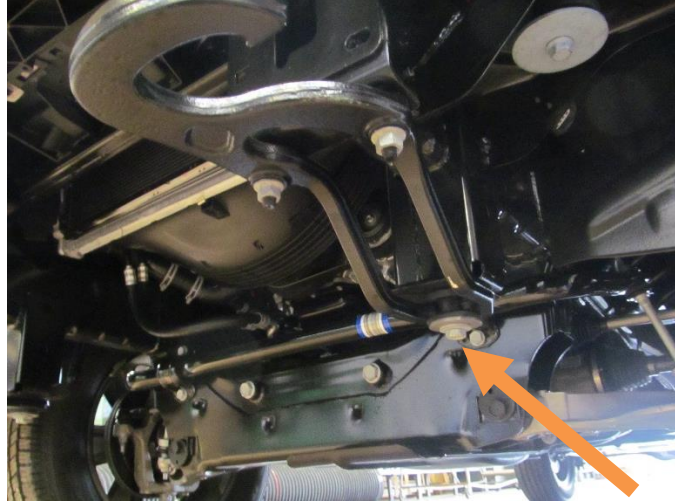


4. Carefully remove bottom lower OEM chrome bumper and set aside.
(for trucks with metal lower bumper)



2013-20XX DODGE 1500 FRONT BUMPER

5. Hold tow hook firmly and use an 18mm socket to remove bolt in bottom of tow hook. Set tow hook aside.



6. Using an 8mm socket remove two screws attaching fender well to vehicle (both sides).



2013-20XX DODGE 1500 FRONT BUMPER

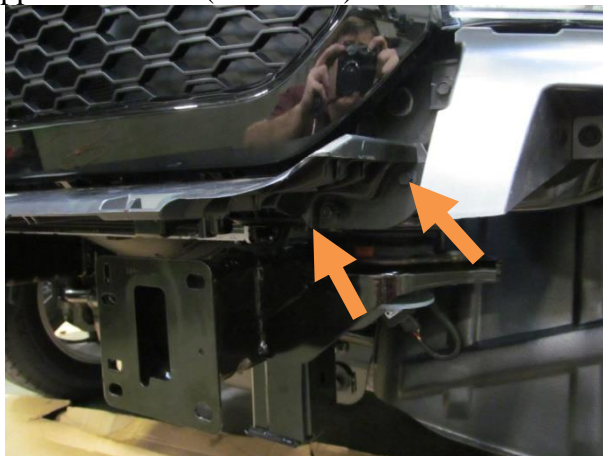
- Using a 10mm socket remove one screw from exposed area inside fender. The bolt is gray in color and has captive washer facing downwards. (both sides)



- Carefully pull plastic OEM bumper downward and toward the front of truck to dislodge plastic upper fascia from vehicle. Remove and set aside.



- Using 10mm socket remove two bolts holding on center bumper fascia support structure. (both sides)



2013-20XX DODGE 1500 FRONT BUMPER

10. Rotate structure downward and push towards vehicle to remove.



11. Using 10mm socket remove three bolts holding side bumper fascia support. Remove side bumper support and set aside. (both sides)



IV. PREPERATION OF HAMMERHEAD BUMPER FOR VEHICLES WITH SENSORS AND INSTALLATION

1. Carefully remove OEM sensors and wiring harness from OEM bumper. There are 8 plastic retainers sticking up through the top of the metal bumper. Push them down through the top.



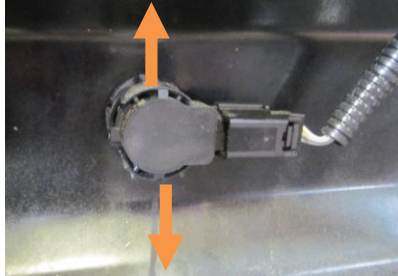


2013-20XX DODGE 1500 FRONT BUMPER

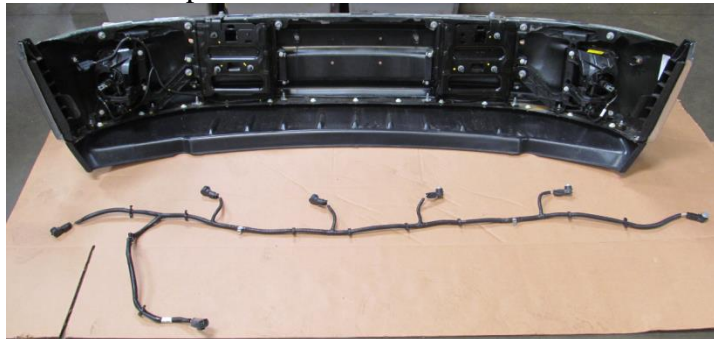
2. There are two metal clips that need to be removed from the OEM bumper.



3. Remove the sensors from the OEM grommets. Gently pry up on the top and bottom of the grommet to release the tabs retaining the sensor.



4. Now you can carefully remove the wiring harness and sensors from OEM bumper.



V. INSTALLATION OF HAMMERHEAD BUMPER

1. For bumpers without sensors, install outside plugs. (601-56-2316) (qty-6)

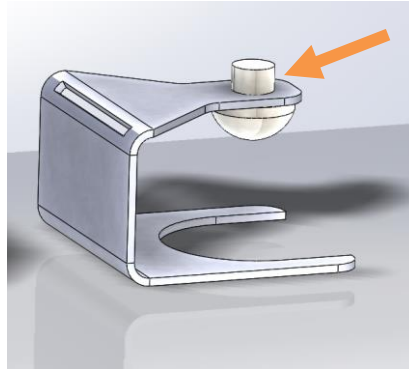


2. For bumpers with sensors, install rubber grommets (307-13-0231) in bumper. Place a drop of dish washing soap on each sensor to lubricate it. Install OEM sensors in bumper. The sensor's plugs will face inward and be horizontal. **NOTE: DO NOT TWIST SENSOR WHILE INSTALLING. THIS WILL DAMAGE IT.**



2013-20XX DODGE 1500 FRONT BUMPER

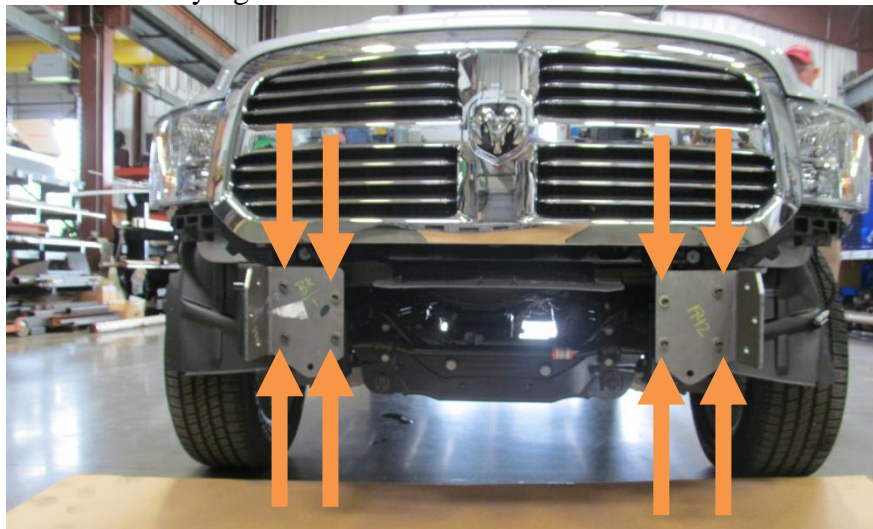
3. Install rubber bumper (443-10-0927) (orange arrow) in sensor clip. (601-56-2711) (qty-6)



4. Slide sensor clip over grommet and ensure rubber bumper touches the back of the sensor. This clip will retain the sensor in the grommet.



5. Install OEM sensor wiring harness and plug sensors in.
6. In steps 6-8 you will use hardware from kit #7. Using eight 3/8"-16 x 1.50" bolts, sixteen 3/8" flat washers, and eight 3/8" lock washers and eight 3/8"-16 nuts, attach Hammerhead frame mounts to OEM frame flange. Use 9/16" socket and wrench. Do not fully tighten.



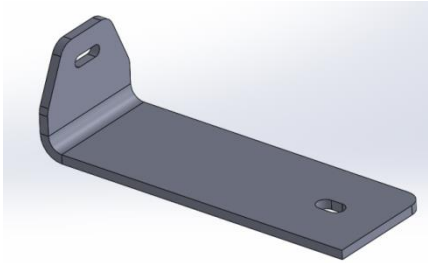


2013-20XX DODGE 1500 FRONT BUMPER

Using six ½”-13 x 1.50” bolts, 12 ½” flat washers, six ½” lock washers, and six ½”-13 nuts fasten Hammerhead bumper to Hammerhead frame mounts. Align bumper to center of vehicle, and tighten all hardware using ¾” wrench and socket.

NOTE: Align bumper a minimum of ¼” below headlights. When truck flexes off-road, this distance allows your bumper and body to have clearance.

7. Now you will attach the lower mount. Using one M12-1.75 x 25mm, one 12mm flat washer, and one 12mm lock washer attach long leg of Hammerhead lower frame mount to lower OEM frame horn. (Orange arrow) Use 19mm socket for bolt. Do not fully tighten.
8. Using one 3/8”-16 x 1.50” bolt, two 3/8” flat washers, and one 3/8” lock washer and one 3/8-16 nut, attach short leg of Hammerhead lower frame mount to Hammerhead frame mount. Use 9/16” wrench and socket to tighten bolts. Tighten M12 bolt at this time. (both sides)



Lower frame mount (601-56-2025) Qty-2



9. Using one 3/8”-16 x 1.50” bolt, two 3/8” flat washers, and one 3/8” lock washer and one 3/8-16 nut, attach short leg of Hammerhead lower frame mount to Hammerhead frame mount. Use 9/16” wrench and socket to tighten bolts. (both sides)
10. Plug in OEM wiring fog light/sensor harness. (if applicable)
11. Trim inner fenders to match Hammerhead bumper.



2013-20XX DODGE 1500 FRONT BUMPER



Congratulations! Your bumper installation is now complete.
Thank you for your purchase.