

# 2015-20XX FORD F-150 WITHOUT ADAPTIVE CRUISE CONTROL

## LOW PROFILE FRONT BUMPER INSTALLATION INSTRUCTIONS



## SAFETY

**Know safety, no injury. Know injury, no safety. ~Author Unknown**

If there are any questions, call 1-855-HHTOUGH

- **READ ALL SAFETY INSTRUCTIONS BEFORE INSTALLATION**
  - FOLLOW ALL INSTRUCTIONS FOR PROPER ASSEMBLY
  - WEAR APPROPRIATE EYE PROTECTION
  - EXERCISE CARE WHEN LIFTING COMPONENTS
  - USE APPROPRIATE TORQUE FOR BOLTS

SUGGESTED TORQUE VALUES FOR STEEL GRADE SAE 5 BOLTS

BOLT DIAMETER (INCH)	TREADS PER INCH	TORQUE (POUND-FEET)
1/4	20	7
5/16	18	14
3/8	16	25
7/16	14	40
1/2	13	60
9/16	12	88
5/8	11	120
3/4	10	200
7/8	9	302
1	8	466



2015-20XX FORD F-150

## I. PARTS LIST

<u>QUANTITY</u>	<u>PART NUMBER</u>	<u>DESCRIPTION</u>	<u>CHECKOFF</u>
1	600-56-0381, 0385	FRONT BUMPER	
1	60K-56-0052	HARDWARE KIT #52	
1	60K-56-0052	HARDWARE KIT #53	
1	601-56-2896	RIGHT FRAME MOUNT WELDMENT	
1	601-56-2897	LEFT FRAME MOUNT WELDMENT	
2	601-56-2868	WELDNUT TAB 3	
2	307-13-0132	RUBBER GROMMET	

## II. TOOL LIST

1. Standard tool kit
2. ¾" wrench
3. ¾" socket
4. 21mm socket
5. Extension
6. Flat head screwdriver
7. Pliers
8. 15mm socket

## III. REMOVAL OF OEM BUMPER

1. Remove all components from box and compare to parts list above
2. Unplug OEM fog lights and remove plastic clips from OEM bumper. (both sides)
3. Using 21mm socket, remove one nut from OEM bumper flange on outside of frame. (both sides)





## 2015-20XX FORD F-150

- Using flat head screwdriver, remove plastic piece on center of OEM bumper.



- Using 21mm socket and extension, remove four nuts attaching OEM bumper to frame. Remove OEM bumper and set aside.



- Remove OEM tow hook shroud by pulling away from the truck. (both sides)



- Using a 15mm socket, remove two bolts attaching OEM tow hook to frame. Set tow hook aside. (both sides)

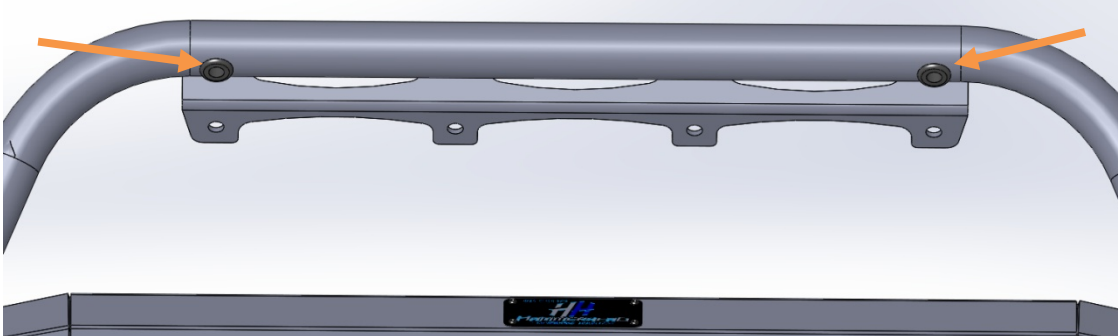




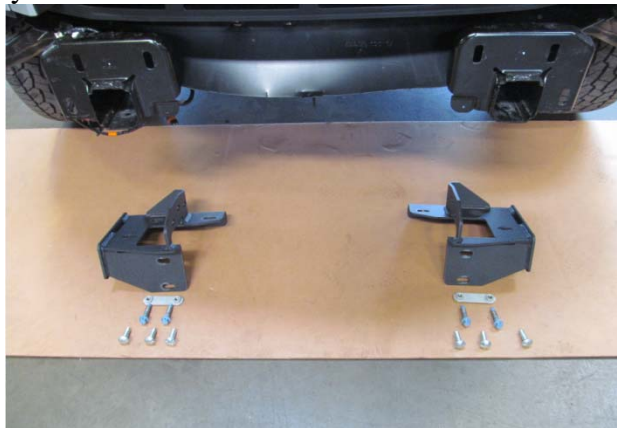
## 2015-20XX FORD F-150

### IV. INSTALLATION OF HAMMERHEAD BUMPER

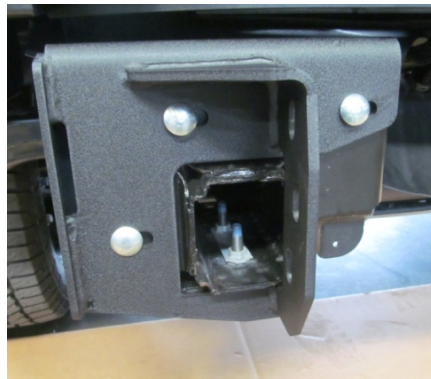
1. Install rubber grommets (307-13-0132) in prerunner center tube holes if applicable.



2. Lay bumper face down on carpeted surface or cardboard surface. Install all lights in bumper with brackets and hardware provided by light manufacturer.
3. Layout Hammerhead frame mounts as shown.



4. In this step you will use hardware kit #52, a 3/4" socket, and a 15mm socket. Install frame mounts using six 1/2"-13x1.5" carriage head bolts, six 1/2" flat washers, six 1/2" lock washers, and six 1/2"-13 nuts. Install carriage head bolts with the threads pointing to the truck. Use OEM tow hook hardware in bottom of Hammerhead frame mount. Install them with the bolts facing up and the nut strips in the frame. Do not fully tighten.





## 2015-20XX FORD F-150

5. In this step you will use hardware from kit #53, 601-56-2868 weldnut tab 3 (qty-2), and a  $\frac{3}{4}$ " socket. Use hoist to pickup bumper and position on mounts. Install weldnut tabs through hole in front of bumper. Use six  $\frac{1}{2}$ -13 bolts, six  $\frac{1}{2}$ " lock washers, and six  $\frac{1}{2}$ " flat washers to attach bumper to mounts.



6. Align bumper a minimum of  $\frac{1}{4}$ " below truck. When truck flexes off-road, this distance allows your bumper and body to have clearance. Tighten all hardware.



CONGRATULATIONS!