

2011-20XX, FORD, F-250 – F-550

FRONT LOW PRO BUMPER INSTALLATION INSTRUCTIONS



SAFETY

Know safety, no injury. Know injury, no safety. ~Author Unknown

If there are any questions, call 1-855-HHTOUGH

- **READ ALL SAFETY INSTRUCTIONS BEFORE INSTALLATION**
 - FOLLOW ALL INSTRUCTIONS FOR PROPER ASSEMBLY
 - WEAR APPROPRIATE EYE PROTECTION
 - EXERCISE CARE WHEN LIFTING COMPONENTS
 - USE APPROPRIATE TORQUE FOR BOLTS

SUGGESTED TORQUE VALUES FOR STEEL GRADE SAE 5 BOLTS

BOLT DIAMETER (INCH)	TREADS PER INCH	TORQUE (POUND-FEET)
1/4	20	7
5/16	18	14
3/8	16	25
7/16	14	40
1/2	13	60
9/16	12	88
5/8	11	120
3/4	10	200
7/8	9	302
1	8	466



2011-20XX, FORD, F-250 – F-550

I. PARTS LIST

<u>QUANTITY</u>	<u>PART NUMBER</u>	<u>DESCRIPTION</u>	<u>CHECKOFF</u>
1	600-56-0397 OR 0417	LOW PRO BUMPER	
1	60K-56-0011	HARDWARE KIT #11	
1	60K-56-0057	HARDWARE KIT#57 (BAR MOUNT)	
1	60P-56-0397	600-56-0397 POLISHED	
1	60P-56-1061	PAINTED PASS FRAME MOUNT	
1	60P-56-1062	PAINTED DRIVER FRAME MOUNT	
1	601-56-2958	RIGHT BAR MOUNT	
1	601-56-2959	LEFT BAR MOUNT	

II. TOOL LIST

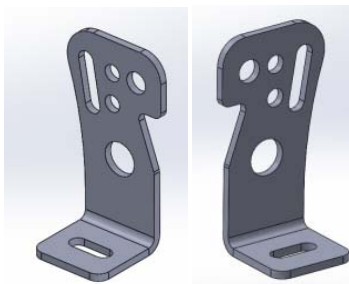
1. Basic tool set
2. ¾" wrench
3. ¾" socket
4. 18mm socket
5. 10mm socket

III. REMOVAL OF OEM BUMPER

1. Remove all components from box and compare to parts list above.
2. Unplug OEM fog lights.
3. Using 10mm socket, remove four side bumper brace bolts in front of tire. Set brace aside. Both sides.
4. Using 18mm wrench, remove four bolts attaching OEM bumper to truck. The bolts are accessible from the front of the truck beside the tow hooks. Remove OEM bumper and set aside.

IV. INSTALLATION OF HAMMERHEAD BUMPER

1. Install all lights in Hammerhead bumper at this time. Use included Bar mount brackets (601-56-2958 and 2959) and Hardware kit #57 to attach 20" bar in bumper to mount in bumper. Use hole in bracket and bumper that works best with your light bar. Tighten bolts from hardware kit #57 with 7/16" socket and wrench.



2958 and 2959 brackets



2. After the OEM bumper is removed you will need to install the Hammerhead frame mounts. Hardware Kit #11 will be used to install these brackets to the inside of the frame rail as shown in the pictures below. Use two 1/2"-13 x 1.5" bolts, four 1/2" flat washers, two lock washers and a two 1/2"-13 nuts. Both sides.

Passenger side frame rail



Driver side frame rail



Front end with Hammerhead frame mounts installed





2011-20XX, FORD, F-250 – F-550

3. Use four OEM bolts in outside holes. They will attach to the tow hook brackets in the OEM location. Do not fully tighten.
4. In this step you will use the remainder of hardware kit #11. Use four 1/2"-13 x 1.5" bolts, eight 1/2" flat washers, four lock washers and a four 1/2"-13 nuts to attach bumper to Hammerhead frame mounts.

Align bumper a minimum of 1/4" below headlights. When truck flexes off-road, this distance allows your bumper and body to have clearance. Tighten all hardware at this time.



Congratulations! Your bumper installation is now complete.
Thank you for your purchase.