

2012-2015 Toyota Tacoma

FRONT BUMPER INSTALLATION INSTRUCTIONS



SAFETY

Know safety, no injury. Know injury, no safety. ~Author Unknown

If there are any questions, call 1-855-HHTOUGH

- **READ ALL SAFETY INSTRUCTIONS BEFORE INSTALLATION**
 - FOLLOW ALL INSTRUCTIONS FOR PROPER ASSEMBLY
 - WEAR APPROPRIATE EYE PROTECTION
 - EXERCISE CARE WHEN LIFTING COMPONENTS
 - USE APPROPRIATE TORQUE FOR BOLTS
 - BLUE THREAD LOCKING COMPOUND IS RECOMMENDED ON ALL BOLT

- SUGGESTED TORQUE VALUES FOR STEEL GRADE SAE 5 BOLT

BOLT DIAMETER (INCH)	TREADS PER INCH	TORQUE (POUND-FEET)
1/4	20	7
5/16	18	14
3/8	16	25
7/16	14	40
1/2	13	60
9/16	12	88
5/8	11	120
3/4	10	200
7/8	9	302
1	8	466

I. PARTS LIST

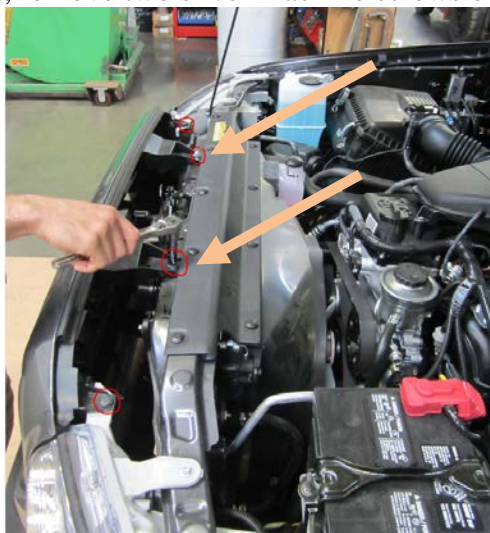
<u>QUANTITY</u>	<u>PART NUMBER</u>	<u>DESCRIPTION</u>
1	600-56-0420	2012-2015 TOYOTA TACOMA FRONT BUMPER
1	601-56-1894	SKIDPLATE
1	601-56-1892	PASSENGER FRAME MOUNT
1	601-56-1893	DRIVER FRAME MOUNT
1	60K-56-0064	HARDWARE KIT #64
1	60K-56-0065	HARDWARE KIT #65
1	60K-56-0066	HARDWARE KIT #66
2	601-56-0479	WELDNUT TAB 4
2	307-13-0235	¾"SEALING GROMMET

II. TOOL LIST

1. Basic tool kit
2. 10mm socket
3. 14mm socket
4. 17mm socket
5. 7/16" wrench
6. 7/16" socket
7. 3/4" wrench
8. 3/4" socket
9. Flathead screwdriver
10. Heavy duty scissors

III. REMOVAL OF OEM BUMPER

1. Open hood.
2. Using 10mm socket, remove two silver machine screws on top inside of grille.



2012-2015 TOYOTA TACOMA FRONT BUMPER

3. Remove two plastic clips on top outside of grille (shown in previous image).
4. Remove three plastic clips from bottom inside of grille. (one on each side and one in the middle, middle clip is hidden from view inside grille)



5. Using flathead screwdriver, remove plastic quarter turn fastener. Then, using 10mm socket, remove screw in fender well. (both sides)



2012-2015 TOYOTA TACOMA FRONT BUMPER

- Using 10mm socket, remove six screws in the bottom of OEM bumper.



- Unplug OEM fog lights (if applicable)
- Remove trim pieces under headlights by gently pulling away from the truck to remove the first tab.



2012-2015 TOYOTA TACOMA FRONT BUMPER

9. Then gently pull toward the center of the truck to remove the second set of tabs.



10. Remove OEM bumper cover by gently pulling away from the truck. (both sides)



2012-2015 TOYOTA TACOMA FRONT BUMPER

11. Carefully set OEM bumper cover aside.



12. Remove 8 tabs on bottom inside of grille to separate OEM bumper cover from grille.



2012-2015 TOYOTA TACOMA FRONT BUMPER

13. Using 10mm socket, remove four nuts from center OEM support structure and set aside. This will not be reused.



2012-2015 TOYOTA TACOMA FRONT BUMPER

14. Using 10mm socket, remove two nuts from side OEM support structure, and one bolt from center of plastic bracket. (both sides)



15. Remove side OEM support structure and set aside. This will not be reused. (both sides)



16. Remove plastic bracket by gently pulling away from truck.

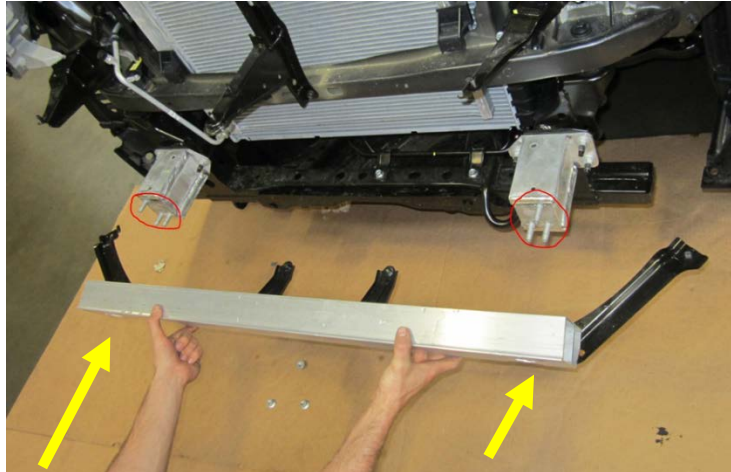


2012-2015 TOYOTA TACOMA FRONT BUMPER

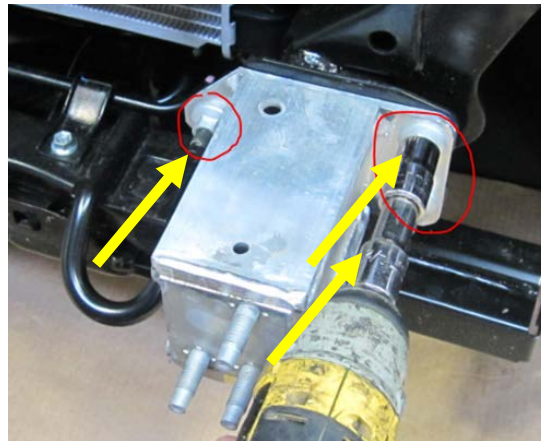
17. Using 10mm socket, remove two bolts from OEM support structure bracket.
Gently slide bracket towards center of truck to remove. (both sides)



18. Using 14mm socket, remove six nuts from aluminum OEM bumper. Pull away from truck to remove.

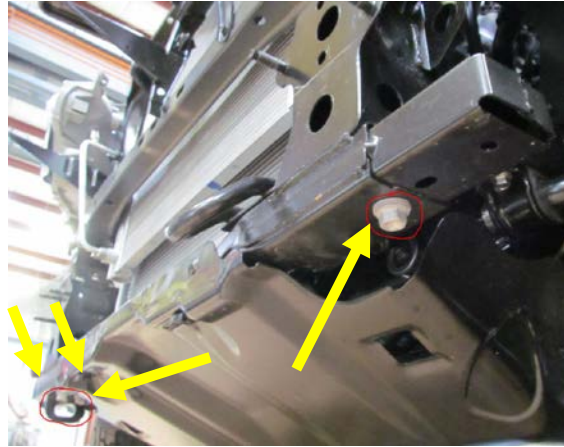


19. Using 14mm socket, remove three nuts from aluminum OEM bumper bracket. (both sides)



2012-2015 TOYOTA TACOMA FRONT BUMPER

20. Using 17mm socket, remove four bolts from bottom of frame rail. (two are on OEM tow hook on passenger side of truck)



21. Remove frame rail ends by pulling away from center of truck. These will not be reused.

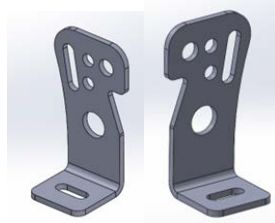


22. Reinstall grille using 10mm socket and two factory screws. Install the two top clips into the grille also.



IV. INSTALLATION OF HAMMERHEAD BUMPER

1. Install all lights in Hammerhead bumper at this time.
Use included Bar mount brackets (601-56-2958 and 2959) and Hardware kit #57 to attach 20" bar in bumper to mount in bumper. Use hole in bracket and bumper that works best with your light bar. Tighten bolts from hardware kit #57 with 7/16" socket and wrench.



2958 and 2959 brackets



2. Lay out frame mounts and OEM hardware as shown. You will utilize the six factory nuts from the OEM bumper brackets and Hardware Kit #66.



2012-2015 TOYOTA TACOMA FRONT BUMPER

- Slide frame mounts over factory bolts and install OEM nuts. Install a 1/2" bolt, lock washer, two flat washers, and a 1/2" nut in the bottom tab of each frame mount. Hand tighten ONLY.



- Using 10mm socket and factory screw, install headlight trim tab as shown. (both sides)



- Reinstall OEM headlight trim by pressing clip through the hole in the Hammerhead headlight trim tab. (both sides)



2012-2015 TOYOTA TACOMA FRONT BUMPER

- Using weldnut tabs provided and hardware kit #64, install and align hammerhead bumper. Ensure that each 1/2" bolt receives a flat washer and lock washer.



- Once bumper is aligned, tighten all hardware. Using 14mm socket, tighten factory hardware on frame mounts to spec. Using 3/4" socket and wrench, torque bolts in bottom of frame mounts and bumper bolts to spec.
- Using hardware from provided hardware kit #65, install and align skidplate. Ensure that each 1/2" bolt receives a flat washer and that each 1/2" nut receives a flat washer and lock washer.



- Using 3/4" socket and 3/4" wrench, torque bolts in skidplate to specs.
- Using heavy duty scissors, trim OEM fenderwells to match bumper profile.



2012-2015 TOYOTA TACOMA FRONT BUMPER



Congratulations! Your bumper installation is now complete.
Thank you for your purchase.