

2007-2013, GMC, 1500

FRONT BUMPER INSTALLATION INSTRUCTIONS



SAFETY

Know safety, no injury. Know injury, no safety. ~Author Unknown

If there are any questions, call 1-855-HHTOUGH

- **READ ALL SAFETY INSTRUCTIONS BEFORE INSTALLATION**
 - FOLLOW ALL INSTRUCTIONS FOR PROPER ASSEMBLY
 - WEAR APPROPRIATE EYE PROTECTION
 - EXERCISE CARE WHEN LIFTING COMPONENTS
 - USE APPROPRIATE TORQUE FOR BOLTS

SUGGESTED TORQUE VALUES FOR STEEL GRADE SAE 5 BOLTS

BOLT DIAMETER (INCH)	TREADS PER INCH	TORQUE (POUND-FEET)
1/4	20	7
5/16	18	14
3/8	16	25
7/16	14	40
1/2	13	60
9/16	12	88
5/8	11	120
3/4	10	200
7/8	9	302
1	8	466



2007-2013, GMC 1500 FRONT

I. PARTS LIST

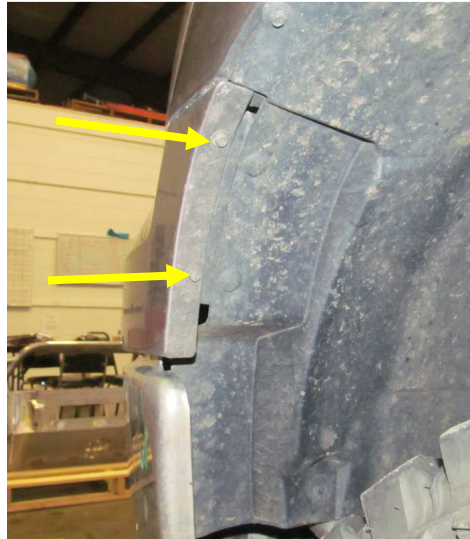
<u>QUANTITY</u>	<u>PART NUMBER</u>	<u>DESCRIPTION</u>	<u>CHECKOFF</u>
1	600-56-0465	FRONT BUMPER	
1	601-56-1313	DRIVER FRAME MOUNT	
1	601-56-1312	PASS FRAME MOUNT	
1	60K-56-0004	HARDWARE KIT #4	
1	60K-56-0057	HARDWARE KIT #57	
1	601-56-2958	RIGHT BAR MOUNT	
1	601-56-2959	LEFT BAR MOUNT	

II. TOOL LIST

1. Basic tool set
2. ¾" wrench
3. ¾" socket
4. 7mm socket
5. 10mm socket
6. 15mm socket
7. Flathead screw driver or trim tool
8. Pliers
9. 21mm socket
10. 18mm socket
11. 18mm wrench
12. T20 Torx
13. Blue Painter's Tape
14. 7/16" socket
15. 7/16" wrench

III. REMOVAL OF OEM BUMPER

1. Remove all components from box and compare to parts list above.
2. Using 7mm socket, remove two bolts attaching plastic fascia to fender wells. (both sides)

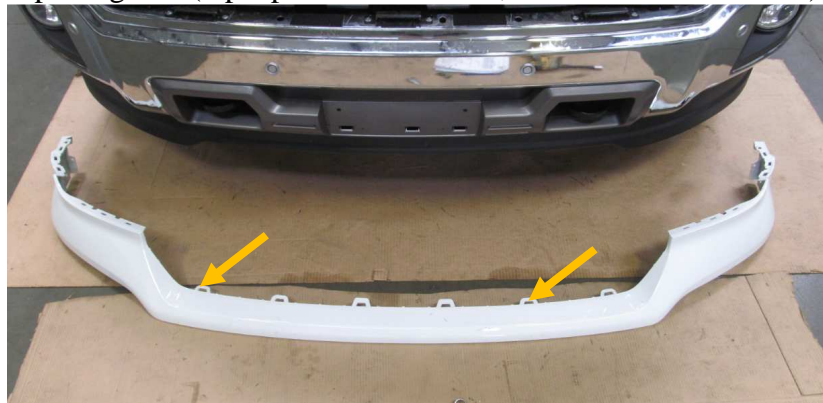


2007-2013, GMC 1500 FRONT

- Using a flathead screwdriver, remove all tabs (8) holding top cover onto top of grill and set aside. (Will be reused)



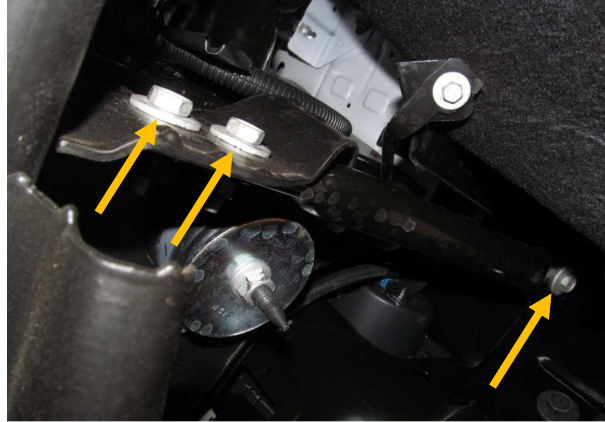
- Using a flathead screwdriver remove plastic fascia from bottom of grill and pull out and away. Do this by pressing down on tabs and gently pulling out. (2 people recommended, This will not be reused)



- At this point place a few layers of blue painter's tape on the bottom surface of the grill, headlights, and fenders to prevent any accidental rubbing during the install process.

2007-2013, GMC 1500 FRONT

- Using 15mm socket, remove three bolts attaching side bumper brace to frame. Set brace aside. (both sides, this will not be reused)



- Remove 4 tabs holding rubber guard sheet to bumper. This is best done using pliers or a trim tool. Set aside and trim guard sheet if desired. (Will not be reused)



- Disconnect fog lights from bumper and tie back wires in an out of the way location.

2007-2013, GMC 1500 FRONT

9. Using a 21mm socket, remove bolt strips. This will free up the bumper so do not remove the bolt strips until your bumper is properly supported. Set aside. (Strips and nuts will be reused)



10. Using 10mm socket, Remove three screws attaching plastic fascia brace to fender. Set brace aside; it will not be reused. (both sides)



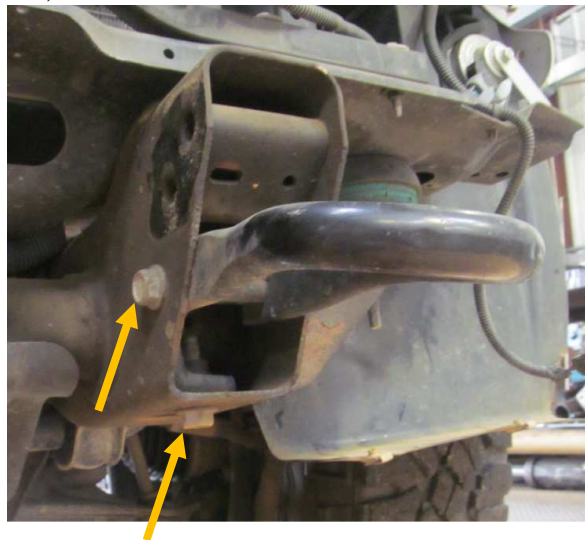


2007-2013, GMC 1500 FRONT

11. Using T20 torx bit, remove two screws attaching plastic clip to bottom of headlight. Remove clip and set aside. (both sides, will not be reused)



12. Using 18mm socket and wrench, remove two bolts attaching OEM tow hook to frame. Set tow hook aside. (both sides, long bolt will be reused, tow hook and short bolt will not be reused)

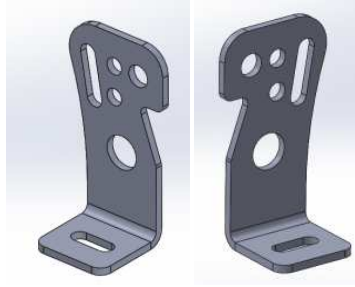


IV. INSTALLATION OF HAMMERHEAD BUMPER

1. Install all lights in Hammerhead bumper at this time. Use included bar mount brackets (601-56-2958 and 2959) and Hardware kit #57 to attach 20" bar in bumper to mount in bumper. Use hole in bracket and bumper that works best with your light bar. Tighten bolts from hardware kit #57 with 7/16" socket and wrench.



2007-2013, GMC 1500 FRONT



2958 and 2959 brackets



2. Attach Hammerhead frame mounts to OEM frame with OEM bolt strips and OEM tow hook bolt as shown in the two pictures below. Push mounts to top of slots and tighten.
NOTE: Insert bolt strips from the outside.





2007-2013, GMC 1500 FRONT



3. In this step you will use hardware from kit # 4. Install and align Hammerhead bumper using (4) 1/2" -13 x 2" bolts, (8) 1/2" flat washers, (4) 1/2" lock washers and (4) 1/2"-13 nuts. Use this hardware to attach bumper to HH frame mounts.



NOTE: Align bumper a minimum of 1/4" below headlights. When truck flexes off-road, this distance allows your bumper and body to have clearance. Tighten all hardware using 3/4" socket and wrench.

4. Connect bumper lights to truck wiring harness using connections supplied with your lights.
5. Trim plastic fender wells to match bumper and remove blue painter's tape. (both sides)



Congratulations! Your bumper installation is now complete.
Thank you for your purchase.