

2016-20XX GMC 1500

FRONT BUMPER INSTALLATION INSTRUCTIONS



SAFETY

Know safety, no injury. Know injury, no safety. ~Author Unknown

- **READ ALL SAFETY INSTRUCTIONS BEFORE INSTALLATION**
 - FOLLOW ALL INSTRUCTIONS FOR PROPER ASSEMBLY
 - WEAR APPROPRIATE EYE PROTECTION
 - EXERCISE CARE WHEN LIFTING COMPONENTS
 - USE APPROPRIATE TORQUE FOR BOLTS
 - BLUE THREAD LOCKING COMPOUND IS RECOMMENDED ON ALL BOLTS
- SUGGESTED TORQUE VALUES FOR STEEL GRADE SAE 5 BOLTS

BOLT DIAMETER (INCH)	TREADS PER INCH	TORQUE (POUND-FEET)
1/4	20	7
5/16	18	14
3/8	16	25
7/16	14	40
1/2	13	60
9/16	12	88
5/8	11	120
3/4	10	200
7/8	9	302
1	8	466



2015-2016 GMC 1500 FRONT

I. PARTS LIST

<u>QUANTITY</u>	<u>PART NUMBER</u>	<u>DESCRIPTION</u>
1	60A-56-0487	FRONT BUMPER
1	60K-56-0001	HARDWARE KIT #1
1	60K-56-0058	HARDWARE KIT #58
4	316-01-0005	1.25" PLUG BT-FLUSH LDPE BLACK
1	601-56-2155	PAINTED PASS LOWER FRAME MOUNT
1	601-56-2156	PAINTED DRIVER LOWER FRAME MOUNT
1	601-56-3383	RIGHT FRAME MOUNT
1	601-56-3384	LEFT FRAME MOUNT

II. TOOL LIST

1. 15mm socket
2. 18mm socket
3. 15mm wrench
4. 18mm wrench
5. T15 Torx bit
6. 7mm socket
7. Flat head screwdriver
8. ¾" wrench
9. ¾" socket

III. REMOVAL OF OEM BUMPER

1. Remove two screws on bottom of OE fender flare with T15 Torx bit and 7mm socket. (both sides)





2015-2016 GMC 1500 FRONT

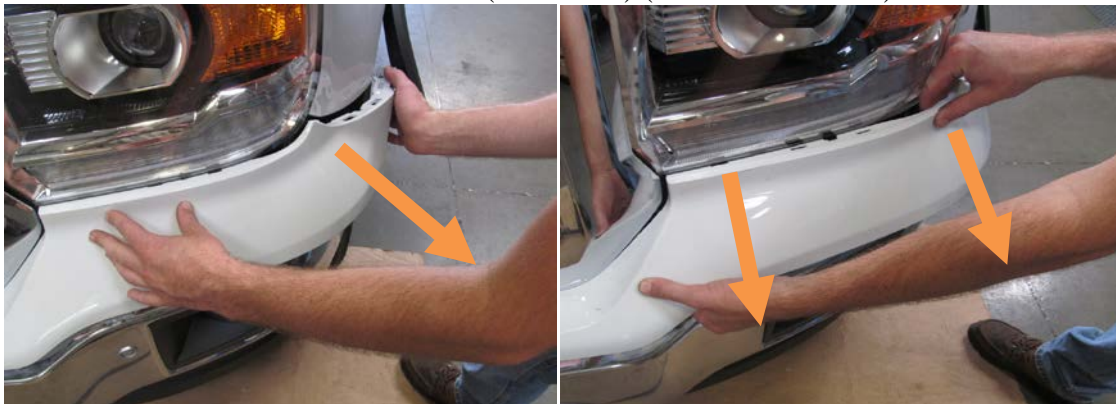
2. Gently pull away from truck on OE fender flare as shown. (both sides)



3. Remove screw holding on plastic trim piece with 7mm socket. (both sides)



4. Pull out on edge of plastic trim to release the tabs as shown. Pull in direction of arrows. (both sides) (2014-2015 shown)



5. Release six tabs on center of plastic trim below the grill. Have a friend gently pull out on the plastic trim as you release the tabs behind the

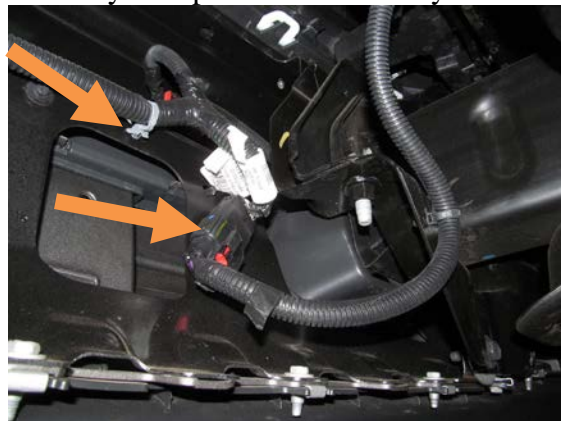


2015-2016 GMC 1500 FRONT

grill. A flathead screwdriver works well to help pry the tabs. Gently set aside plastic trim; it will be reused.



6. Unplug the OE fog light and sensor wiring harness and place it on top of the factory skid plate out of the way.



7. Remove OE bumper bolt behind bumper with 18mm socket. (both sides)



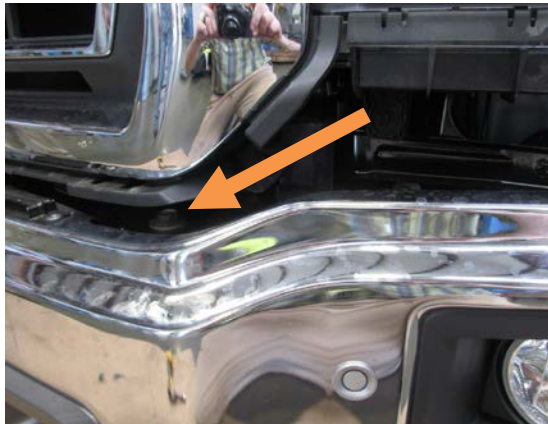
2015-2016 GMC 1500 FRONT



8. Remove three bolts from OE side bumper support (in front of tires) with 15mm socket. (both sides)



9. Remove OE bumper bolt with 18mm wrench. (both sides) Remove OE bumper and set aside.



10. Remove six bolts holding on OE frame flanges to frame with 15mm socket.



2015-2016 GMC 1500 FRONT



11. Remove two bolts attaching OE tow hooks with 18mm socket and wrench. (both sides) Set tow hooks aside.



IV. INSTALLATION OF HAMMERHEAD BUMPER

1. Reinstall OE plastic trim.

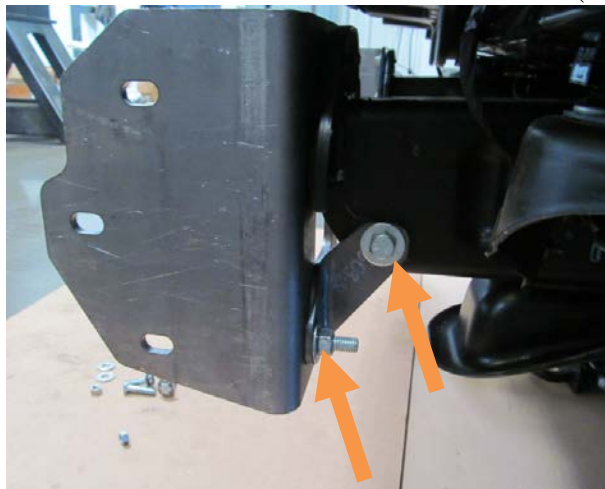


2015-2016 GMC 1500 FRONT

2. Install Hammerhead frame mounts (601-56-3383 and -3384) with OE hardware and loosely tighten as shown. **USE THE TOP HOLES IN THE MOUNTS.**



3. Install Hammerhead lower frame mounts (601-56-2155 and 601-56-2156) and loosely tighten. Use OE hardware for thru frame bolt and use two ½"-13 x 2" bolts, four flat washers, two lock washers and two nuts from Hardware kit #1 for the lower bolts. (orange arrows).



4. Using Hardware from kit #1, install and align Hammerhead bumper. Tighten all hardware using ¾" wrench and socket.



2015-2016 GMC 1500 FRONT

Note: Align bumper a minimum of ¼" below plastic trim. When truck flexes off-road, this distance allows your bumper and body to have clearance.



(Hammerhead Low Profile Bumper shown. Your bumper appearance will differ slightly)

Congratulations! Your installation is now complete.
Thank you for your purchase.