

2009-2013 DODGE 1500

2010-2013 DODGE 2500-3500

REAR BUMPER INSTALLATION INSTRUCTIONS



SAFETY

KNOW SAFETY, NO INJURY. KNOW INJURY, NO SAFETY. ~AUTHOR UNKNOWN

- **READ ALL SAFETY INSTRUCTIONS BEFORE INSTALLATION**
 - FOLLOW ALL INSTRUCTIONS FOR PROPER ASSEMBLY
 - WEAR APPROPRIATE EYE PROTECTION
 - EXERCISE CARE WHEN LIFTING COMPONENTS
 - USE APPROPRIATE TORQUE FOR BOLTS
 - BLUE THREAD LOCKING COMPOUND IS RECOMMENDED ON ALL BOLTS
 - CHECK TORQUE AFTER FIRST 100 MILES



2009-2013 DODGE 1500,

2010-2013 DODGE 2500-3500

I. TOOL LIST

1. 15MM SOCKET
2. 21MM SOCKET
3. ¾" WRENCH
4. ¾" SOCKET

II. REMOVAL OF OEM BUMPER

1. UNPLUG THE OEM LICENSE PLATE LIGHTS FROM THE BUMPER HOUSING. SEE FIGURE 1

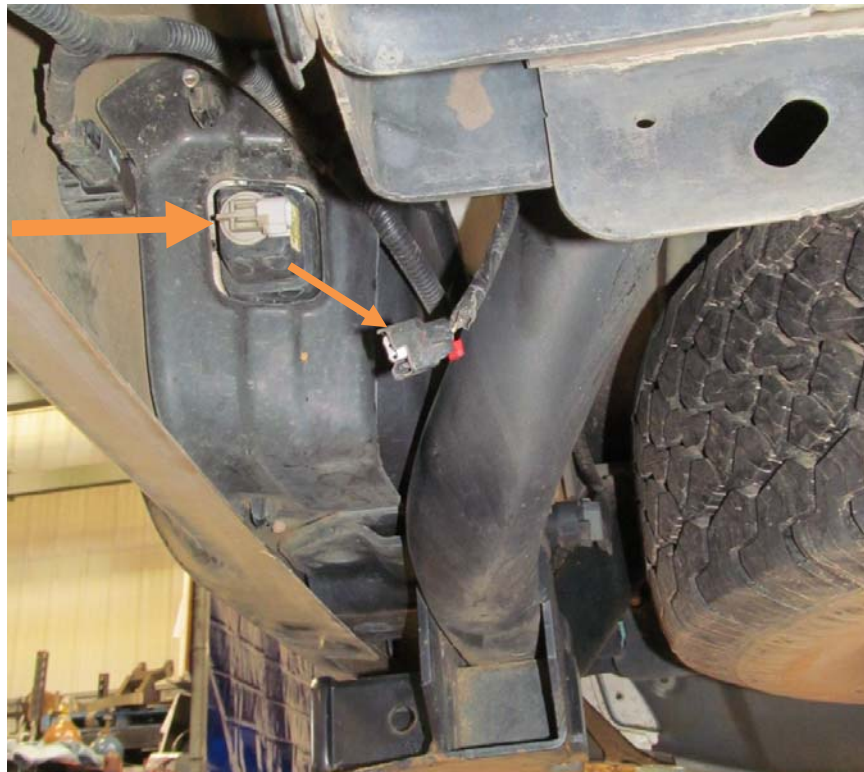


FIGURE 1



2009-2013 DODGE 1500,

2010-2013 DODGE 2500-3500

2. UNHOOK OEM TRAILER PLUG CONNECTION FROM HOUSING IN BUMPER.
SEE FIGURES 2A AND 2B.



FIGURE 2A

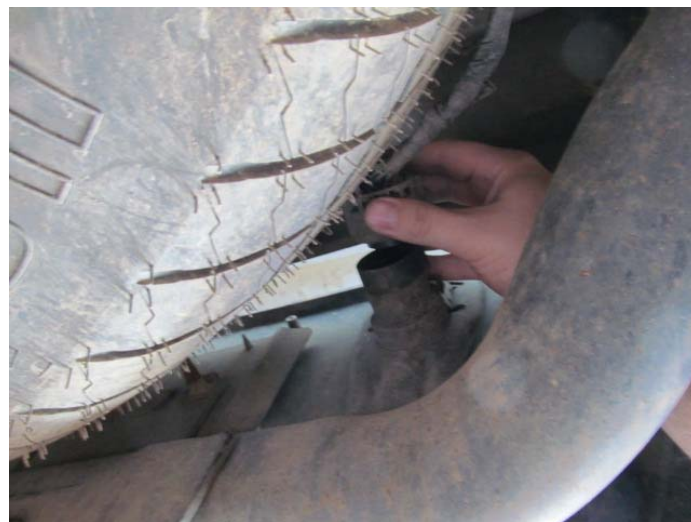


FIGURE 2B



2009-2013 DODGE 1500,

2010-2013 DODGE 2500-3500

3. REMOVE WIRE HARNESS FOR PARK ASSIST SENSORS (IF APPLICABLE)
4. REMOVE LICENSE PLATE FROM OEM BUMPER. SEE FIGURE 3.



FIGURE 3

4. BEHIND THE LICENSE PLATE THERE ARE TWO BOLTS. USE 15MM TO REMOVE BOTH BOLTS. SEE FIGURE 4.



FIGURE 4



2009-2013 DODGE 1500,

2010-2013 DODGE 2500-3500

5. USING 15MM REMOVE TWO BOLTS HOLDING ON OEM BUMPER. SEE FIGURES 5A AND 5B.



FIGURE 5A



FIGURE 5B.

6. CAREFULLY REMOVE OEM REAR BUMPER AND SET ASIDE



2009-2013 DODGE 1500,

2010-2013 DODGE 2500-3500

7. REMOVE TRAILER PLUG HOUSING FROM OEM BUMPER

8. CAREFULLY REMOVE EACH SENSOR FROM THE CLIP IN ITS HOUSING IN OEM BUMPER. SEE FIGURE 6.



FIGURE 6



2009-2013 DODGE 1500,

2010-2013 DODGE 2500-3500

III. INSTALLATION

1. POSITION FRAME MOUNTS AS SHOWN IN FIGURES 7, 8, 9.



FIGURE 7



FIGURE 8



2009-2013 DODGE 1500,

2010-2013 DODGE 2500-3500



FIGURE 9

2. ALIGN HAMMERHEAD BUMPER TO VEHICLE.

3. USING HARDWARE KIT # 10, SECURE HAMMERHEAD BUMPER TO TRUCK AS SHOWN IN FIGURE 10.(BOTH SIDES)



FIGURE 10



2009-2013 DODGE 1500,

2010-2013 DODGE 2500-3500

4. USING 15MM SOCKET INSTALL TWO BOLTS INTO LICENSE PLATE AREA.
SEE FIGURE 11.



FIGURE 11.

5. INSTALL TRAILER PLUG HOUSING. SEE FIGURE 12.



FIGURE 12

6. WIRE AND ROUTE LICENSE PLATE LIGHTS AND REVERSE LIGHTS

7. WIRE PARK ASSIST SENSOR HARNESS TO HAMMERHEAD BUMPER.



2009-2013 DODGE 1500,

2010-2013 DODGE 2500-3500

8. PLACE GROMMETS INSIDE OF SENSOR CUT OUTS IN BUMPER SEE FIGURE 13.(IF APPLICABLE)



FIGURE 13

9. PLACE PARK ASSIST SENSOR INSIDE OF EACH GROMMET. TAKE CARE NOT TO TWIST OR DAMAGE SENSOR IN ANYWAY.



2009-2013 DODGE 1500,

2010-2013 DODGE 2500-3500

**CONGRATULATIONS AND ENJOY YOUR NEW HAMMERHEAD PREMIUM
AFTERMARKET BUMPER!**

