

1994-2002 DODGE 1500-3500

FRONT BUMPER INSTALLATION INSTRUCTIONS



SAFETY

Know safety, no injury. Know injury, no safety. ~Author Unknown

- **READ ALL SAFETY INSTRUCTIONS BEFORE INSTALLATION**
 - FOLLOW ALL INSTRUCTIONS FOR PROPER ASSEMBLY
 - WEAR APPROPRIATE EYE PROTECTION
 - EXERCISE CARE WHEN LIFTING COMPONENTS
 - USE APPROPRIATE TORQUE FOR BOLTS
 - BLUE THREAD LOCKING COMPOUND IS RECOMMENDED ON ALL BOLT
- SUGGESTED TORQUE VALUES FOR STEEL GRADE SAE 5 BOLT

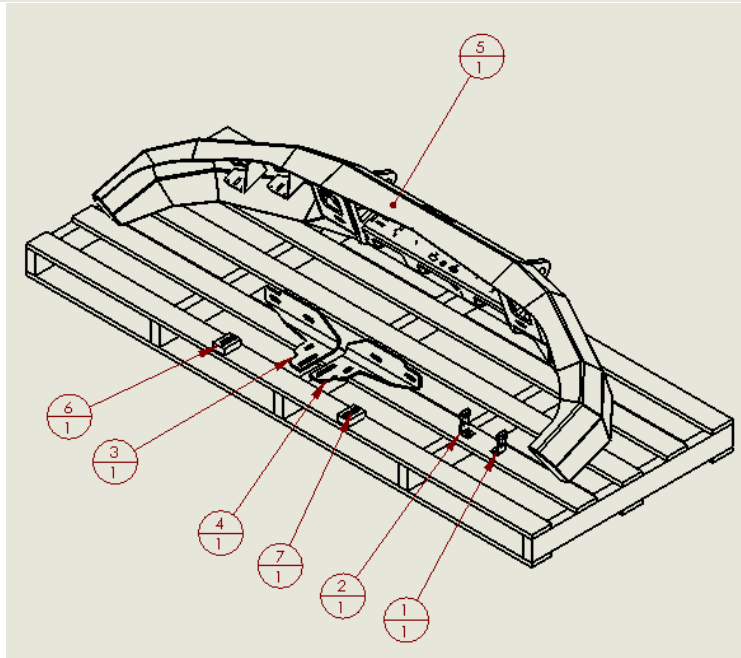
BOLT DIAMETER (INCH)	TREADS PER INCH	TORQUE (POUND-FEET)
1/4	20	7
5/16	18	14
3/8	16	25
7/16	14	40
1/2	13	60
9/16	12	88
5/8	11	120
3/4	10	200
7/8	9	302
1	8	466



94-02 DODGE 1500-3500 FRONT

I. PARTS LIST

ITEM NO.	QTY.	PART NUMBER	DESCRIPTION	
1	1	601-56-2958	RIGHT BAR MOUNT	-
2	1	601-56-2959	LEFT BAR MOUNT	-
3	1	601-56-3400	LEFT FRAME MOUNT	-
4	1	601-56-3401	RIGHT FRAME MOUNT	-
5	1	60P-56-0539	600-56-0539 POLISHED	-
6	1	60K-56-0057	HARDWARE KIT #57	-
7	1	60K-56-0080	HARDWARE KIT #80	-



II. TOOL LIST

1. 18mm Socket
2. 3/4" Wrench
3. 3/4" Socket
4. 7/16" Socket
5. 7/16" Wrench
6. Standard Tool Kit



94-02 DODGE 1500-3500 FRONT

III. REMOVAL OF OEM BUMPER

1. Using an 18mm socket remove single bolt from bracket to frame of vehicle.(both sides)see figures 1 and 2.



FIGURE 1



FIGURE 2



94-02 DODGE 1500-3500 FRONT

2. Using an 18mm wrench remove single nut from bracket to bumper (both sides). See figure 3



FIGURE 3

3. Remove bracket from vehicle (both sides). See figure 4



FIGURE 4



94-02 DODGE 1500-3500 FRONT

4. Using 18mm socket remove three bolts securing frame to bumper (both sides) (extension and universal joint may be needed) see figures 5 and 6.



FIGURE 5



FIGURE 6

5. Carefully remove OE bumper from vehicle.



94-02 DODGE 1500-3500 FRONT

IV. INSTALLATION

1. Align frame mounts to INSIDE of frame. See figures 7, 8, and 9.

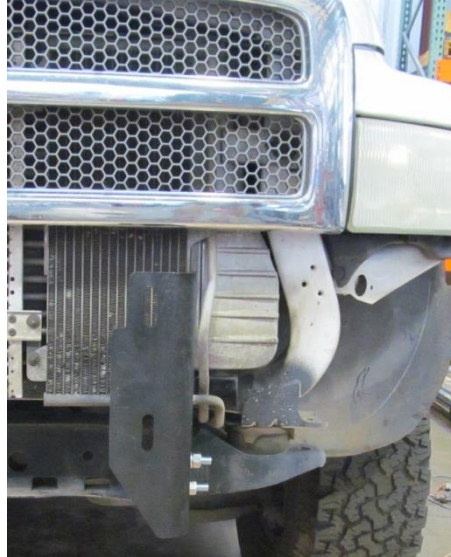


FIGURE 7: FRONT VIEW OF DRIVER SIDE FRAME MOUNT





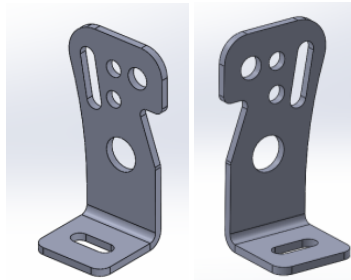
94-02 DODGE 1500-3500 FRONT

FIGURE 8: OUTSIDE VIEW OF FRAME MOUNTS



FIGURE 9: INSIDE VIEW OF FRAME MOUNTS

2. Using three bolts from hardware kit 1 and a $\frac{3}{4}$ " socket/wrench secure frame mounts to frame. (both sides)
3. Install all lights in Hammerhead bumper at this time. Use included Bar mount brackets (601-56-2958 and 2959) and Hardware kit #57 to attach 20" bar in bumper to mount in bumper. Use hole in bracket and bumper that works best with your light bar. Tighten bolts from hardware kit #57 with $\frac{7}{16}$ " socket and wrench.



2958 and 2959 brackets

4. Mount bumper to frame mounts using bolts from Hardware Kit #80 and hand tighten bolts.
5. Align bumper to frame mounts until desired position is obtained and tighten fully to frame mounts.

Note: Align bumper a minimum of $\frac{1}{4}$ " below headlights. When truck flexes off-road, this distance allows your bumper and body to have clearance.



94-02 DODGE 1500-3500 FRONT

CONGRATULATIONS!!



(Hammerhead X-Series Winch Bumper shown. Your bumper's final appearance will differ slightly)