

2007-2017 Jeep Wrangler JK

FULL WIDTH NO BRUSHGUARD FRONT BUMPER INSTALLATION INSTRUCTIONS



SAFETY

Know safety, no injury. Know injury, no safety. ~Author Unknown

- **READ ALL SAFETY INSTRUCTIONS BEFORE INSTALLATION**
 - FOLLOW ALL INSTRUCTIONS FOR PROPER ASSEMBLY
 - WEAR APPROPRIATE EYE PROTECTION
 - EXERCISE CARE WHEN LIFTING COMPONENTS
 - USE APPROPRIATE TORQUE FOR BOLTS
 - BLUE THREAD LOCKING COMPOUND IS RECOMMENDED ON ALL BOLTS
 - CHECK TORQUE AFTER FIRST 100 MILES

If there are any questions, call 1-855-HHTOUGH



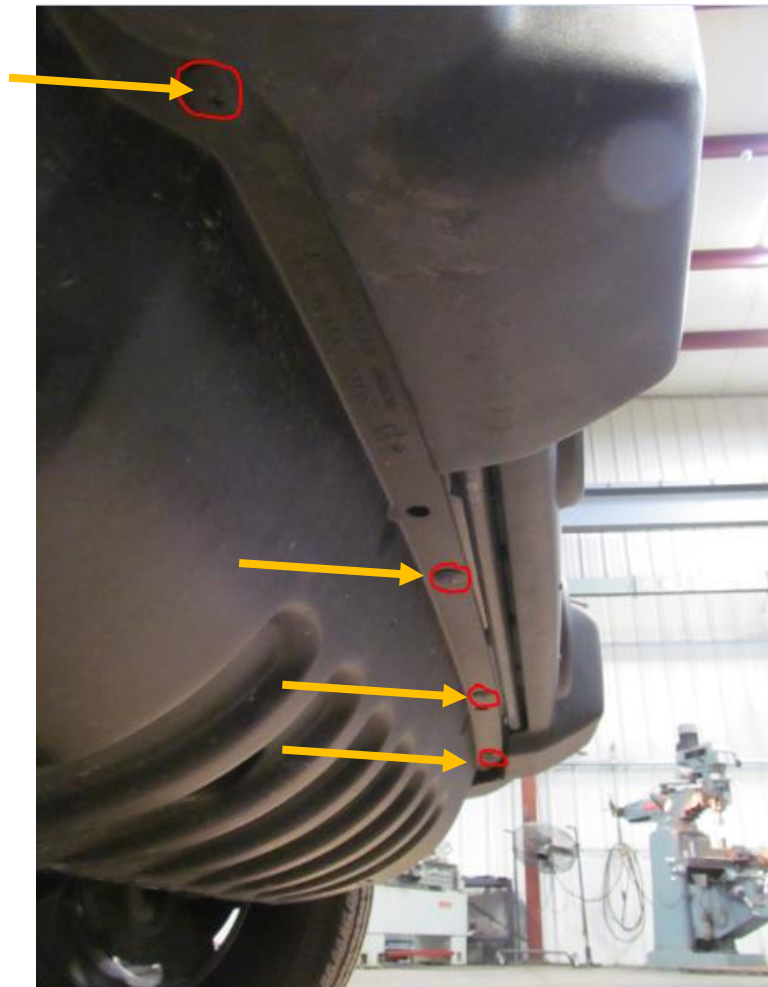
2007-2017 Jeep Wrangler JK Front Bumper

I. TOOL LIST

1. Phillips head screwdriver
2. 18mm socket
3. 18mm wrench
4. Ratchet
5. 3/4" socket
6. lighter

II. REMOVAL OF OEM BUMPER

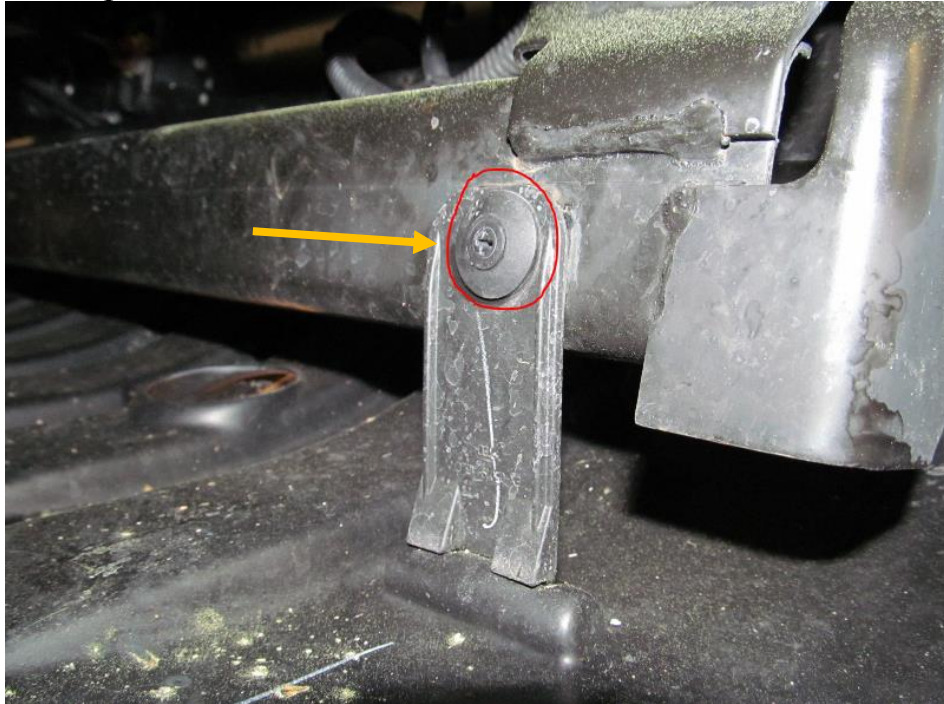
1. Using Phillips head screwdriver, remove 4 plastic clips from front of OEM "skid plate".





2007-2017 Jeep Wrangler JK Front Bumper

2. Using Phillips head screwdriver, remove 2 plastic clips from back of OEM “skid plate.”



3. Unplug OEM fog lights.



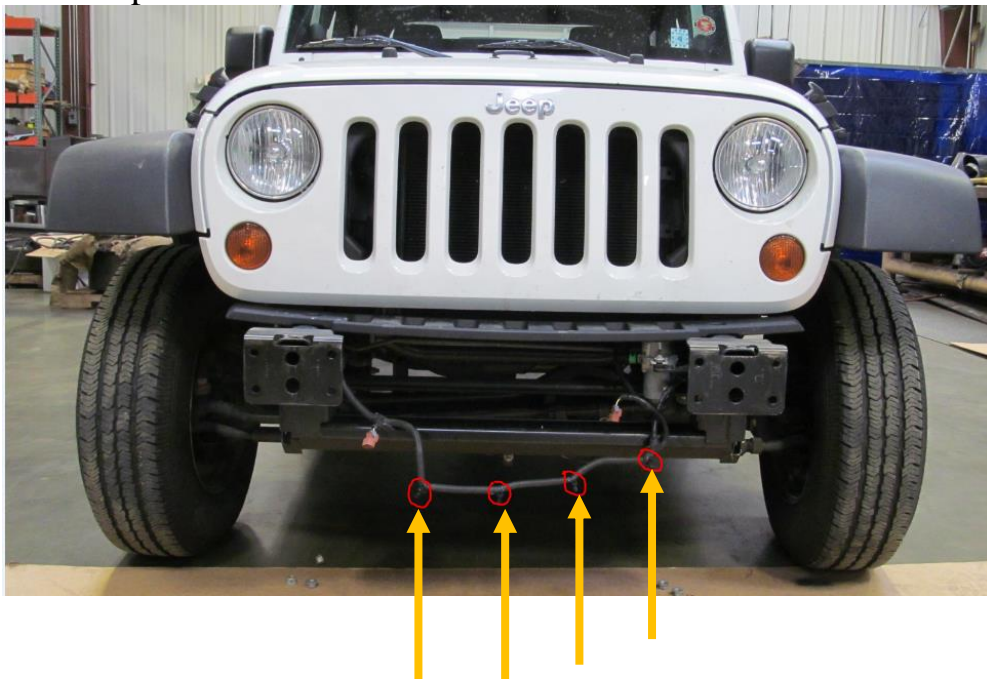


2007-2017 Jeep Wrangler JK Front Bumper

4. Using 18mm socket and ratchet, remove eight OEM bumper nuts. (4 per side)



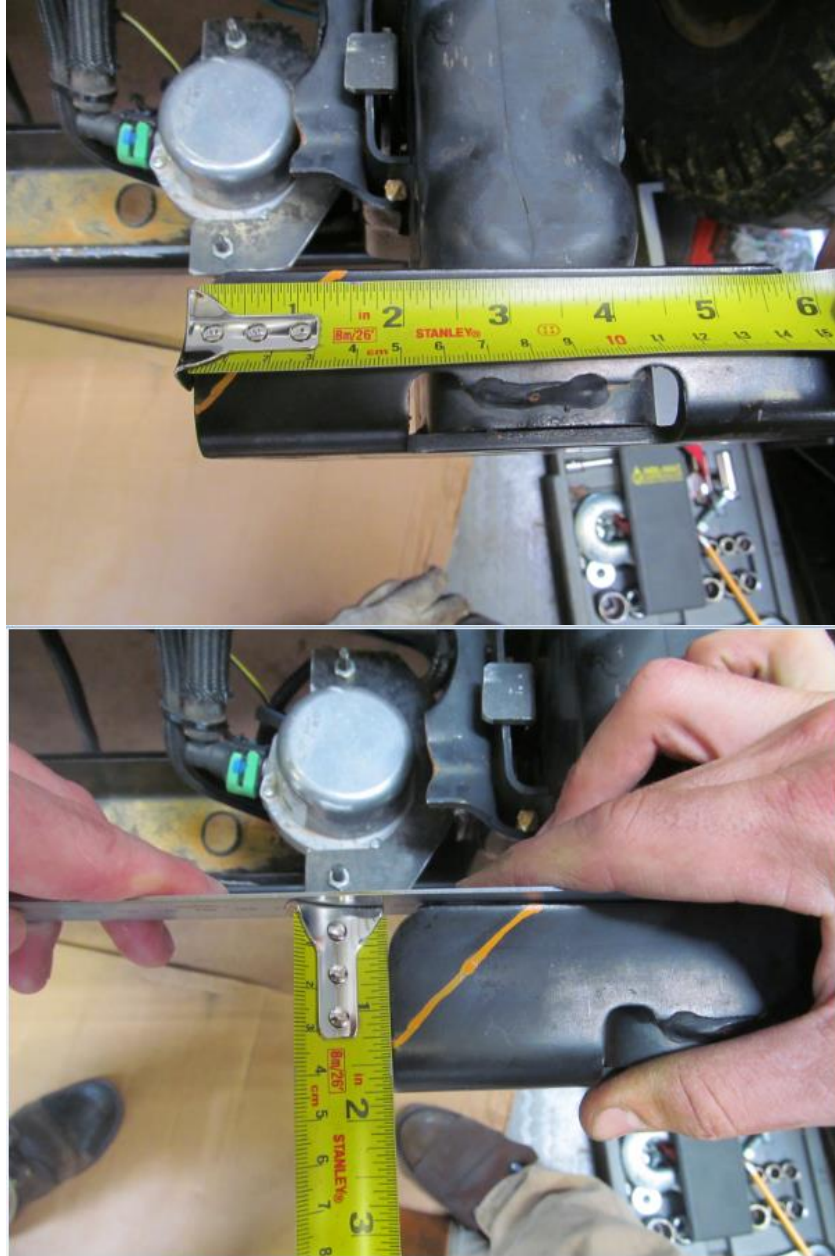
5. Pull bumper forward and remove OEM fog light clips from OEM bumper.





2007-2017 Jeep Wrangler JK Front Bumper

6. If you are using a Warn Zeon winch, the frame mounting flanges will need to be trimmed. Measure 1.25" from the edge of the flange and draw a line connecting the two points.





2007-2017 Jeep Wrangler JK Front Bumper

7. Cover the front of your Jeep and cut @ the lines you just marked.





2007-2017 Jeep Wrangler JK Front Bumper

8. If you are using a Warn Zeon winch, the vacuum pump will need to be relocated. Remove OEM nuts holding on vacuum pump and lower the vacuum pump. Do not remove any connections. Mark front of bracket 1" from frame (orange arrow). Cover front of Jeep and trim bracket. Install Hammerhead vacuum pump relocation bracket using supplied hardware.



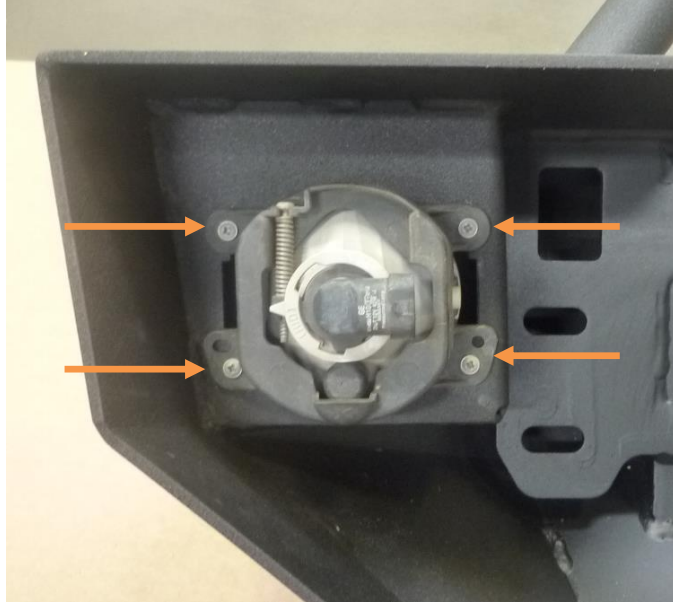


2007-2017 Jeep Wrangler JK Front Bumper

III. INSTALLATION OF HAMMERHEAD BUMPER

NOTE: Winch will install after bumper is attached to vehicle.

1. Install factory fog lights using factory Phillips head screws. (both sides)



2. Cut driver side OEM fog light plug 2 inches from the plug and splice in Hammerhead wiring extension



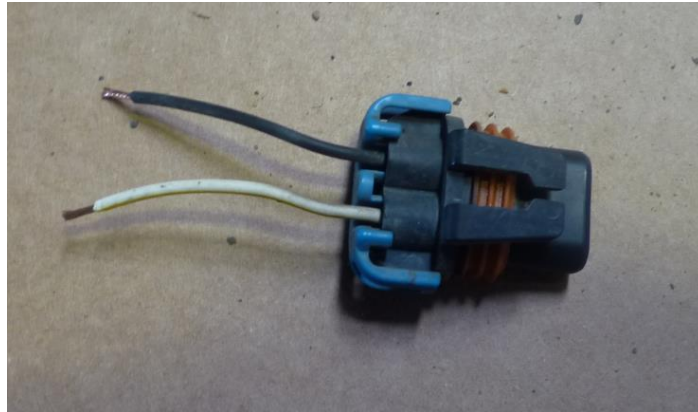


2007-2017 Jeep Wrangler JK Front Bumper



Wiring extension

4. Remove approximately 3/8" of insulation from end of OEM wiring harness and OEM plug.



Plug



Harness



2007-2017 Jeep Wrangler JK Front Bumper

5. Use lighter to shrink tubing after crimping connectors.



6. Install four $\frac{1}{2}$ "-13 x 1.5" carriage head bolts in bumper with push nuts. (both sides)





2007-2017 Jeep Wrangler JK Front Bumper

7. Install Hammerhead bumper and hand tighten bolts.
8. Align bumper and torque all bolts to spec.
9. Install winch at this time.



Congratulations! Your bumper installation is now complete.
Thank you for your purchase.