

## 2014-2015 GMC SIERRA 1500 LOW PRO, NO BRUSHGUARD

### FRONT BUMPER INSTALLATION INSTRUCTIONS



# SAFETY

**Know Safety, no injury. Know injury, no safety. ~Author Unknown**

If there are any questions, call 1-855-HHTOUGH

- **READ ALL SAFETY INSTRUCTIONS BEFORE INSTALLATION**
  - FOLLOW ALL INSTRUCTIONS FOR PROPER ASSEMBLY
  - WEAR APPROPRIATE EYE PROTECTION
  - EXERCISE CARE WHEN LIFTING COMPONENTS
  - USE APPROPRIATE TORQUE FOR BOLTS
  - BLUE THREAD LOCKING COMPOUND IS RECOMMENDED ON ALL BOLTS

#### **SUGGESTED TORQUE VALUES FOR STEEL GRADE SAE 5 BOLTS**

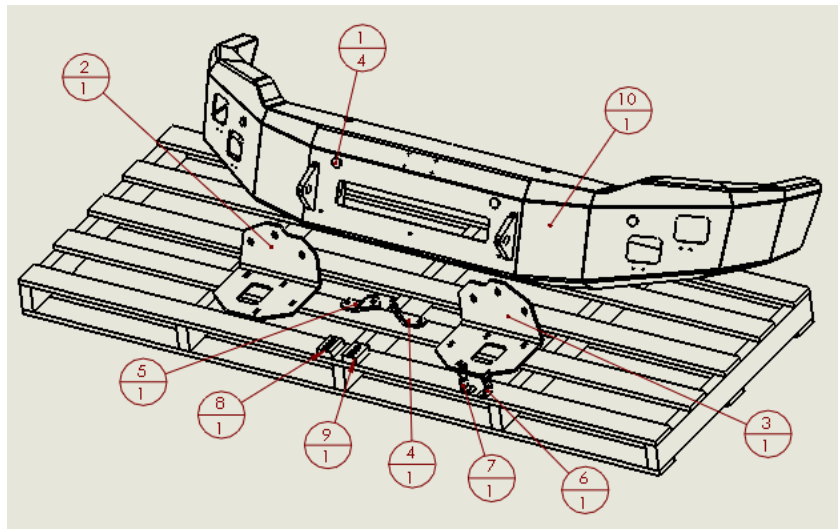
BOLT DIAMETER (INCH)	TREADS PER INCH	TORQUE (POUND-FEET)
1/4	20	7
5/16	18	14
3/8	16	25
7/16	14	40
1/2	13	60
9/16	12	88
5/8	11	120
3/4	10	200
7/8	9	302
1	8	466



600-56-0813

## I. PARTS LIST

ITEM NO.	QTY	PART NUMBER	DESCRIPTION	
1	4	316-01-0005	1.25" PLUG BT-FLUSH LDPE BLACK	-
2	1	601-56-2104	PAINTED PASS FRAME MOUNT	-
3	1	601-56-2105	PAINTED DRIVER FRAME MOUNT	-
4	1	601-56-2106	PAINTED PASS LOWER FRAME MOUNT	-
5	1	601-56-2107	PAINTED DRIVER LOWER FRAME MOUNT	-
6	1	601-56-2958	RIGHT BAR MOUNT	-
7	1	601-56-2959	LEFT BAR MOUNT	-
8	1	60K-56-0001	HARDWARE KIT #1	-
9	1	60K-56-0057	HARDWARE KIT #57	-
10	1	60P-56-0813	600-56-0813 POLISHED	-



**REMOVE CONTENTS FROM BOX AND VERIFY ALL PARTS ARE PRESENT.**

**If there are any questions, call 1-855 HHTOUGH or email [HHORDERS@hammerheadarmor.com](mailto:HHORDERS@hammerheadarmor.com)**

## II. TOOL LIST

1. A Good Friend
2. Basic Tool Kit
3. Blue Masking Tape
4. Trim Tool
5. 15mm socket
6. 15mm wrench
7. 18mm socket
8. 18mm wrench
9. 3/4" Socket
10. 3/4" Wrench
11. T15 Torx Bit
12. 7mm socket
13. Flathead Screwdriver

### III. VEHICLE PREPARATION

1. Park vehicle on level surface.
2. Engage parking brake and disconnect battery.
3. Using blue masking tape, mask along the profile of your truck above the bumper. This will help protect your truck from any accidental scratches.

### IV. REMOVAL OF OE BUMPER

1. Using a 7mm socket or a T15 Torx bit, remove 2 screws on bottom of OE fender flare. (both sides)



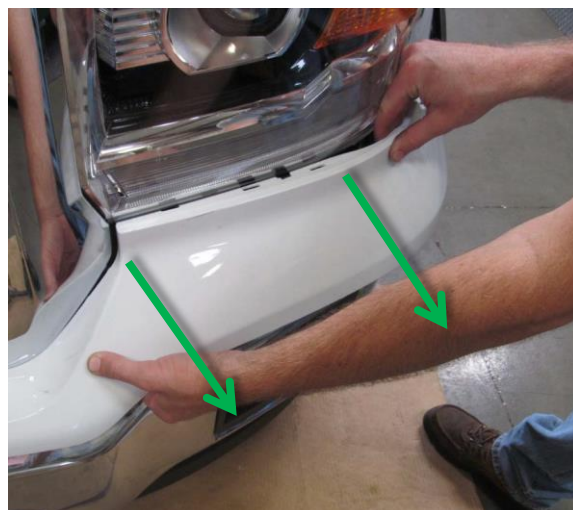
2. Gently pull the OE Fender flare away from the truck. (both sides)



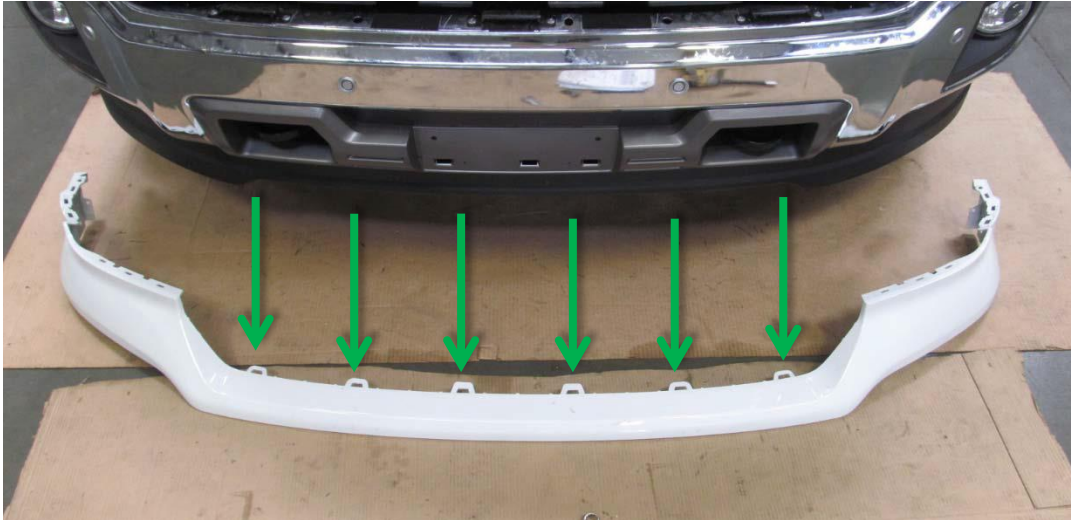
- Using a 7mm socket, remove the vertical screw that attaches the plastic trim piece. (both sides)



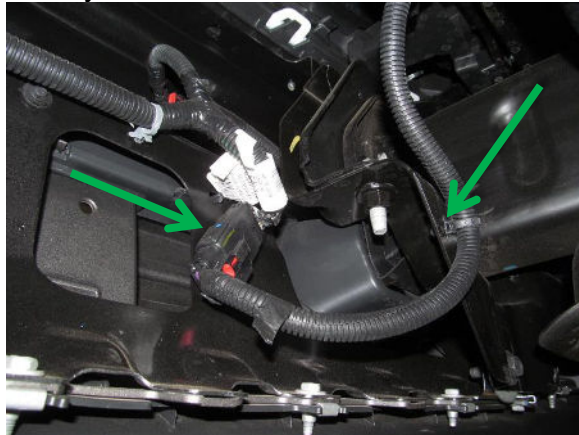
- Once all screws have been removed from both sides, pull out on the edge of the plastic trim to release the tabs. Pull in the direction of the arrows in the pictures below.



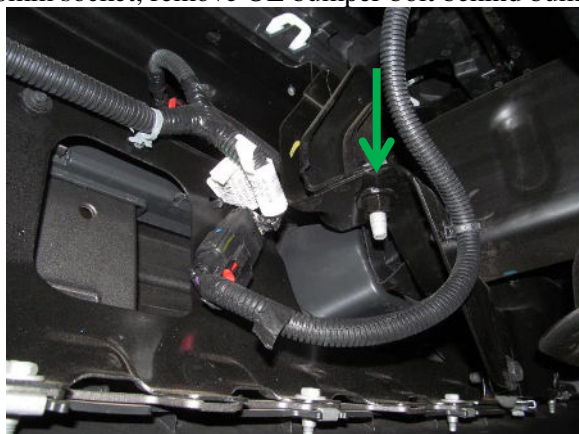
- Using a flathead screwdriver and the assistance of a friend, release the six tabs on the center of the plastic trim below the grill. Have a friend gently pull out on the plastic trim as you release the tabs behind the grill. Once removed, set the plastic trim aside, it will be reused.



- Unplug the OE fog light and sensor wiring harness and place it on top of the factory skid plate out of the way.

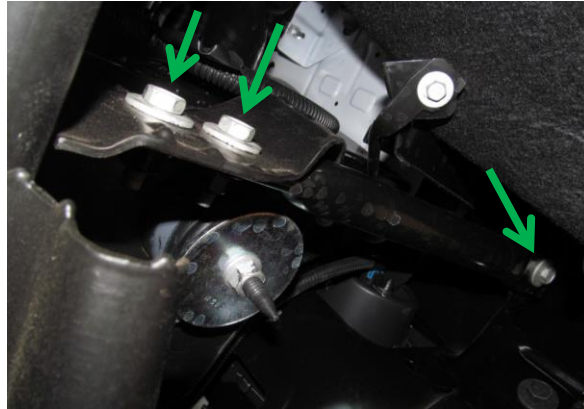


- Using an 18mm socket, remove OE bumper bolt behind bumper (both sides)

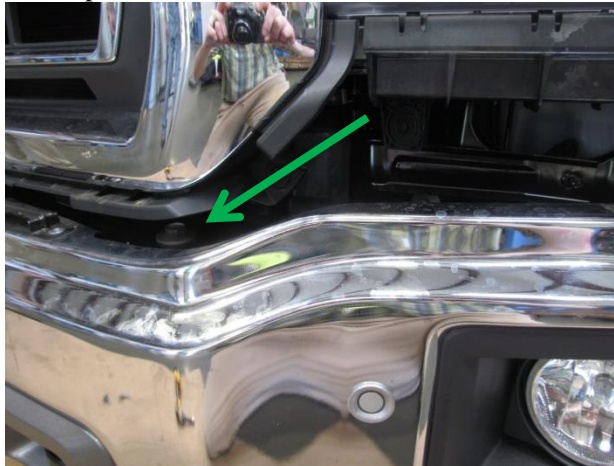




- Using a 15mm socket, remove three bolts from OE side bumper support (in front of the tires) (both sides)

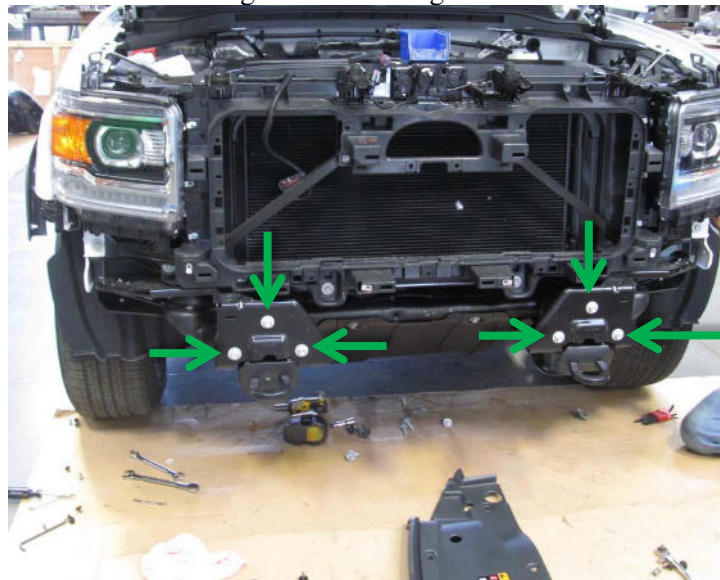


- Remove OE bumper bolt with 18mm wrench (both sides)



- Remove OE bumper and set aside

- Remove six bolts attaching OE frame flanges to frame with 15mm socket.



12. Remove two bolts attaching OE tow hooks to frame with 18mm socket and wrench. (both sides) Set tow hooks aside, they will not be reused.

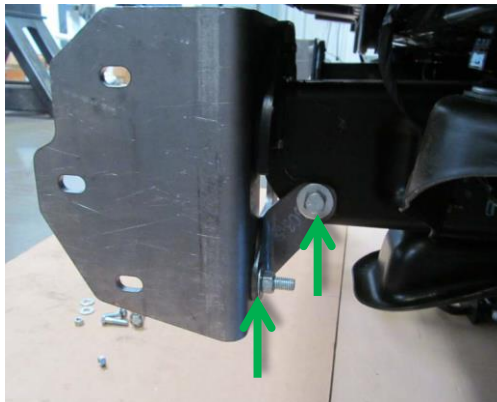


## V. INSTALLATION OF HAMMERHEAD BUMPER

1. Lay bumper face down on a carpeted surface or piece of cardboard. Install winch and all lights in bumper using brackets and hardware provided by light manufacturer.
2. Install Hammerhead frame mounts with OE hardware. Do not fully tighten.



3. Install Hammerhead lower frame mounts. Do not fully tighten. Use OE hardware for through frame bolt.



4. Reinstall OE plastic trim



5. Using a hoist or a few friends, attach bumper to frame mounts using hardware kit #1. Start all bolts before aligning bumper. Leave a minimum of 3/8" space between bumper and truck body. When the truck flexes off-road, this distance allows your bumper and truck body to have clearance. Tighten bolts with 3/4" socket and wrench. Tighten frame mount bolts at this time. Use suggested torque values from page one.



**Congratulations! Your Installation is now complete.  
Thank You for your purchase!**