

2019-20XX GMC SEIRRA 1500 LOW PRO

FRONT BUMPER INSTALLATION INSTRUCTIONS



SAFETY

Know Safety, no injury. Know injury, no safety. ~Author Unknown
If there are any questions, call 1-855-HHTOUGH

- **READ ALL SAFETY INSTRUCTIONS BEFORE INSTALLATION**
 - FOLLOW ALL INSTRUCTIONS FOR PROPER ASSEMBLY
 - WEAR APPROPRIATE EYE PROTECTION
 - EXERCISE CARE WHEN LIFTING COMPONENTS
 - USE APPROPRIATE TORQUE FOR BOLTS
 - BLUE THREAD LOCKING COMPOUND IS RECOMMENDED ON ALL BOLTS





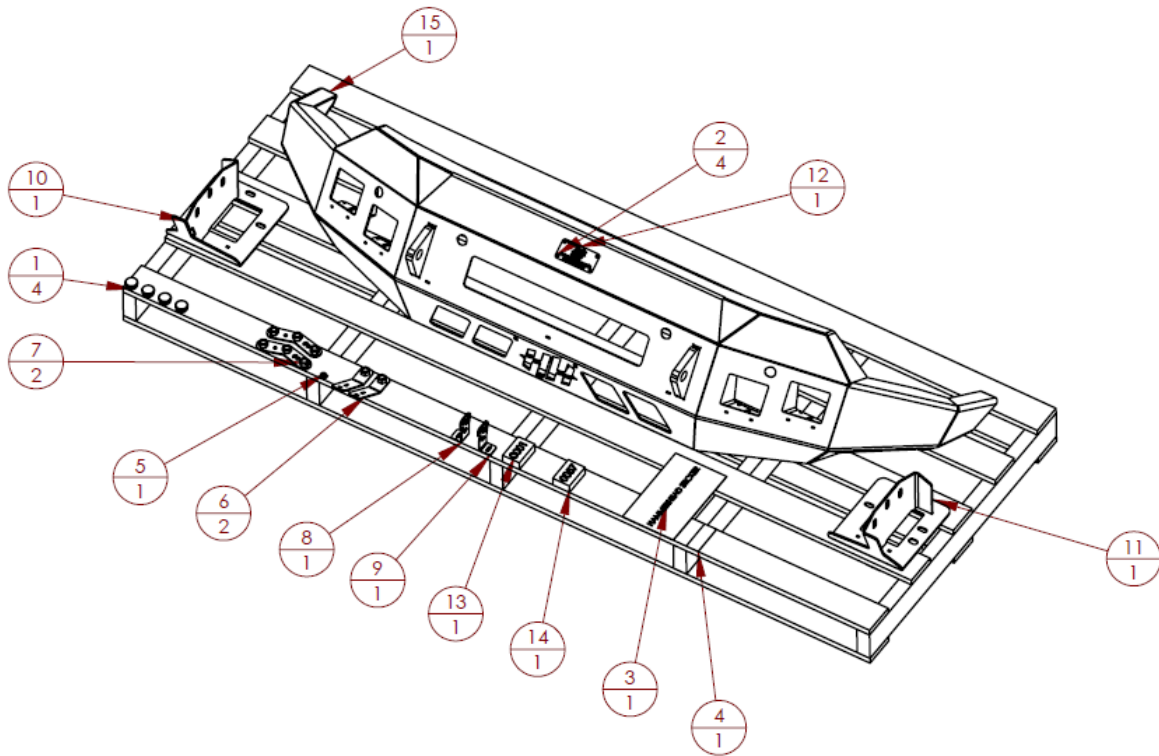
600-56-0998/0999/1000

| Suggested Torque Values For Steel Grade 5 Standard Bolts | | |
|---|------------------|-----------------------|
| BOLT DIAMETER (INCH) | THREADS PER INCH | TORQUE (POUND - FEET) |
| 1/4 | 20 | 7 |
| 5/16 | 18 | 14 |
| 3/8 | 16 | 25 |
| 7/16 | 14 | 40 |
| 1/2 | 13 | 60 |
| 9/16 | 12 | 88 |
| 5/8 | 11 | 120 |
| 3/4 | 10 | 200 |
| 7/8 | 9 | 302 |
| 1 | 8 | 466 |

| Suggested Torque Values For Steel Grade 8.8 Metric Bolts | | |
|---|-------------------|----------------------|
| BOLT DIAMETER (mm) | THREAD PITCH (mm) | TORQUE (POUND- FEET) |
| 6 | 1.0 | 7 |
| 8 | 1.25 | 16 |
| 10 | 1.5 | 32 |
| 12 | 1.75 | 55 |
| 14 | 2.0 | 88 |
| 16 | 2.0 | 140 |
| 18 | 2.5 | 195 |
| 20 | 2.5 | 275 |
| 22 | 2.5 | 375 |
| 24 | 3.0 | 475 |

I. PARTS LIST

| ITEM NO. | QTY. | PART NUMBER | DESCRIPTION |
|----------|------|-------------|--|
| 1 | 4 | 316-01-0005 | 1.25" PLUG BT-FLUSH LDPE BLACK |
| 2 | 4 | 318-12-0005 | 0.188" X 0.125" AL POP RIVET |
| 3 | 1 | 409-01-0125 | HAMMERHEAD STICKER |
| 4 | 1 | 409-01-0202 | DECAL PROP 65 CANCER AND REPRODUCTIVE HARM |
| 5 | 1 | 443-01-0086 | LICENSE PLATE MOUNTING KIT |
| 6 | 2 | 601-56-2498 | WELDNUT TAB 1 |
| 7 | 2 | 601-56-2868 | WELDNUT TAB 3 |
| 8 | 1 | 601-56-2958 | RIGHT BAR MOUNT |
| 9 | 1 | 601-56-2959 | LEFT BAR MOUNT |
| 10 | 1 | 601-56-5577 | R FRAME MOUNT WELDMENT |
| 11 | 1 | 601-56-5578 | L FRAME MOUNT WELDMENT |
| 12 | 1 | 601-56-9992 | BLACK HAMMERHEAD LABEL W/ HOLES |
| 13 | 1 | 60K-56-0001 | HARDWARE KIT #1 |
| 14 | 1 | 60K-56-0057 | HARDWARE KIT #57 |
| 15 | 1 | 60P-56-0998 | 600-56-0998 POLISHED |



*****BRUSHGUARD TYPE PICTURED MAY VARY FROM YOUR PURCHASE*****

REMOVE CONTENTS FROM BOX AND VERIFY ALL PARTS ARE PRESENT.

If there are any questions, call 1-855 HHTOUGH or email HHORDERS@hammerheadarmor.com

II. TOOL LIST

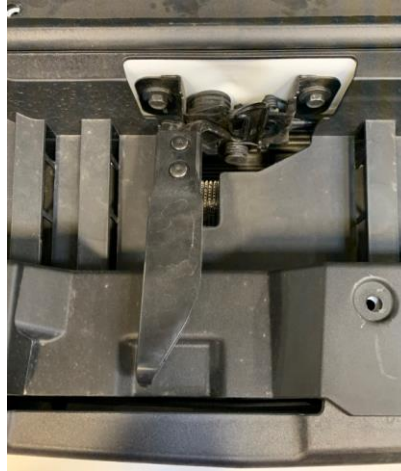
1. A Good Friend
2. Basic Tool Kit
3. Blue Masking Tape
4. Trim Tool
5. T15 torx
6. 7mm socket or wrench
7. 10mm socket or wrench
8. 15mm socket or wrench
9. 18mm socket or wrench
10. 10 inch extension
11. $\frac{3}{4}$ wrench or socket
12. $\frac{7}{16}$ " wrench or socket

III. VEHICLE PREPARATION

1. Park vehicle on level surface.
2. Engage parking brake and disconnect battery.
3. Using blue masking tape, mask along the profile of your truck above the bumper. This will help protect your truck from any accidental scratches.

IV. REMOVAL OF OE BUMPER

1. Open hood and use a T-15 torx to remove the (2) bolts attaching the hood latch extension to hood the hood latch. **DO NOT CLOSE HOOD AFTER THIS IS REMOVED!**



2. Using a trim tool, remove 10 push rivets from the air shroud. Remove and set aside. Reinstall hood latch extension in case the hood is accidentally shut.



- Using a trim tool, carefully pry out the fender flares until you can access the 7mm bolt shown. Remove bolt with 7mm (both sides).



- Using a T-15 torx, remove the bolts holding the inner fender to the front bumper and valence.



- Using a 10mm removed the (4) bolts holding the top of the grill in. Pull up on tabs to release



6. Pull out on the valence where clips into the fender. Work your way down the valence and across the front. Pull the grill forward and have a friend push down on the clips to release them out of the grill. As you can access them, unplug the fog lights and use a trim tool to remove the harness from the valence.



7. Using a 10mm, remove the (3) bolts holding the bottom of the grill in. Unplug the camera on the right side of the grill and remove the grill.



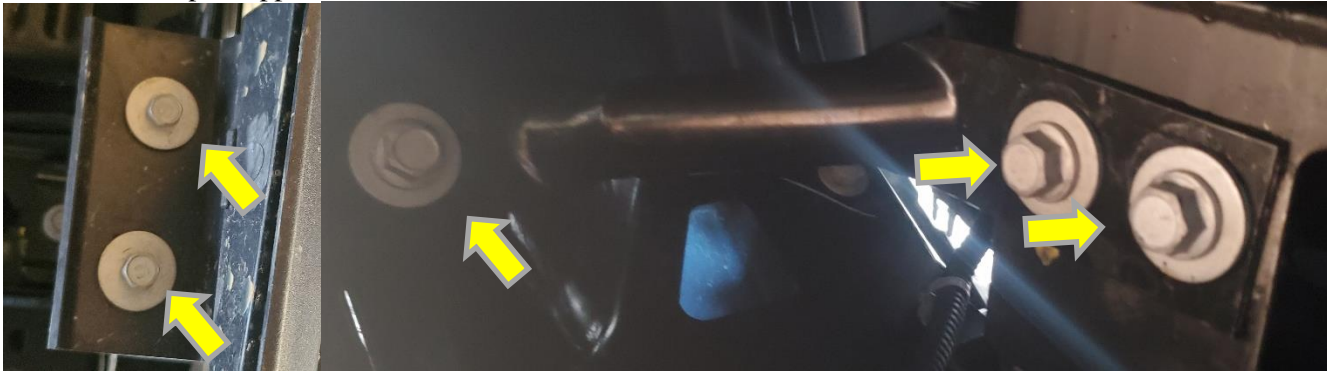
8. Unplug sensor harness (if applicable). It is located on the right side of the truck under the headlight.



9. Use a trim tool to remove the Christmas tree lower radiator shroud. The automatic louver plug is routed through it. Unplug it to remove the shroud then plug it back in.



10. Using a 10mm and 15mm, remove (6) bolts from the outer bumper supports and (4) bolts from inner bumper supports.



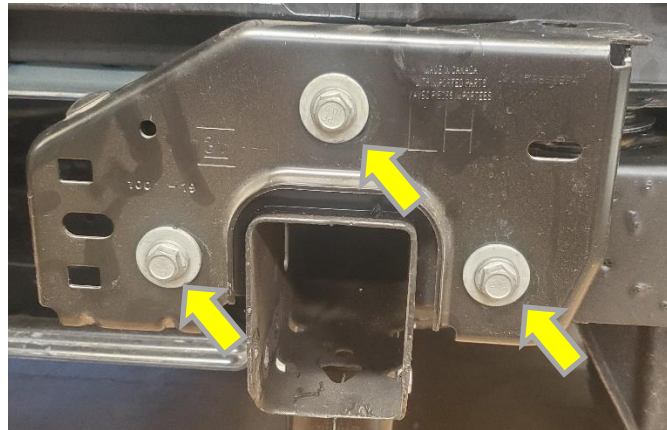
11. Using an 18mm and 10 inch extension, remove (4) bumper bolts from the top of the bumper. Remove bumper and set aside.



- Using an 18mm, remove (4) bolts holding the tow hooks in. Remove tow hooks and set aside.



- Using a 15mm socket, remove (6) bolts from the bumper mounts. Set hardware aside to be reused. Remove bumper mounts from truck.



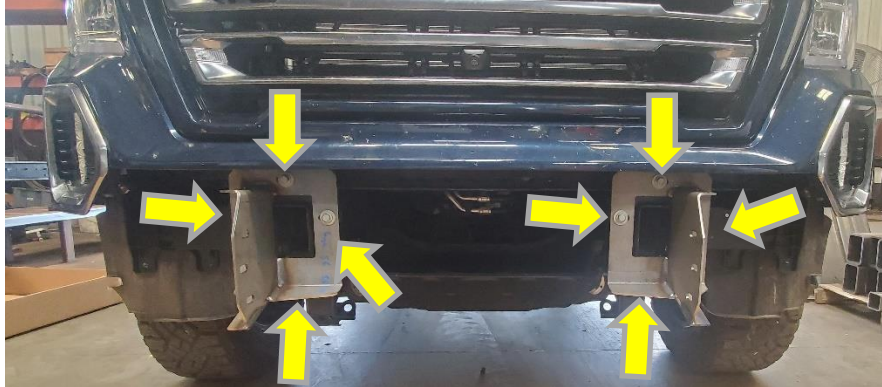
V. INSTALLATION OF HAMMERHEAD BUMPER

- Lay Hammerhead bumper on a carpeted surface. Install any lights, sensors, or other accessories into Hammerhead bumper at this time. Use supplied light bar mounts and hardware kit #57 to mount center light bar. Chose the hole that fits your light bar best.



- Reinstall grill, valence, air shroud, and hood latch extension.

3. Install frame mounts on to truck using OE hardware and a 15mm. Use (2) weld nut tab 1's and (2) bolts, (2) flat washers, and (2) lock washers from hardware kit #1 to bolt rear support to frame with a $\frac{3}{4}$ " wrench or socket. Do not tighten.



4. Layout hardware from hardware kit #1. Use (6) bolts, (6) flat washers, and (6) flat washers with (2) weld nut tab 3's.



5. Using a hoist or a few good friends, lift bumper into place and attach with (6) bolts, (6) flat washers, and (6) flat washers with (2) weld nut tab 3's. Leave **at least 3/8"** of space between the bumper and truck body before tightening with a $\frac{3}{4}$ " socket or wrench. When the truck flexes off road, this allows the bumper and body to have clearance. Align bumper front left to right and **tighten all frame mount at this time using a 15mm and $\frac{3}{4}$ " socket or wrench.**

Congratulations! Your Installation is now complete.

Thank You for your purchase!