



Preparation:

- Disconnect the negative battery terminal. Park the vehicle on level ground and set the emergency brake.
- We recommend reading through the installation instructions in whole before performing the work.
- Estimated Installation Time: **3 Hours for OEM Removal/Bumper Install**
 - 1 Additional Hour to Wire Center Lights
 - 1 Additional Hour to Wire Cube Lights

****This installation requires 2 people for best results****

****Labor Rates are based on a vehicle with no pre-existing damage. Wiring labor is based on a standard wiring procedure with light switches installed in an easily accessible location. Custom light triggering or switch mounting location will result in a greater labor charge.****

You will need the following tools:

- | | | |
|-----------------------------|-------------------------|-----------------------|
| - Ratchet | - 7mm Socket | - 10mm Socket |
| - 15mm Socket | - 17mm Socket | - 18mm Socket |
| - 7/32" Allen Wrench/Socket | - 9/16" Socket & Wrench | - 3/4 Socket & Wrench |
| - T-15 Torx Socket | | |

Included in Kit:

- | | |
|---|---------------------------------------|
| 4 - Hex Head Bolts (1/2"-20 x 4") | 10 - Hex Head Bolts (3/8"-16 x 1/4") |
| 8 - Flat Washers (1/2") | 10 - Fender Washers (3/8") |
| 4 - Metal Lock Nuts (1/2"-20) | 6 - Long Reach U-Nuts (3/8"-16) |
| 6 - Hex Head Bolts (M10-1.5 x 30mm) | 4 - Regular Length U-Nuts (3/8"-16) |
| 6 - Flat Washers (M10) | 2 - Skid Plate Mounting Brackets |
| 2 - Bumper Mounting Plates (Non-Winch Only) | 1 - Winch Mounting Plate (Winch Only) |
| 1 - Universal Light Mounting Kit | |

Removal:

1. Pop the truck's hood. Then, using a T-15 Torx Bit, remove the two bolts that hold on the hood latch handle. Remove that handle from the truck. (Fig A)

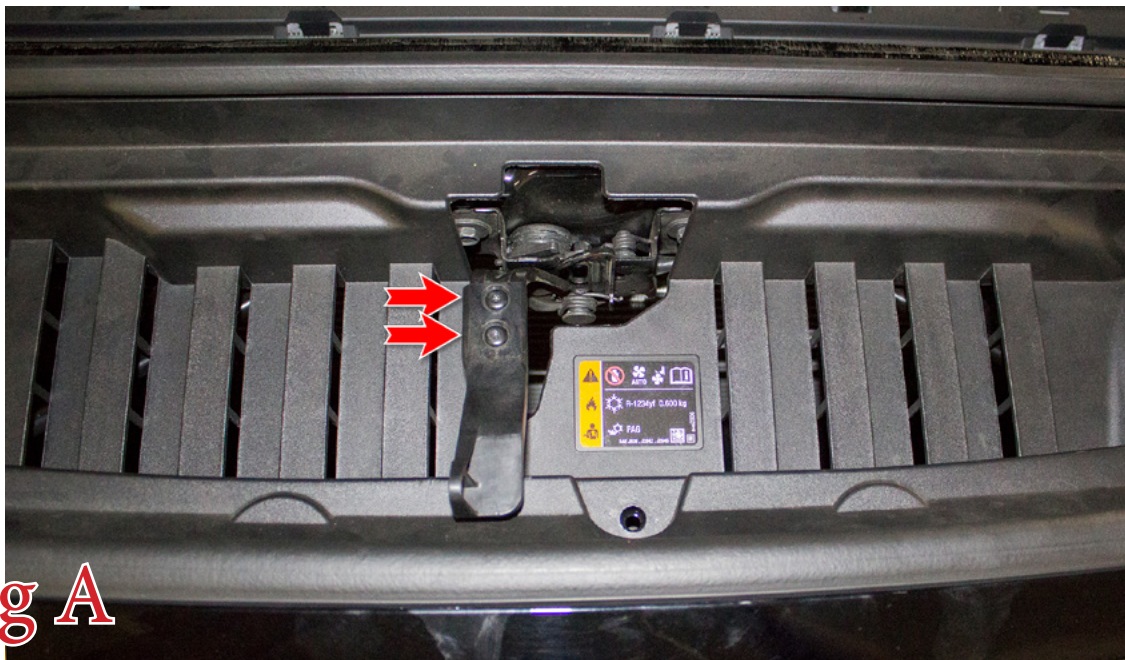


Fig A



2. Remove the 10 clips that hold on the radiator cover. Then, remove the radiator cover from the vehicle. (Fig B)

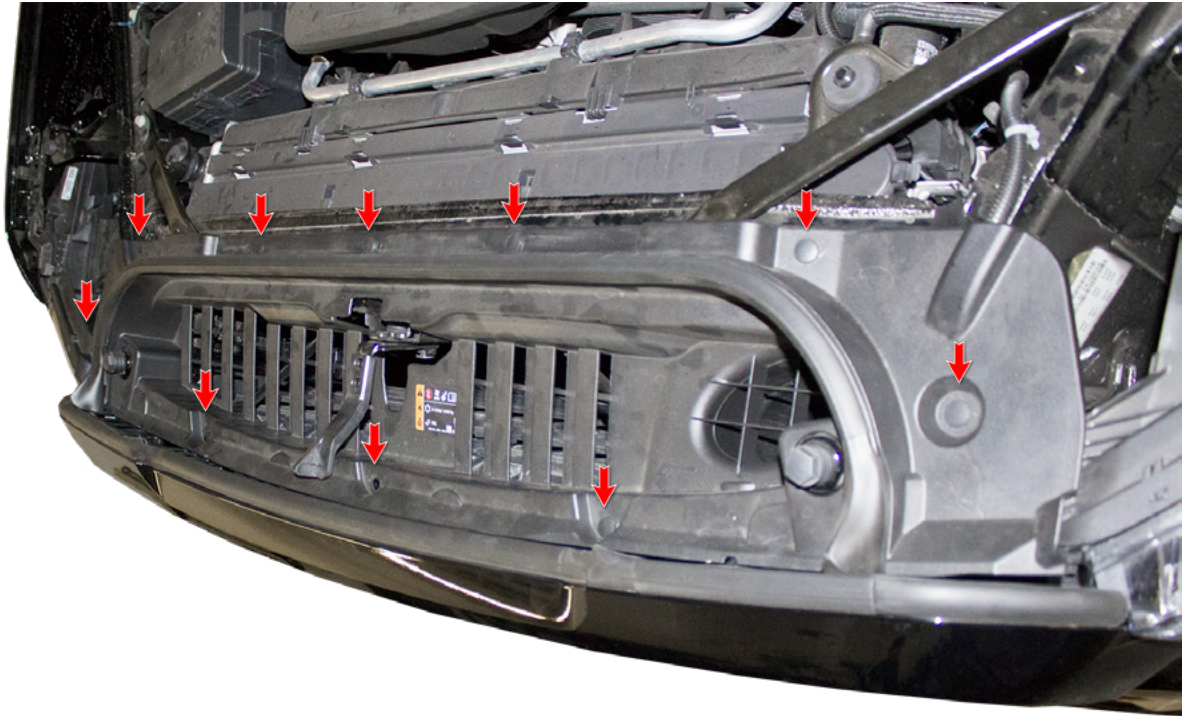


Fig B

3. Using a T-15 Torx Bit, remove the front two bolts in the wheel well. (Fig C)

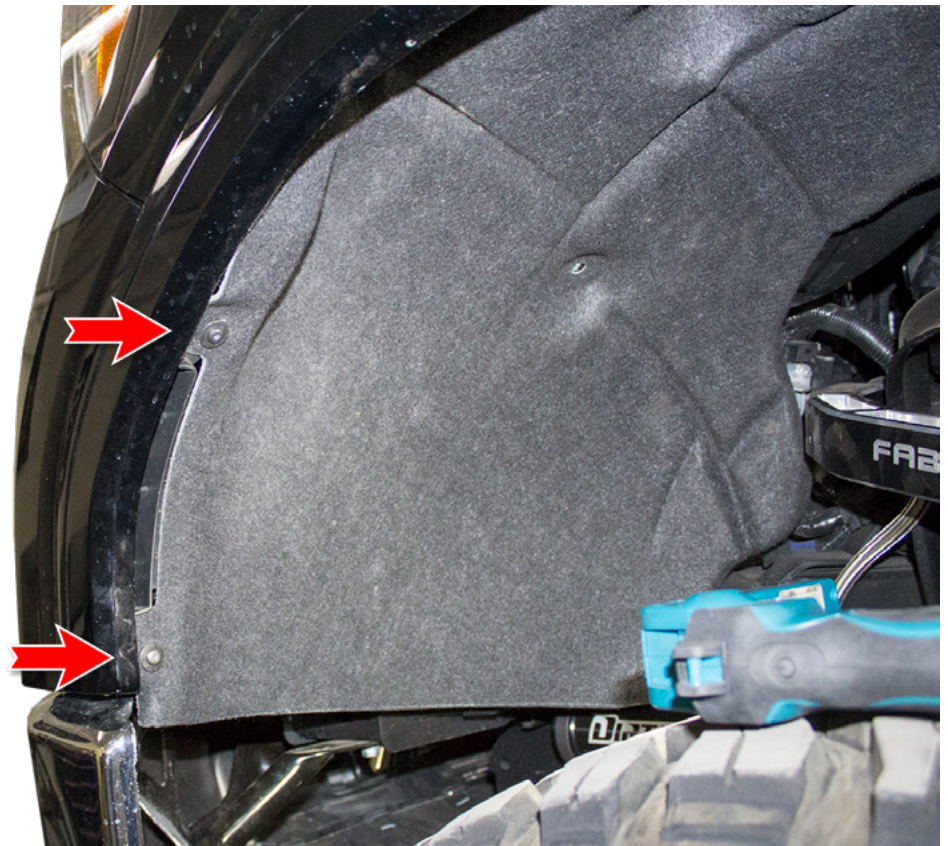


Fig C



- Carefully pull your fender flare back far enough to expose the 7mm Bolt shown in (Fig D). Then, remove that bolt.

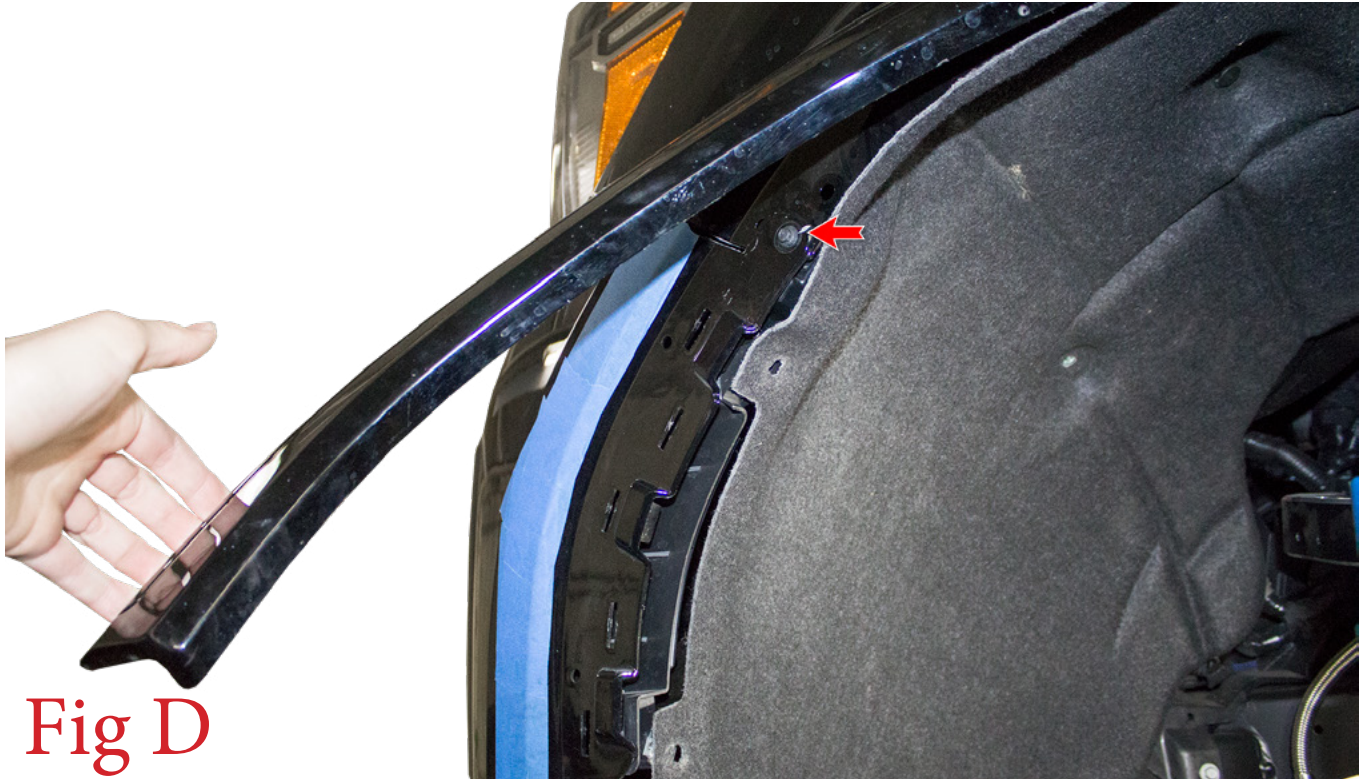


Fig D



5. Pull the inner fender liner back to gain access to the back side of where the fender and valance meet. Then, use a 7mm Socket, to remove the two bolts holding the valance to the fender. (Fig E)

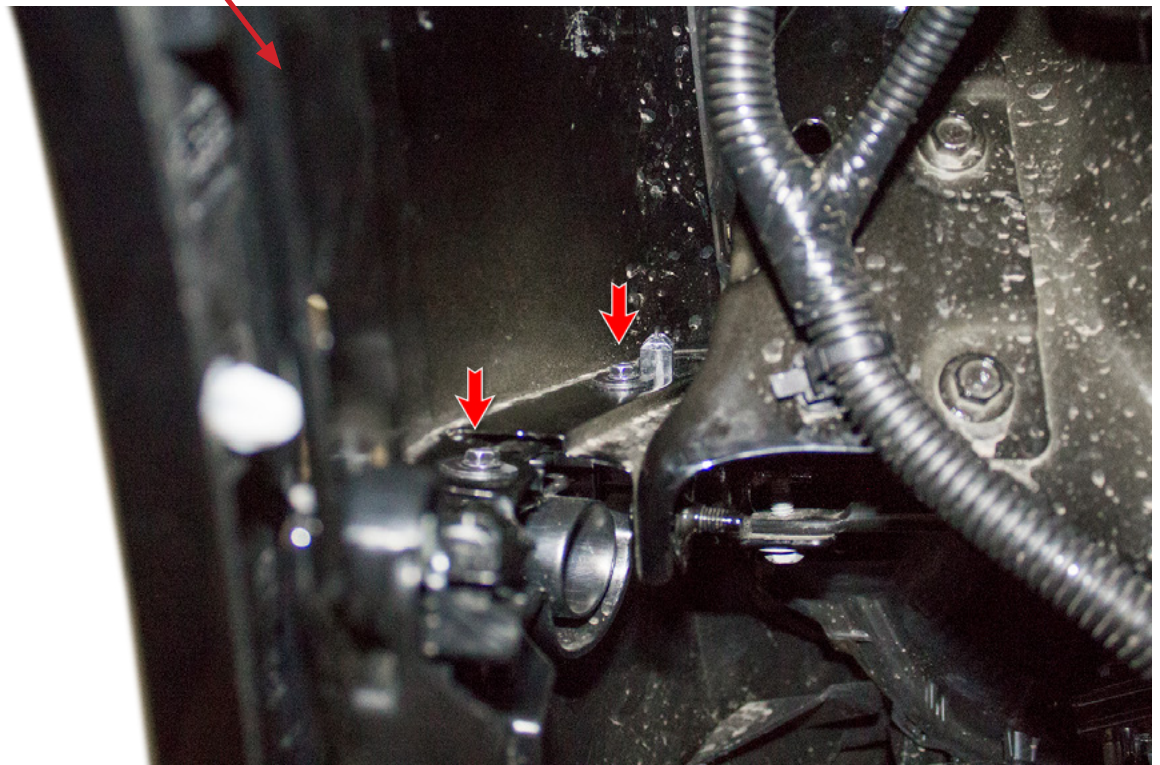


Fig E



6. Repeat Steps 3-5 on the other side of the vehicle.
7. There is a series of clips holding the valance on. Release these clips (you may have to access them from the back side) as you pull the valance off the vehicle. Your truck should now look like the truck in (Fig F).



Fig F

8. Using a 10mm Socket, remove the 3 grille mounting bolts. Then, remove the grille from the vehicle. (Fig G)



Fig G



9. Remove the series of plastic clips holding on the plastic shroud that sits just below the grille. Then, move that shroud out of the way enough to access the bumper bolts. You do not need to completely remove this shroud. (Fig H)

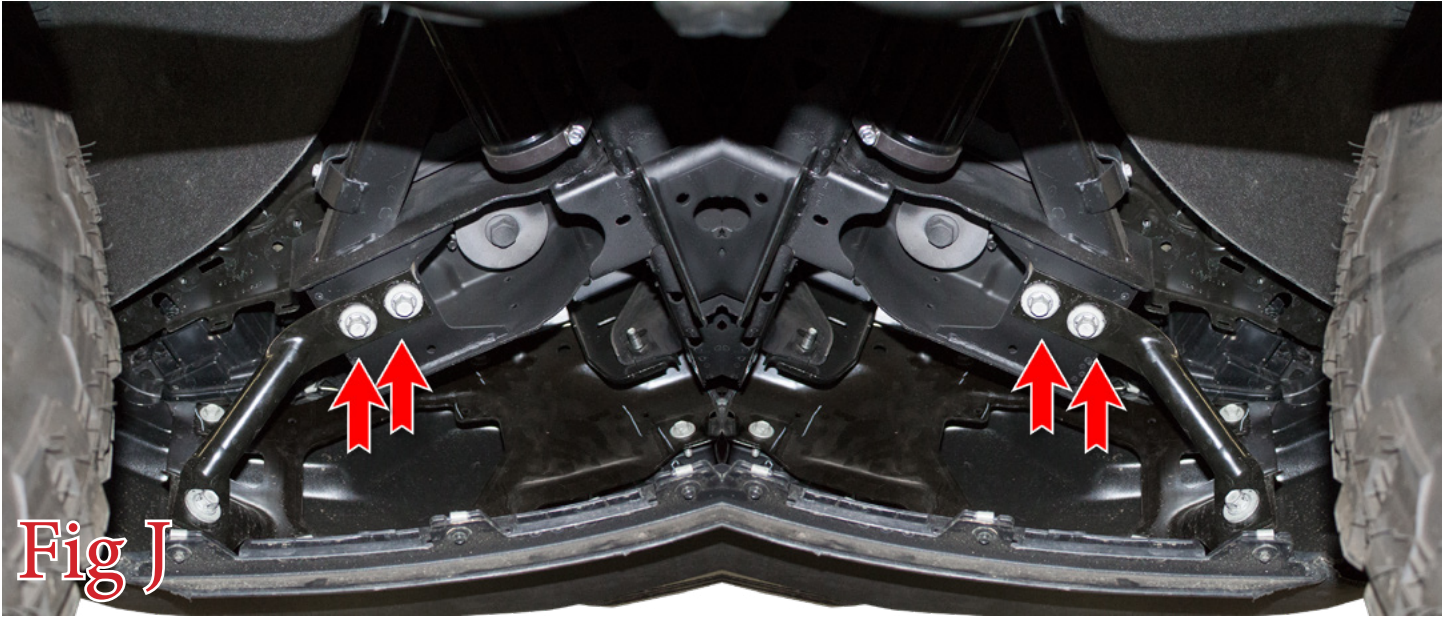


10. Using an 18mm Socket, remove the four vertical facing bumper mounting bolts. (Fig I)

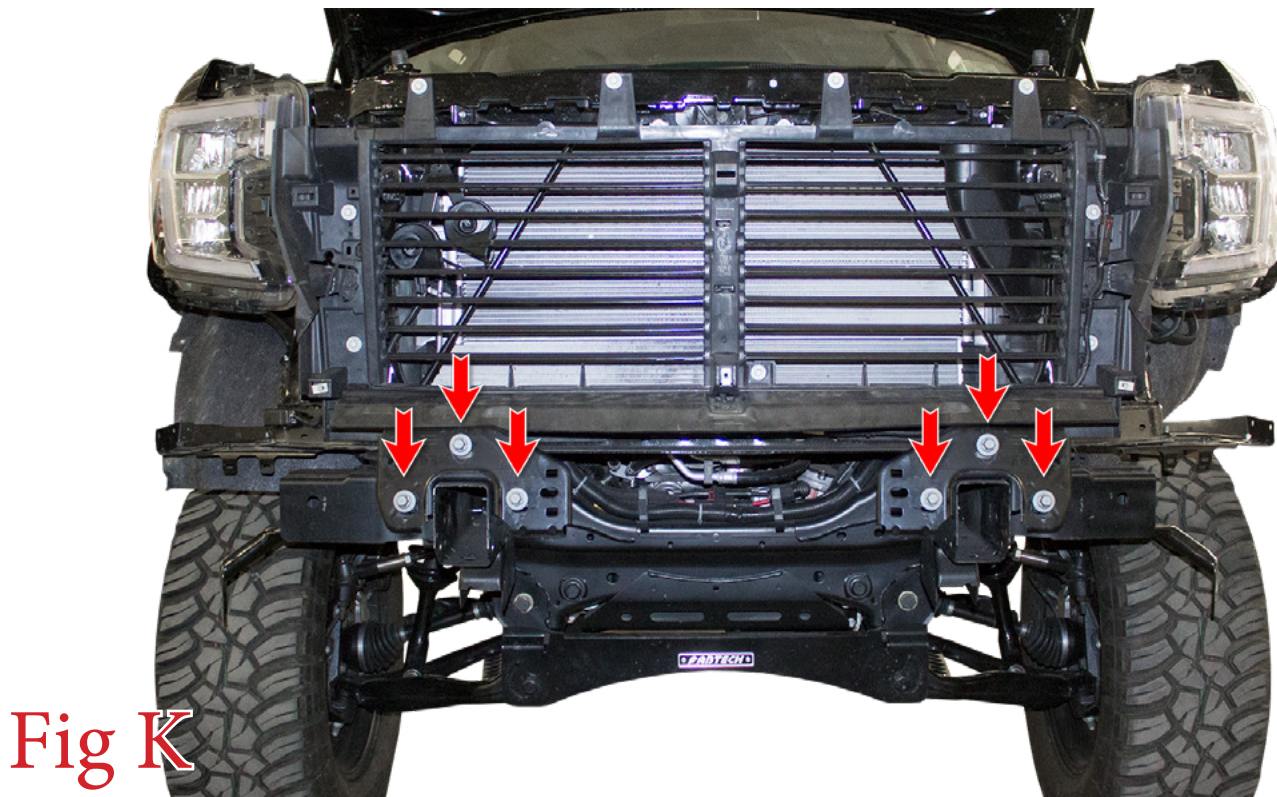




11. Underneath the truck, remove the two mounting bolts (per side) for the bumper side support bar (15mm Socket). Then, remove the OEM bumper from the vehicle. **Be sure to unplug the main bumper harness connector as you remove the bumper.** (Fig J)



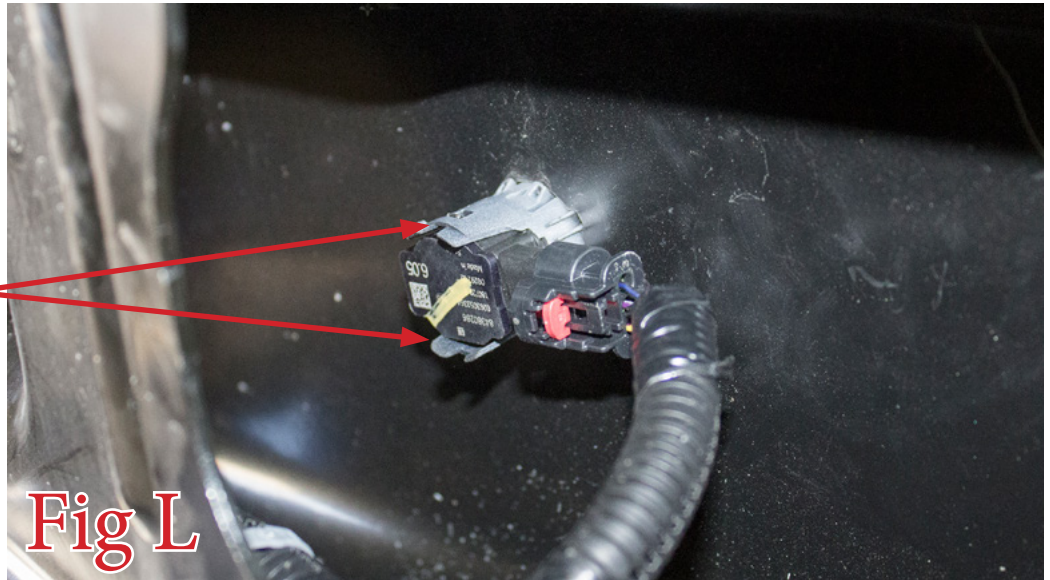
12. Using a 15mm Socket, remove the bumper bracket mounting bolts. Then, remove these brackets. (Fig K)





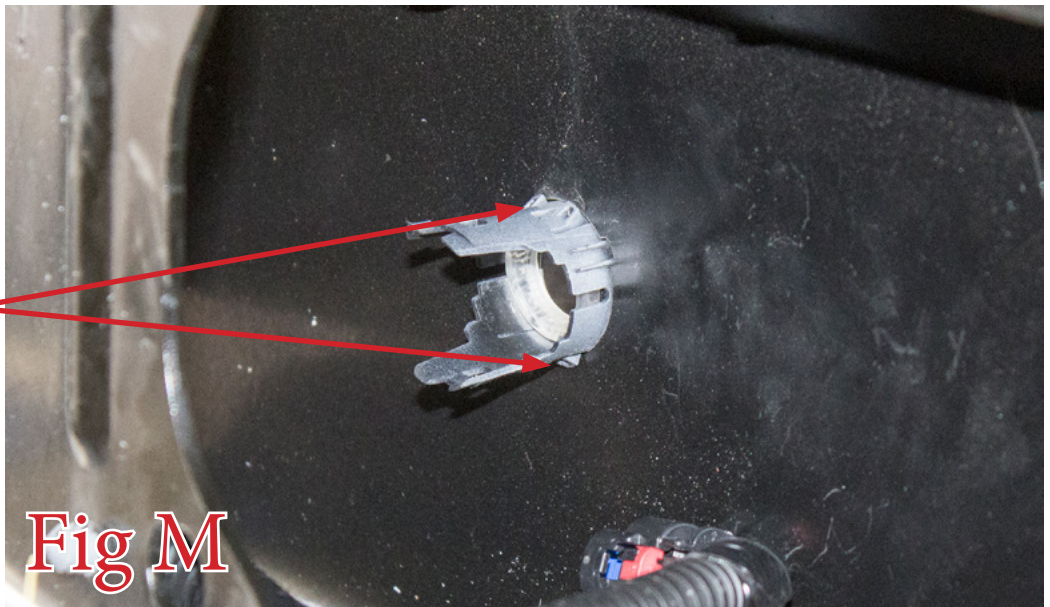
13. Remove the parking sensors from your OEM bumper. Do this by spreading the two tabs on the back side of the sensor mounting rings. Make sure to keep track of the position/orientation that these come off your OEM bumper so you can install them on your new bumper in the same position/orientation. (Fig L)

Spread these two tabs to release the sensor.



14. Remove the parking sensor mounting rings. Do this by squeezing the two tabs on the back side of the mounting ring and pushing that ring out the front side of the bumper. (Fig M)

Squeeze these two tabs to release the ring.



15. Reinstall your valance/grille by reversing Steps 1-9.



16. Remove the four mounting bolts (per side) that hold on the inner liner mounting bracket. Then, remove both these brackets from the vehicle. (Fig N)

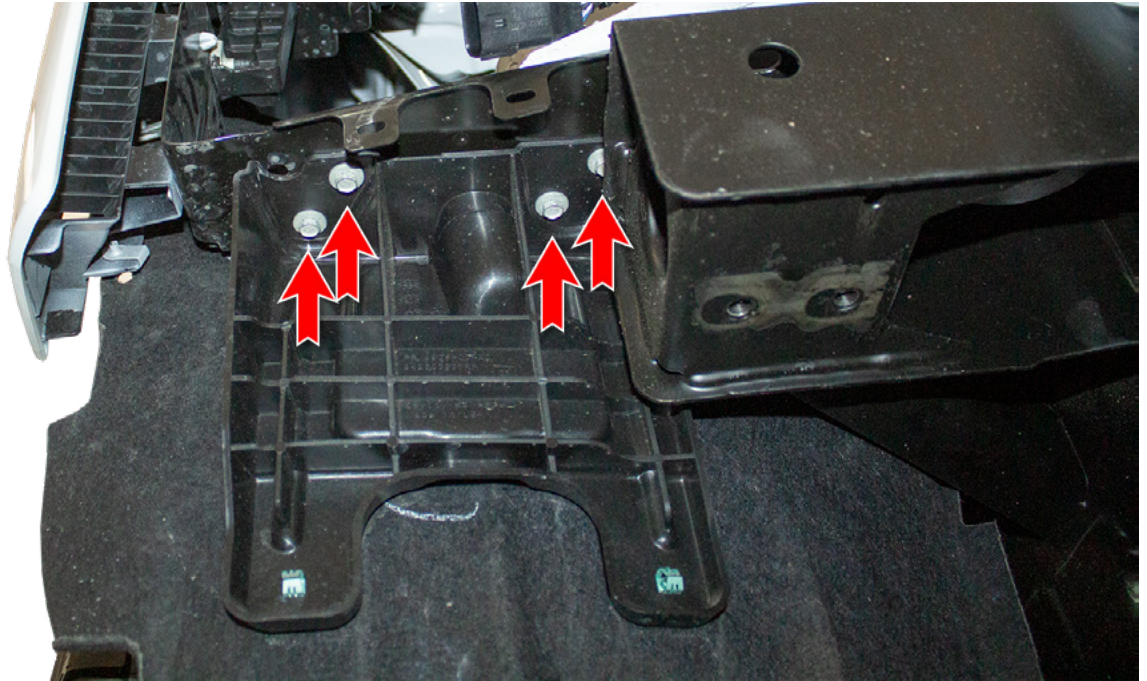


Fig N

Installation:

17. If you have any lights to install on your bumper, now is a good time to do so. Please use the supplied universal light mount kit to mount your center lights. Install guide can be found here: <https://www.addictivedesertdesigns.com/files/install/ADD-Universal-Light-Mount-Kit-Installation-Instructions.pdf>.

For all other lights and all wiring (including your center light) follow the light manufacturer's install guide.

18. Install the parking sensor mounting rings into your new bumper. Be sure to install them in the same position/orientation as they came off the OEM bumper. If the rings do not click into place, you may have to file the tabs down a little to allow for the thicker material of your new bumper. (Fig O)

You may have to file these surfaces back a little.

Then, push it into its precut hole in the bumper.

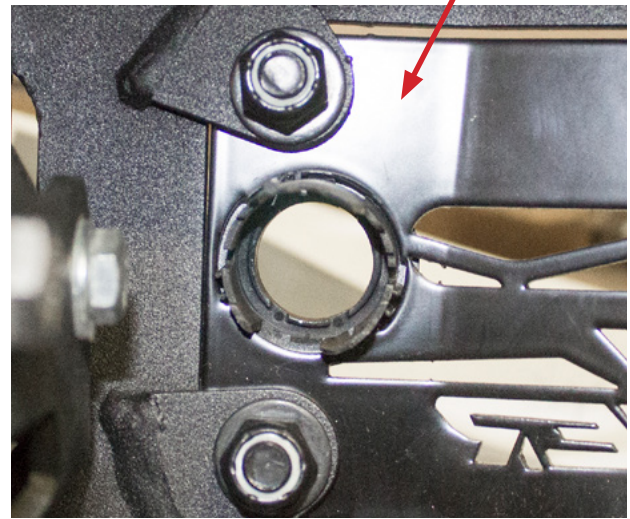
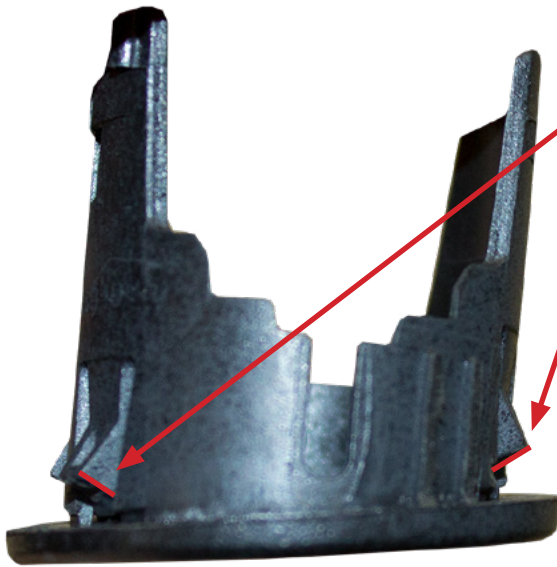


Fig O

19. Install the parking sensors by pressing them into the back side of the mounting rings until they click into place. Install all of the parking sensors with the connectors facing the outside of the bumper. (Fig P) Plug the harness in as you install the sensors and make sure to secure the harness out of harm's way with the main connector on the same side as it came off your OEM bumper.

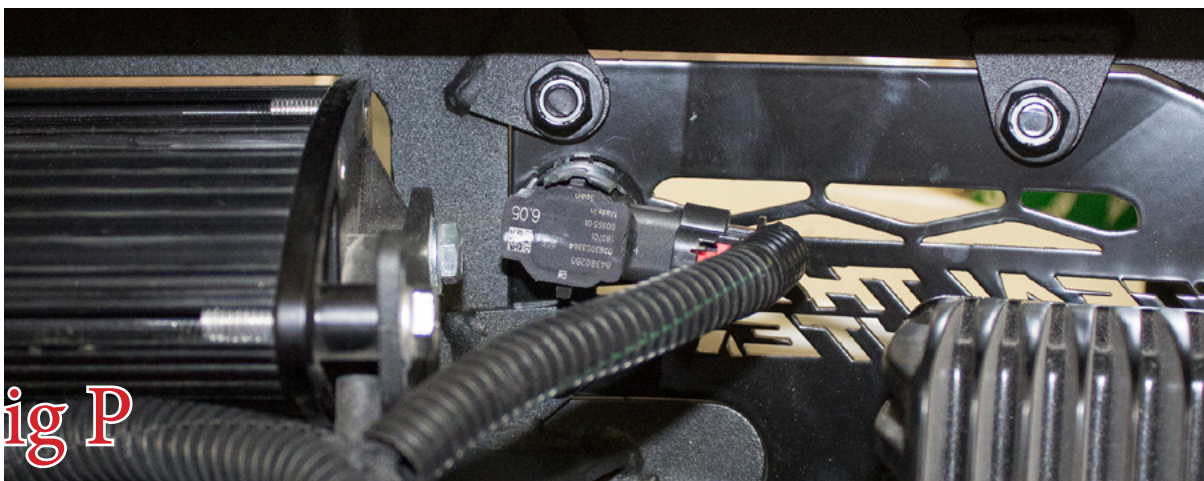
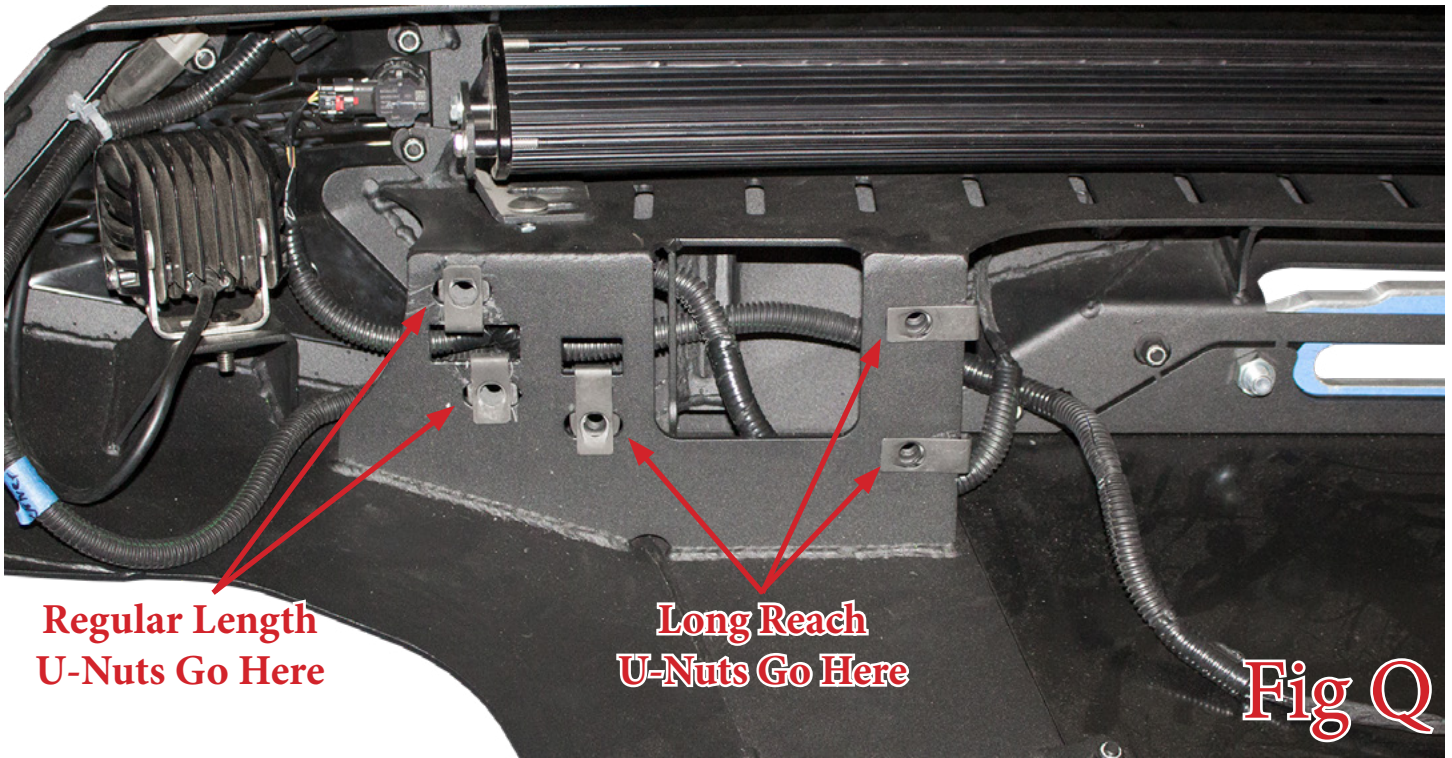


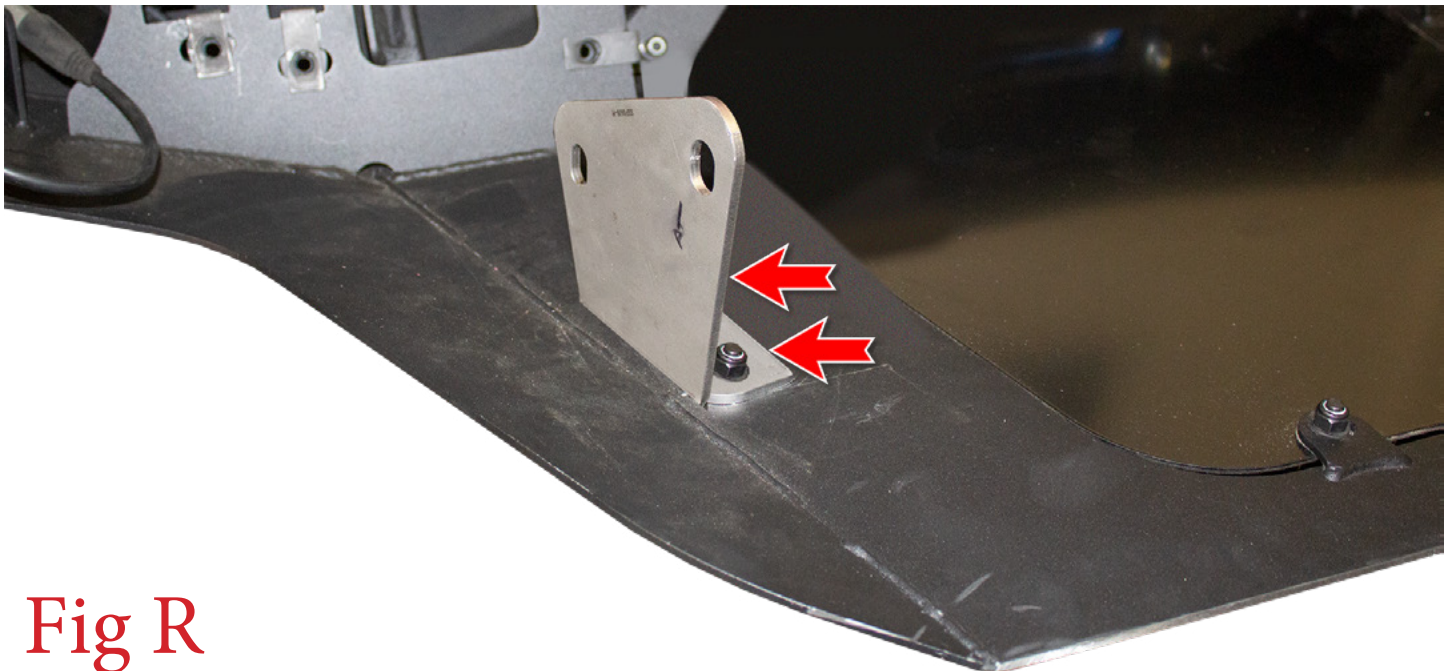
Fig P



20. Install the supplied U-Nuts onto the mounting plates of your new bumper. Each plate takes 3 Long Reach U-Nuts and 2 Regular Length U-Nuts. (Fig Q)



21. Mount the Skid Plate Mounting Brackets to the bumper's skid plate. Use the supplied 3/8" Bolts (2 per side), 3/8" Washers (2 per side), and 3/8 Lock Nuts (2 per side). Once the bolts are loosely installed, torque them to 30 foot pounds. (Fig R)





22. The bumper mounting brackets are different between the winch and non-winch versions of this bumper. If your bumper is a winch bumper, mount the winch plate to your frame horns. If your bumper is a non-winch bumper, mount the two bumper mounting plates to your frame horns. Use the supplied M10 Bolts (x6) and M10 Washers (x6) to secure the plates to your frame horns. Torque these bolts to the OEM torque spec. (Fig S)



Fig S

23. Bolt your winch to the winch plate using the hardware supplied with the winch. After the winch is bolted to the winch plate, you will have to follow the winch manufacturer's install guide for wiring and the rest of the mounting information. (Fig T)

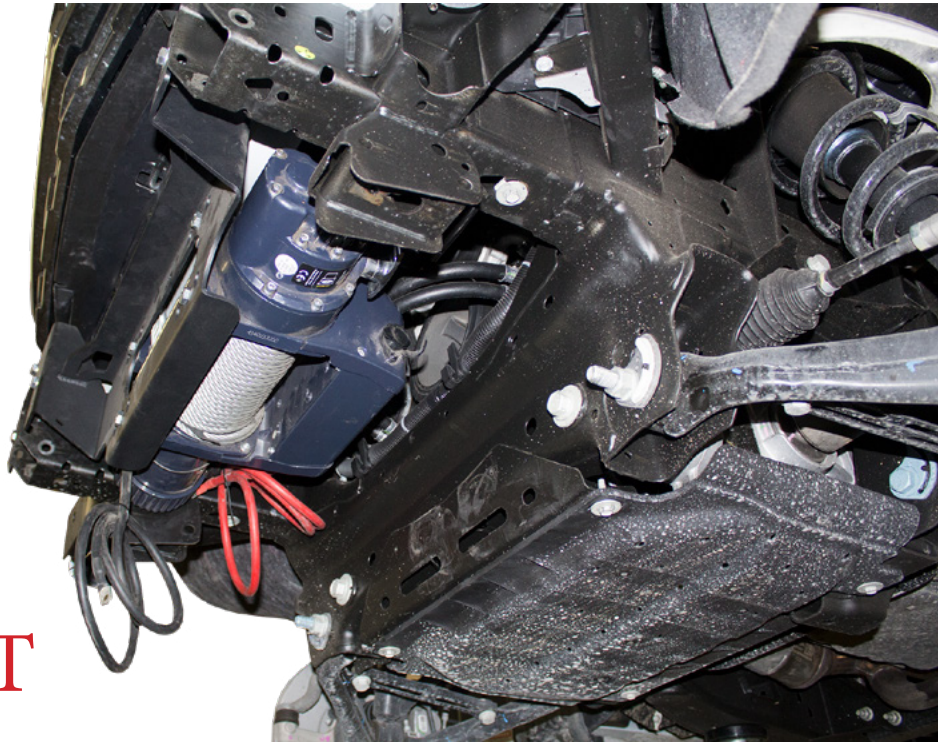


Fig T



24. Set the bumper in place on the vehicle. Install the supplied 3/8" Hex Head Bolts (x10) and 3/8" Fender Washers (x10) from the back side of the winch plate/mounting brackets into the newly installed U-Nuts. Leave these bolts loose for now. (Fig U)



Fig U

25. Install the supplied 1/2" Bolts (2 per side), 1/2" Washers (4 per side) and 1/2" Lock Nuts (2 per side) through the Skid Plate Mounting Brackets and into the brackets on the vehicle's frame rails as shown in (Fig V). Leave these bolts loose for now.



Fig V



26. Align the bumper so it sits straight in relation to the grille/valance and is centered left to right. Then, torque the 1/2" mounting bolts to 80 foot pounds and the 3/8" mounting bolts to 25 foot pounds.
27. Trim your inner fender liner to preference.
28. Stand back and enjoy your new ADD Stealth Fighter™ Front Bumper.
29. Check and re-tighten, if needed, all mounting bolts after 100 miles and periodically thereafter.

