

Preparation:

- Disconnect the negative battery terminal. Park the vehicle on level ground and set the emergency brake.
- We recommend reading through the installation instructions in whole before performing the work.
- Estimated Installation Time: **2 Hours**

*****This installation requires 2 people for best results*****

You will need the following tools:

- Ratchet
- 3/4" Socket & Wrench
- 15mm Socket
- Cutoff Wheel (Winch Model Only)
- 18mm Socket

Included in Kit:

- 16** - Hex Head Bolts (1/2-13 x 1 1/2")
- 16** - Nylon Lock Nuts (1/2"-13)
- 32** - Flat Washers (1/2")
- 2** - Bumper Mounting Brackets

Removal:

1. Unplug the main fog light harness connector. This connector is located along the driver side frame rail underneath the truck. (Fig A)

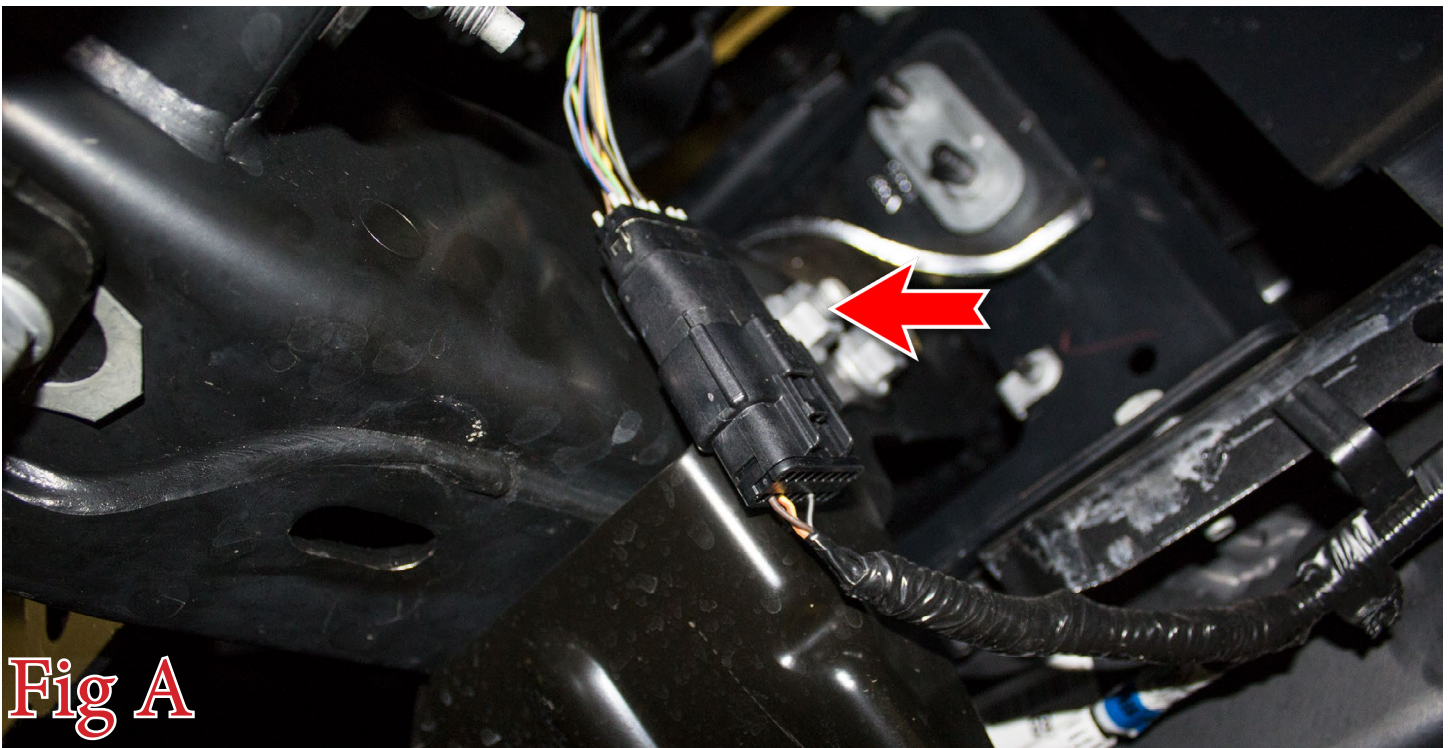


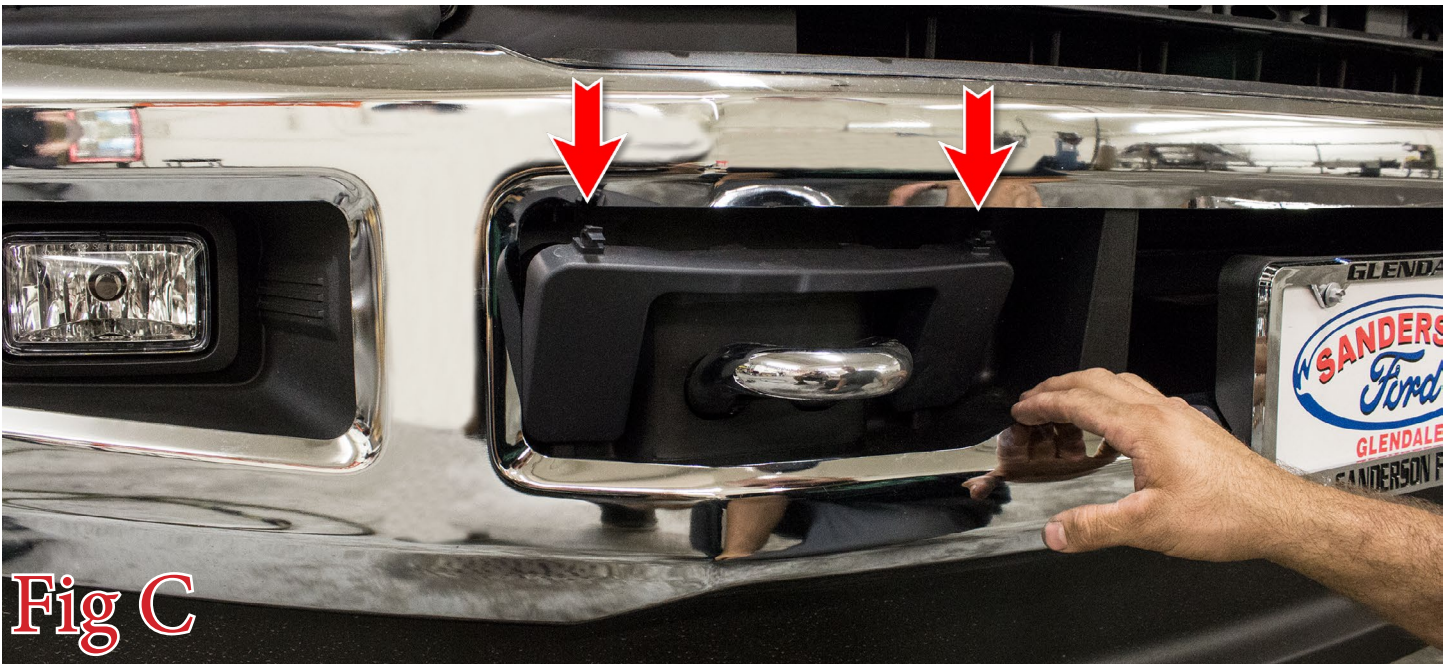
Fig A



2. Use a 15mm Socket to remove the two bolts (per side) that secure the OEM bumper side supports. These bolts can be seen when looking into the wheel well, towards the front of the truck. Save these bolts for reuse. (Fig B)



3. Remove the two plastic covers that sit around the tow hooks by unclipping the two top clips that hold them on. (Fig C)

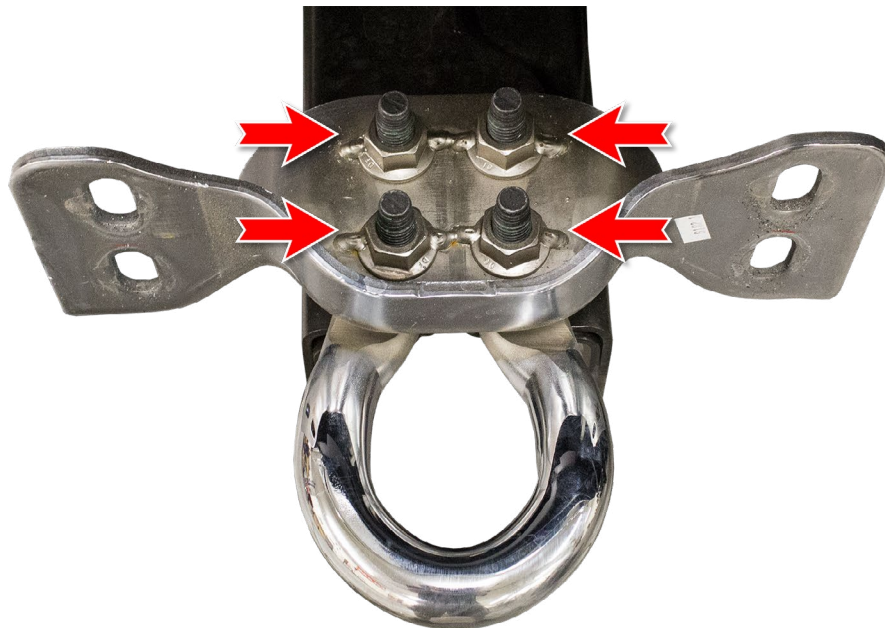




4. Use an 18mm Socket to remove the OEM bumper mounting bolts (4 per side) that are visible after removing the two plastic covers. (Fig D)



5. Remove the OEM Bumper.
6. Use an 18mm to remove the tow hook mounting bolts (4 per side), then remove the tow hooks. (Fig E)



7. Use an 18mm Socket to remove the mounting nuts (4 per side) for the lower brackets on each frame rail. Then, remove these brackets. Save these bolts for reuse. (Fig F)

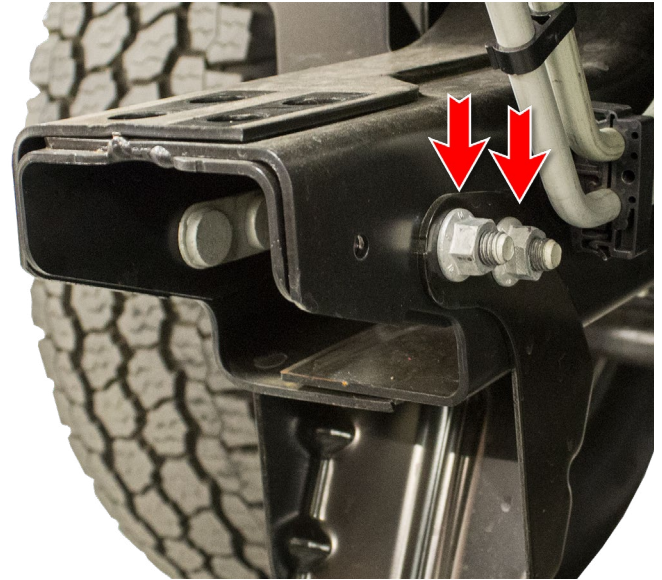
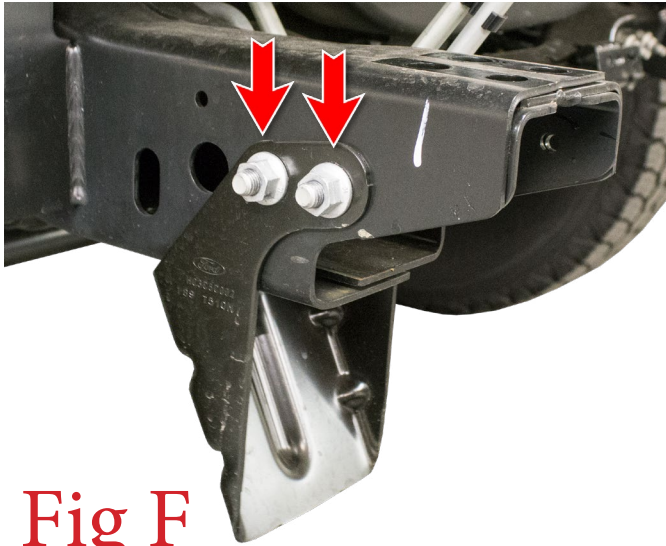


Fig F

Installation:

8. If you purchased lights or a winch, now is a good time to install those on your bumper. Please follow the light/winch manufacturer's installation instructions for mounting/wiring information.
9. Set the supplied Bumper Mounting Brackets in place. Then, secure them using the bolts you saved in Steps 2 and 7. Also, use the supplied 1/2" Bolts (x4), 1/2" Washers (x8), and 1/2" Lock Nuts (x4) per side. Once all bolts have been installed, go back and torque the factory bolts to factory torque specs, and torque the supplied 1/2" bolts to 70 foot pounds. (Fig G)

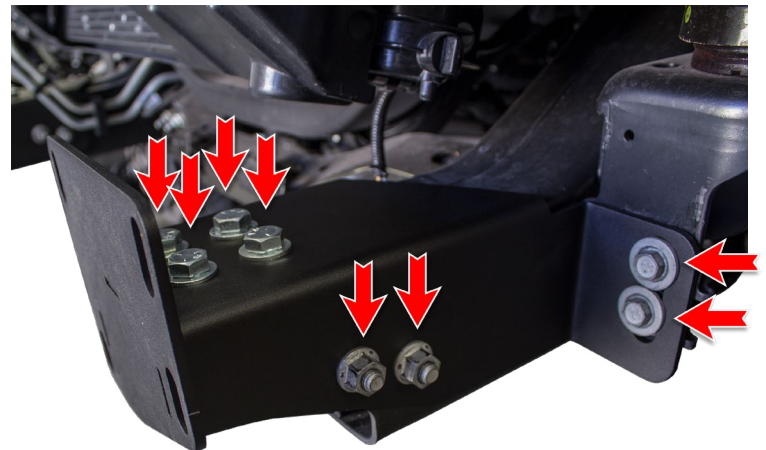


Fig G



10. If you are installing a winch on your bumper, you may have to trim the lower plastic piece that sits beneath the grille. You will have to hold your bumper up against the truck to see if and where your winch will contact this plastic. (Fig H) shows a possible cut line.



Fig H

11. Line the mounting holes on the back of your new bumper up with the mounting holes on your newly installed Bumper Mounting Brackets. Then, loosely install the supplied 1/2" Bolts (x8), 1/2" Washers (x16), and 1/2" Lock Nuts (x8). (Fig I)

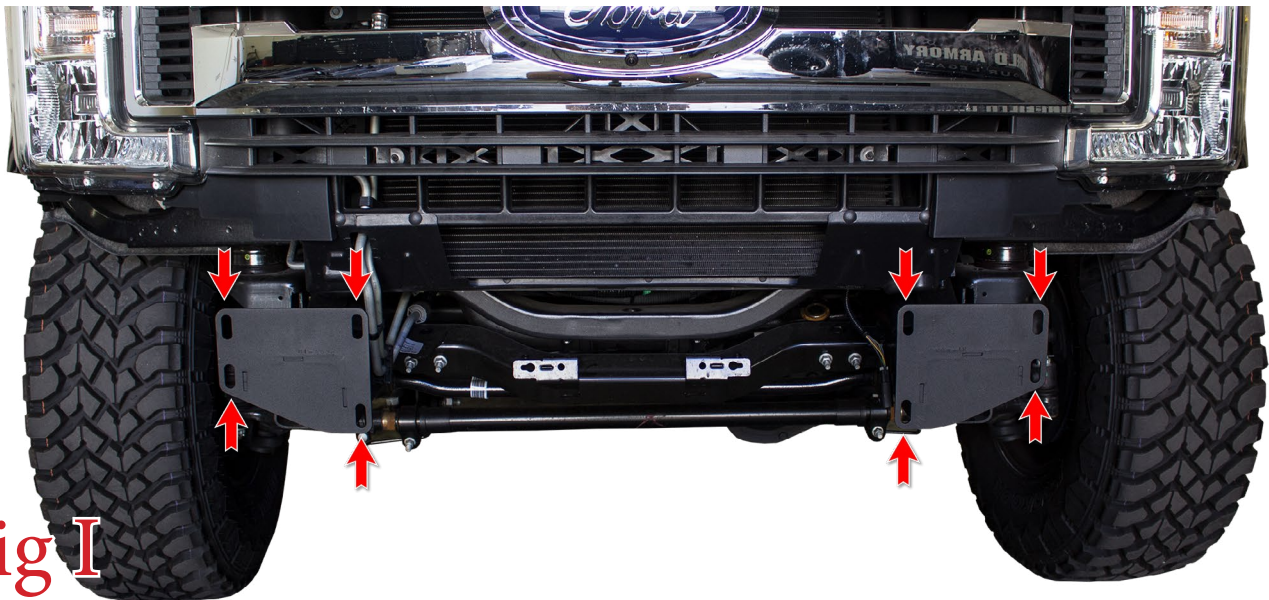


Fig I

12. Align your new bumper so it sits straight in relation to the grille/headlights and is centered left to right. Then, tighten the bumper mounting bolts to 70 foot pounds.

13. Stand back and enjoy your new HoneyBadger® Front Bumper.

14. Check, and re-tighten if needed, all mounting bolts after 100 miles and periodically thereafter.

