

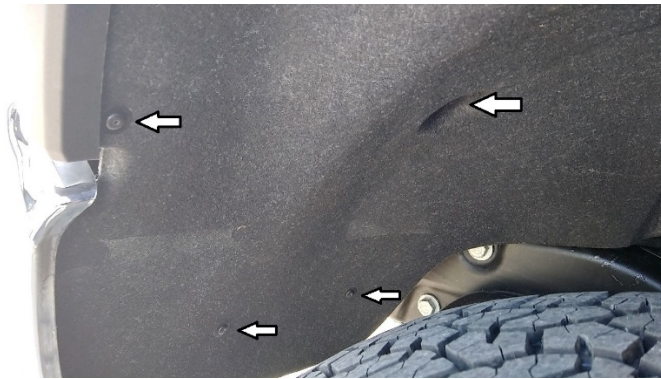


RANCH HAND
PROTECT YOUR TRUCK
1-800-366-9712

INSTALLATION INSTRUCTIONS

2020+ CHEVROLET 2500HD / 3500HD FRONT BUMPER REPLACEMENTS PART #s FBC201BLR / FBC201BLRC / BTC201BLR FSC201BL1 / FSC201BL1C / BSC201BL1

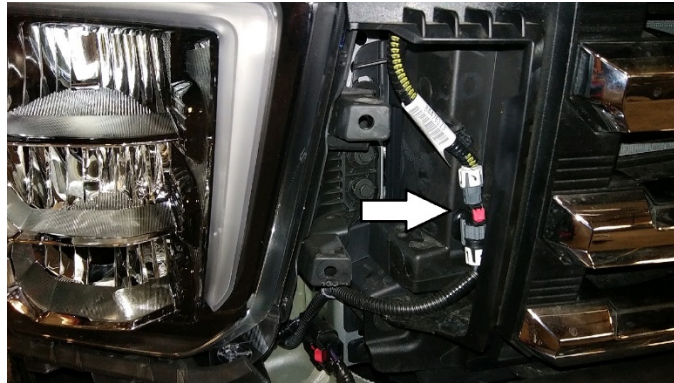
1. To remove the factory bumper, you will need to remove the factory grille. You will need to remove the side panels first. Start by removing the inner fender well screws. This will allow you to get to the back side of the plastic clips. There will also be a small screw in the corner that need to be removed before the side panel can be pulled off.



2. Remove the factory grille. Open the hood and remove the hood release latch by removing two T15 screws. Remove the ten plastic clips holding the plastic shield located above the grille.



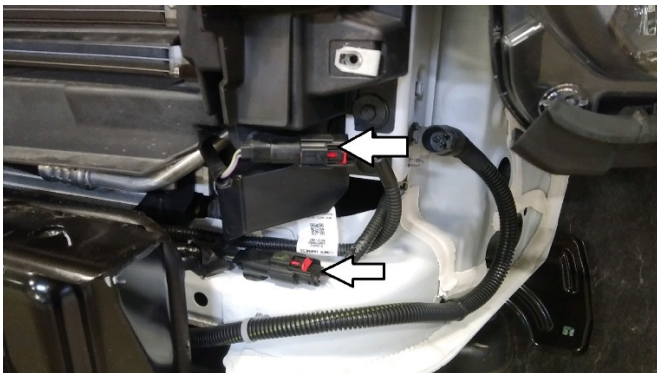
3. If vehicle is installed with a front camera, unhook the pigtail connector. The grille can then be removed by removing the (4) 10mm bolts on top and (4) 10mm (two on each side) from each side.



4. Remove the factory side brackets. There will be (3) 15mm bolts per each side.



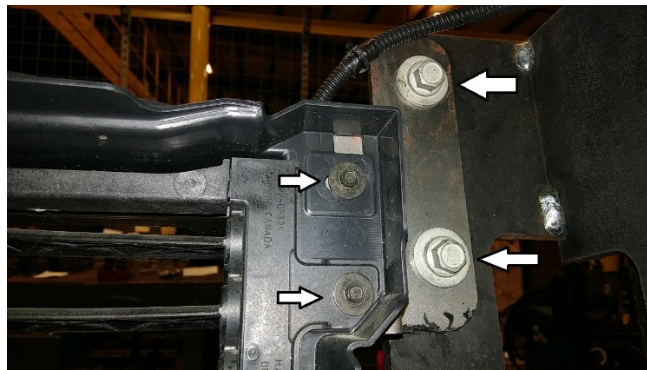
5. Remove the factory bumper by removing the (2) 18mm bolts from each side of the frame. They will be facing down.
6. Lay the bumper down, then remove the sensor and fog light wires (if present) from the bumper.
**You will have to remove the (2) large black bumper support plates to remove sensors.*
7. Reinstall the factory grille, plastic radiator cover and side panels.
8. Unplug and remove the lower louvered air duct panel.



9. Pop out the clips and insert them in the provided brackets.



10. Remove the two black bumper mounting plates by removing the (4) 15mm bolts. The bolts will be used to install the Ranch Hand Bumper.
11. Mount the front end to the frame by re-using the 15mm factory bolts. Level the front end and then tighten the bolts.
12. Mount the bottom brackets to the tow hook holes. Remove the tow hook bolts and use the 5" x 1/2" bolts to install. If no tow hooks use 1 1/2" x 1/2" bolts. Use the 1/2" black carriage bolts to mount the front end to the bottom brackets. *(Note: The extra black carriage bolts and hardware are for installing fog light brackets.)*
13. Mount the license plate using 1/4" bolts to the bottom grille insert.
14. Mount the louvered air duct and brackets to the inside bolts of the replacement bumper.



15. Hook up the sensor and fog light wires. Use the rubber grommets to install the sensors. You can run the wires through the square opening in the mounting brackets just below the top plate. Adjust the lights and sensors if needed.
16. Install the fog lights using brackets and instructions from LBC19HBP.

MAKE SURE ALL BOLTS AND NUTS ARE TIGHT!

----- **WARNING** -----

Special care should be exercised in the handling, storage and installation of Ranch Hand Equipment. The actual weight of each piece of equipment will vary depending on style and model. The weight of the equipment is sufficient in volume to warrant special care, assistance and in some instances, the use of mechanical equipment during the transfer and installation of the equipment. Do not assume a position directly under the equipment during installation. Be sure the equipment has been connected and stabilized during installation to prevent falling or shifting of positions. Periodically check tightness of bolts to make sure they are tight, and unlikely to fail.