

INSTALLATION MANUAL

FSC22H

Level of Difficulty

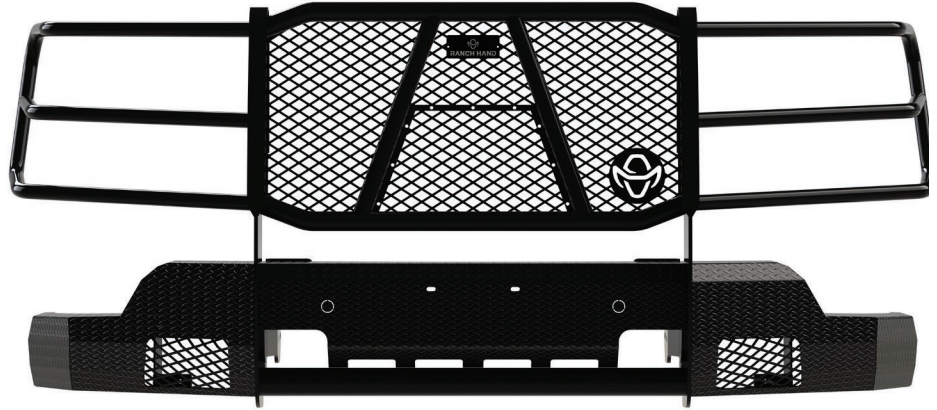
Moderate

Installation difficulty levels are based on time and effort involved and may vary depending on the installer level of expertise, condition of the vehicle and proper tools and equipment.

Parts List

Qty	Description
1	Driver side top bracket
1	Passenger side top bracket
1	Driver side bottom bracket
1	Passenger side bottom bracket
1	Driver side fog light bracket
1	Passenger side fog light bracket
2	Fog light mounting bracket
1	Grill insert 2
4	Rubber grommet
2	Rubber washer
2	Bolt tab, 1/2" & 3/8"
2	Bolt tab, 1/2"
6	Hex head bolt, 1/2"-13 x 1-1/2", grade 5
16	Flat washer, 1/2"
10	Lock washer, 1/2"
10	Hex nut, 1/2"-13
2	Hex head bolt, 7/16"-14 x 1-1/2" grade 5
4	Flat washer, 7/16"
2	Lock washer, 7/16"
2	Hex nut, 7/16"-14
2	Flat washer, 3/8"
2	Lock washer, 3/8"
2	Hex nut, 3/8"-16
21	Black button head bolt, 1/4"-20 x 3/4"
21	Black kep nut, 1/4"-20
14	Flat washer, 1/4"
1	Summit front bumper

Product Photo



NOTICE

Visit www.ranchhand.com for a full-color copy of this instruction manual, as well as helpful videos, guides and much more!

Before you begin installation, read all instructions thoroughly.

Proper tools will improve the quality of installation and reduce the time required.

Periodic inspection of your product should be performed to ensure all hardware and / or components remain secure.

To help prevent damage to the product or vehicle, refer to the specified torque specifications when securing hardware during the installation process.

Maintenance

Mild automotive detergent may be used to clean the product. Do not use dish detergent, abrasive cleaners, abrasive pads, wire brushes or other similar products that may damage the finish.

Product Registration and Warranty

Ranch Hand stands behind our products with industry-leading warranties. To get copies of the product warranties, register your purchase or provide feedback, visit: warranty.curtgroup.com/surveys

Tools Required

Ratchet	Torque wrench
SAE wrenches	SAE socket set
Metric wrenches	SAE wrenches
Allen wrench, 5/32"	Torx bit, T-15
Flathead or Phillips screwdriver	Panel trim removal tool
Socket extension	--

Torque Specifications

M12 bolt	59 ft-lbs.
1/2" bolt, grade 5	75 ft-lbs.
7/16" bolt, grade 5	50 ft-lbs.
3/8" bolt, grade 5	30 ft-lbs.
Use above torque setting unless otherwise noted	

Step 1

Remove the T-15 Torx screws from the front inner fender well.

Step 2

Using a panel trim tool, pry the side of the plastic fascia away from the side fender. There are a pair of clips below and a pair of clips on the head light. The center of the fascia will have slide clips.



Step 3

Open the hood and remove two T-15 screws from the hood latch. After removing the fasteners, remove the latch and set it aside for re-installation.



Step 4

Remove the ten plastic clips holding the plastic shield above the grille.



Step 5

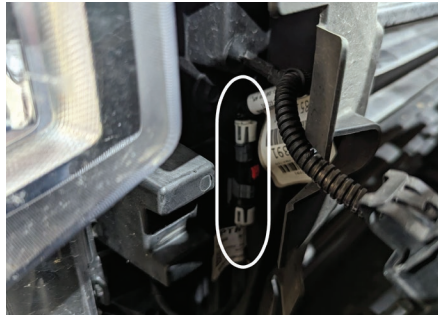
Remove the three 10mm bottom grille bolts.

Step 6

Remove the four 10mm bolts from the top of the grille.

Step 7

Remove the grille. If a camera is installed, unplug the camera harness located on the passenger side of the grille. If a camera washer is present, unplug the washer harness located on the driver side of the grille.



Step 8

Unplug the main harness located on the passenger side.



Step 9

On diesels, unplug the block heater harness located on the driver side.



Step 10

Remove three (3) 15mm bolts from each of the side bumper supports (6 bolts in total).



Step 11

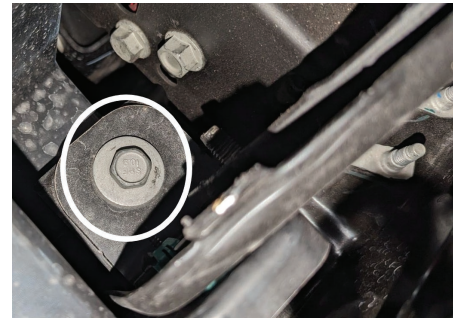
Remove the 10mm bolts from the lower bumper.

Step 12

Remove the plastic shields covering the top and bottom bumper bolts by depressing the push clips.

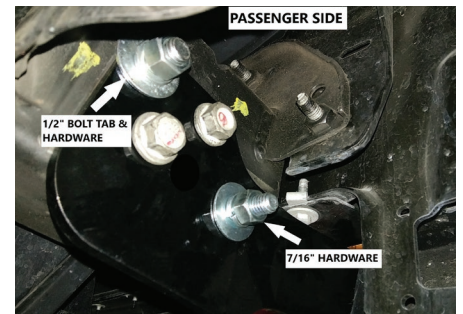
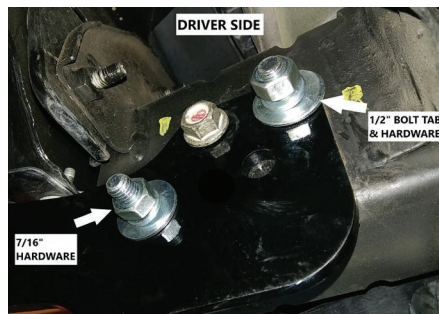
Step 13

Remove the factory bumper by removing the two 18mm bolts from each side of the frame. They will be facing down.



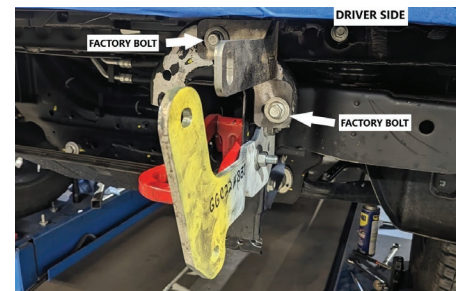
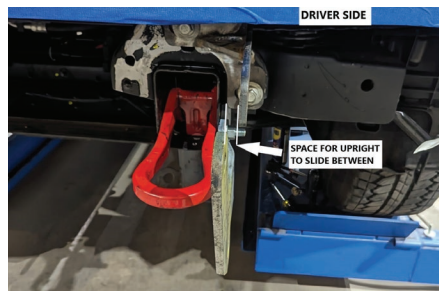
Step 14

Install lower brackets and tow hooks, if present, against the outside of the frame. Use factory tow hook bolts, 1/2" and 7/16" hardware to install.



Step 15

Install the top mounting brackets. Leave a gap the space of the upright between the bottom bracket and top bracket. You will reuse two 15mm bolts. Hand tighten only.



Step 17

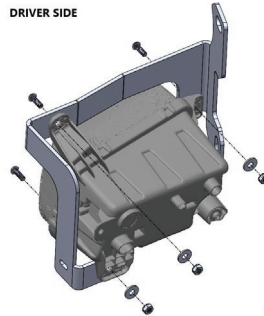
If sensors are present, remove the sensor/fog light wiring harness from the factory bumper. Remove the knockouts from the new bumper and install the rubber grommets into the holes. Run the wiring harness through the rectangle holes of the uprights. When installing sensors, spray a small amount of WD-40 in the grommet holes and around the sensors to help fitting them. Set the sensors at a 45-degree angle.

Step 18

Secure the front end to the top and lower brackets using the 1/2" hardware. Place the bolts facing outward so fog light brackets can be installed more easily. Center the front end from horizontally and vertically. Tighten all bolts and nuts.

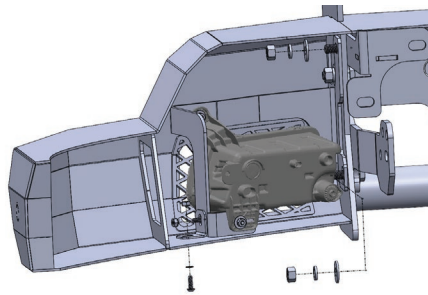
Step 19

Secure the fog lights in the fog light brackets with 1/4" button screws, washers and kep nuts.



Step 20

One side at a time, remove the nut and washer from the top bracket and the lower nut from the bottom bracket. Install the fog light/fog light bracket. Center it in the opening of the bumper then reinstall the washers and nuts. Use a couple of 1/4" button head bolts and kep nuts to install the "L" bracket to the bottom of the bumper and fog light bracket. Use a rubber washer with the bolt located on the bottom of the bumper to seal the opening.



Step 21

Plug in the sensor/fog light wiring harness.

Step 22

On diesel trucks, punch out the knock-out plug located on the driver side end cap to install the block heater plug.



Step 23

Install the license plate using 1/4" button head bolts, washers and kep nuts.

Step 24

If your truck does not have a front camera, install the center insert. Use 1/4" button head bolts and kep nuts to secure it.