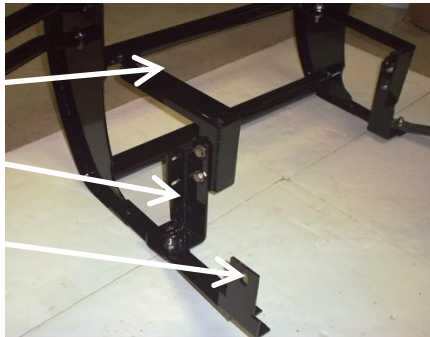


03-06 Ford Expedition, Grille Guard Installation Instructions.
Part # 200-10-3004

Upper support bracket

Frame Horn Bracket

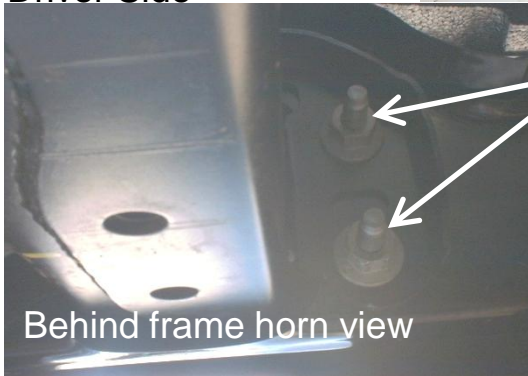
Side Body Mount Bracket



Quantity	Description
20	1/2 inch flat washers
10	1/2 inch Hex nuts
10	1/2 inch lock Washer
2	1/2 inch X 6 inch bolts
8	1/2 inch X 1-3/4 inch bolts
50	Total Pieces

Passenger Side

Driver Side



Behind frame horn view

Step 1: Pull out plastic pegs that hold rubber flap on the bottom, but do not remove rubber. Remove nuts from factory bolts which are located on the inner frame horn plate as shown (2 on driver side + 2 on passenger side).

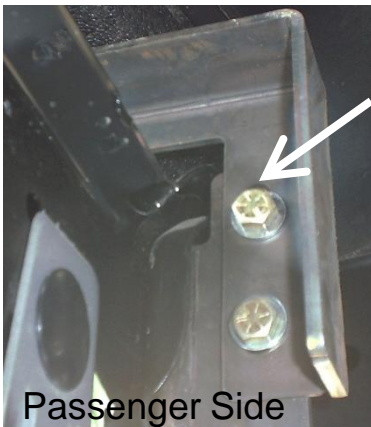


Step 2: Attach frame horn bracket to the factory bolts that have just had nuts removed in step 1. Install with bend in bracket pointing toward the chassis rail. Bottom "foot" with pre-punched hole should be pointed toward outside of truck.

Step 3: (EDDIE BAUER EDITION ONLY: Remove lower bumper grille so that upper bracket can stick through bumper! Grille can be cut and reattached after install depending on customer). Attach upper support bracket to the side of frame horn bracket that was bolted on in step 2 using supplied bolts. The angle in the bracket should face the inner side of truck.

Step 4: Position Grille Guard on truck by attaching it to upper GG brackets with supplied bolts. Place Grille Guard tab on top of upper support bracket. **IMPORTANT:** check alignment and position of Grille at this stage, then snug bolts to prevent shifting later.

Passenger Side



Passenger Side

Frontier Truck Gear © 2007

Step 5: Attach side body mount bracket along outside of frame by sliding it up into body mount shackle. Put long bolt, that is supplied, through the entire frame rail and into bracket. **NOTICE:** Bolt runs from inside to outside- nut must go on the outside of frame. Installer must push plastic radiator cover back toward motor in order to clear the bolt head. The long arm of the bracket will then reach down and align with frame horn bracket attached in step 2. Side body mount bracket should rest on top of frame horn bracket.



Step 6: When Grille is aligned, attach bottom foot of Grille to the pre-punched holes of the brackets installed in step 5. Tighten all bolts. Reattach rubber flap for proper air flow to condenser.