



1-800-366-9712

INSTALLATION INSTRUCTIONS

IMPORTANT NOTICE: Be sure to inspect and test fit product before having it coated or painted. Ranch Hand will not be responsible for the cost of the coating if any problems with fit or finish are not noted and addressed beforehand.

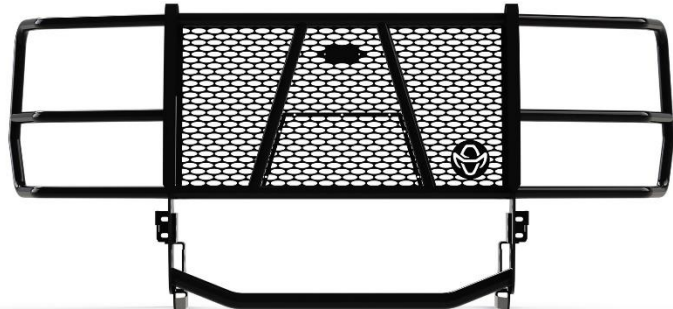
2023-up FORD SUPER DUTY GRILL GUARDS PART # GGF231BL1 / PBF231BL1

**NOTE: You will need to cut openings in the air dam for the bottom brackets. Also, you will need to cut openings for top brackets & grill guard to be mounted.*

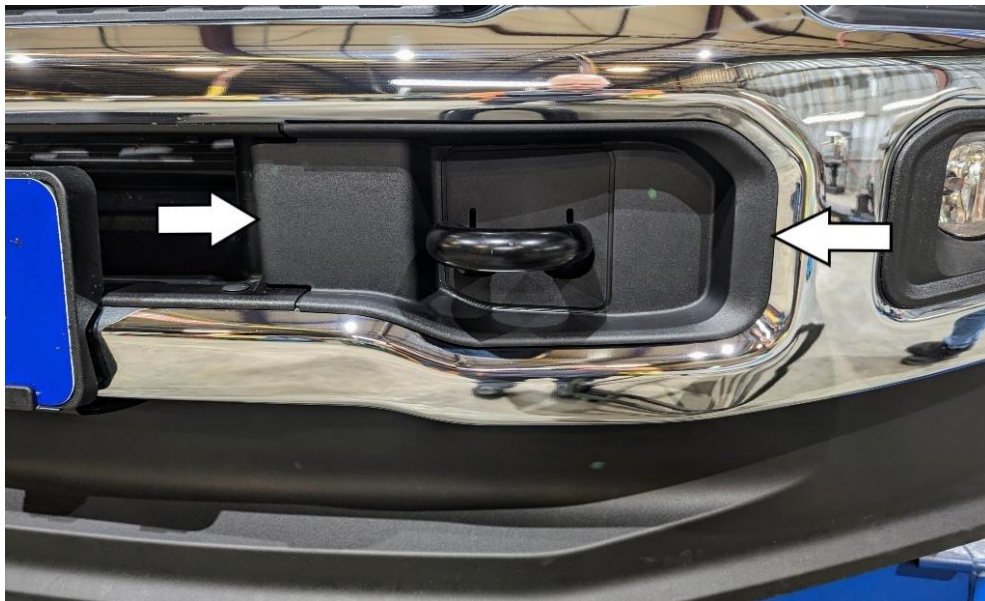
**NOTE: For vehicles with sensors, you may need sensor relocation bar PSF231BL1.*

TOOLS REQUIRED

- Ratchet and extension
- 7/16", 3/4" sockets and/or wrenches
- 18mm sockets and/or wrenches
- 5/32" Allen wrench
- Flat and/or Phillips screwdriver
- Tape Measure
- Pry tool
- Utility knife



1. Remove the plastic insert that is around the tow hooks. Remove the two-outside factory 18mm bumper bolts from each side.



----- WARNING -----

Special care should be exercised in the handling, storage and installation of Ranch Hand equipment.

The actual weight of each piece of equipment will vary depending on style and model. The weight of the equipment is sufficient in volume to warrant special care, assistance and in some instances, the use of mechanical equipment during the transfer and installation of the equipment.

Do not assume a position directly under the equipment during installation. Be sure the equipment has been connected and stabilized during installation to prevent falling or shifting of positions.

Periodically check tightness of bolts to make sure they are tight, and unlikely to fail.

Rev. 2023

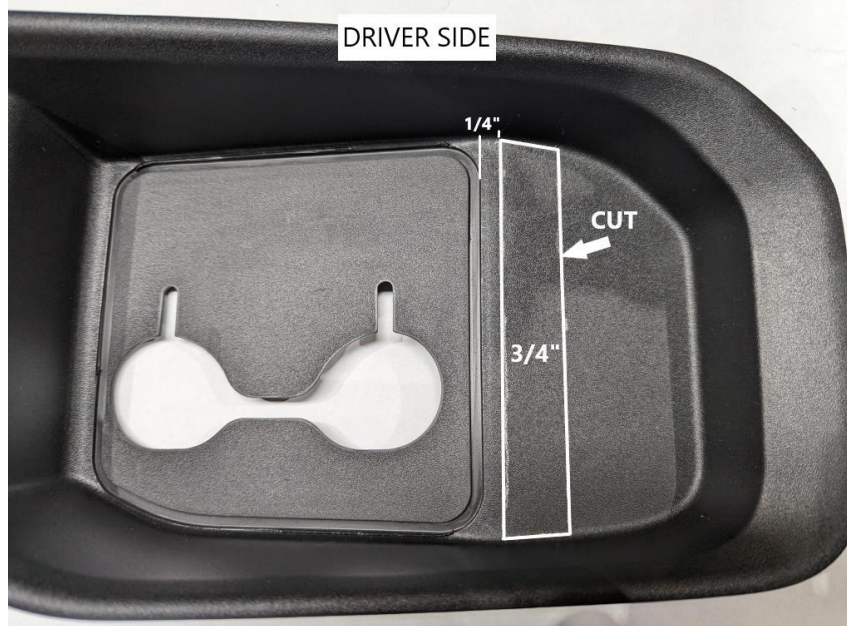


1-800-366-9712

INSTALLATION INSTRUCTIONS

IMPORTANT NOTICE: Be sure to inspect and test fit product before having it coated or painted. Ranch Hand will not be responsible for the cost of the coating if any problems with fit or finish are not noted and addressed beforehand.

2. Cut a slot into the plastic insert. Measure from the recess line $\frac{1}{4}$ " and make the cut $\frac{3}{4}$ ". Using a utility knife or cutoff wheel, cut a slot for the top bracket and upright to slide in between.



3. Remove the two outside 18mm bumper bolts.



4. To install the bottom bracket, remove the two 18mm nuts from the side of the frame. Install the bottom mounting brackets. Line the top hole of the bracket over the top hole of the bumper. Reuse factory hardware.

WARNING

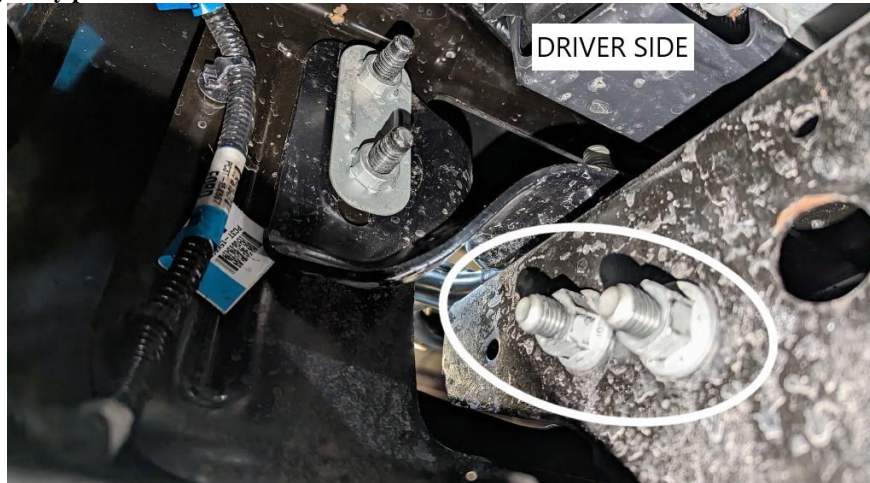
Special care should be exercised in the handling, storage and installation of Ranch Hand equipment. The actual weight of each piece of equipment will vary depending on style and model. The weight of the equipment is sufficient in volume to warrant special care, assistance and in some instances, the use of mechanical equipment during the transfer and installation of the equipment. Do not assume a position directly under the equipment during installation. Be sure the equipment has been connected and stabilized during installation to prevent falling or shifting of positions. Periodically check tightness of bolts to make sure they are tight, and unlikely to fail.
Rev. 2023



1-800-366-9712

INSTALLATION INSTRUCTIONS

IMPORTANT NOTICE: Be sure to inspect and test fit product before having it coated or painted. Ranch Hand will not be responsible for the cost of the coating if any problems with fit or finish are not noted and addressed beforehand.



5. Mount the top brackets using $\frac{1}{2}$ " x 2" bolts to the holes by the tow hook. Set the bracket so that they measure $\frac{1}{16}$ " under 41". Make sure the bracket measures the same from the tow hook to the bracket on each side which will ensure the grill guard will be centered. Tighten bolts and reinstall the plastic cover.
6. To install the bottom bracket, you will need to cut slots in the air dam. Find the center and measure out $19 \frac{3}{8}$ " and $19 \frac{7}{8}$ " (from each side) and mark. From the top of the air dam measure down $\frac{3}{4}$ " and $4 \frac{3}{4}$ " and mark. Cut a slot using these measurements.
7. Mount the grill guard to the outside of the top brackets. Use $\frac{1}{2}$ " carriage bolts. Once grill guard is in the position of liking, tighten bolts.
8. Install the support brackets to the bottom brackets by using $\frac{1}{2}$ " x $1 \frac{1}{2}$ " hardware. Bolt the support brackets to the grill guard using $\frac{1}{2}$ " carriage bolts.
9. If the vehicle does not have a camera, install small insert by using the black button head bolts and nuts.
10. **MAKE SURE ALL NUTS AND BOLTS ARE TIGHT!**

----- WARNING -----

Special care should be exercised in the handling, storage and installation of Ranch Hand equipment. The actual weight of each piece of equipment will vary depending on style and model. The weight of the equipment is sufficient in volume to warrant special care, assistance and in some instances, the use of mechanical equipment during the transfer and installation of the equipment. Do not assume a position directly under the equipment during installation. Be sure the equipment has been connected and stabilized during installation to prevent falling or shifting of positions. Periodically check tightness of bolts to make sure they are tight, and unlikely to fail.
Rev. 2023