

## Preparation:

- Disconnect the negative battery terminal. Park the vehicle on level ground and set the emergency brake.
- We recommend reading through the installation instructions in whole before performing the work.
- When button head bolts are being used, install the supplied washer on the nut side. Then, hold the bolt stationary and only turn the nut to tighten. Do not turn the bolt to tighten hardware assembly, unless otherwise noted.
- Estimated Installation Time: **2 Hours for OEM Removal/Bumper Installation**  
**1 Additional Hour to Wire Lights**

**\*\*This installation requires 2 people for best results\*\***

**\*\*Labor Rates are based on a vehicle with no pre-existing damage. Wiring labor is based on a standard wiring procedure with light switches installed in an easily accessible location. Custom light triggering or switch mounting location will result in a greater labor charge.\*\***

## You will need the following tools:

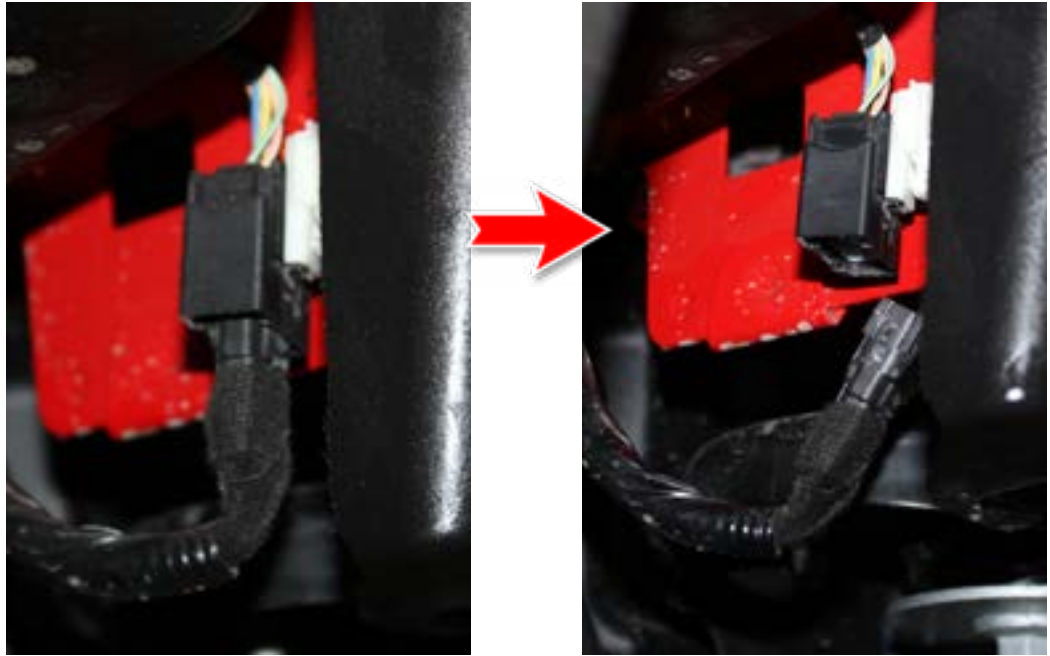
- |                          |                        |                          |
|--------------------------|------------------------|--------------------------|
| - Ratchet                | - 11mm Socket          | - 9/16" Socket & Wrench  |
| - 7/32" Allen head Set   | - 13mm Socket & Wrench | - 1 1/8" Socket & Wrench |
| - Long Ratchet Extension | - 15mm Socket & Wrench |                          |
|                          | - 18mm Socket          |                          |

## Included in Kit:

- |  |  |
|--|--|
| <b>4</b> - Extra Long Extended U nuts (3/8"-16)    | <b>8</b> - Black Flat Washers (1/4")               |
| <b>2</b> - Black Nylon Lock Nuts (3/8"-16)         | <b>4</b> - Black Button Head Bolts (1/4" -20 x 1") |
| <b>6</b> - Black Button Head Bolts (3/8"- 16 x 1") | <b>8</b> - Black Nylon Lock Nut (1/4"- 20)         |
| <b>8</b> - Black Flat Washers (3/8")               | <b>2</b> - Black Nylon Lock Nut (5/16"-18)         |
| <b>2</b> - Hex Head Bolts (3/4"-10x 1 1/2")        | <b>2</b> - Black Flat Washers (5/16")              |
| <b>4</b> - Flat Washer (3/4")                      | <b>2</b> - Self Tapping Screws (12 x 1")           |
| <b>2</b> - Nylon Lock Nut (3/4" -10)               | <b>1</b> - Black Rubber Bumper                     |
| <b>4</b> - Sensor Plugs and Grommets               |  |

1. Unplug the main bumper harness connectors located on both the driver and passenger side of the vehicle along the frame rail. There are 2 connectors in total located under the rear fenders. (Fig A)

**Fig A**



2. Using a 13mm socket, unbolt the side bumper supports on each side of the bumper just outside of the frame rails. (Fig B)

**Fig B**



3. There are 2 (15mm) bolts that are located behind the bumper towards the inside of the frame. After those 2 bolts have been removed the bumper can be pulled off. (Fig C)



Fig C

4. After the bumper is removed, take off the wiring harness by disconnecting the sensor plugs and License plate light. (Fig D)



Fig D

5. Unclip the license plate light by squeezing the plug and pulling away from the bumper. (Fig E)



**Fig E**

6. There are 2 tabs on each side of the license plate light you will need to grind down (**Grind a little bit, test fit then grind more if needed When installing onto the ADD bumper**). There are 2 tabs on the face of the light that also need to be grinded down completely to be flush with the light. (Fig F)



**Grind Off The Top Tabs Completely**



**Slightly Trim The Side Tabs Then Test Fit**

**Fig F**



7. Take off the sensor bezels from the stock OEM bumper by squeezing the black part and push out to pop them out then remove the white plastic cover to get them ready to put on the ADD bumper. (Fig G)



Fig G

**For Plastic Bumper Sensor Bezels :**

8. Install the sensor bezels on the ADD bumper in the (same position/orientation as stock). Insert the black bezel part through the outside of the bumper, then slide the white backer on From the inside. (Fig H)

**Backside of bumper**

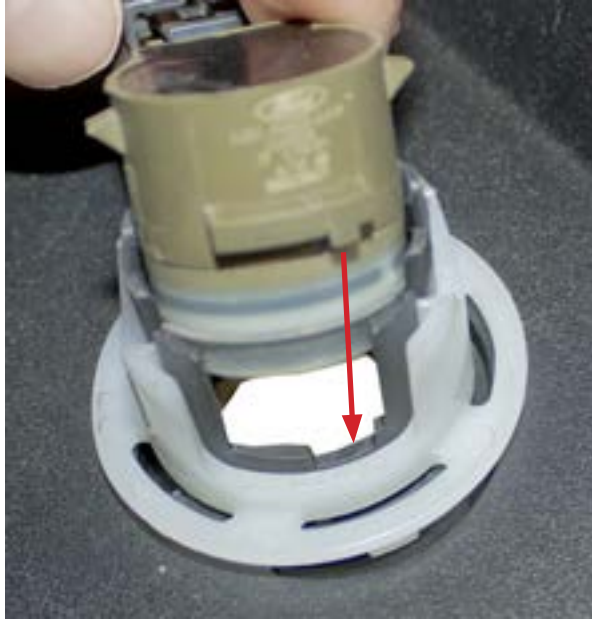


**Front side of bumper**



**Fig H**

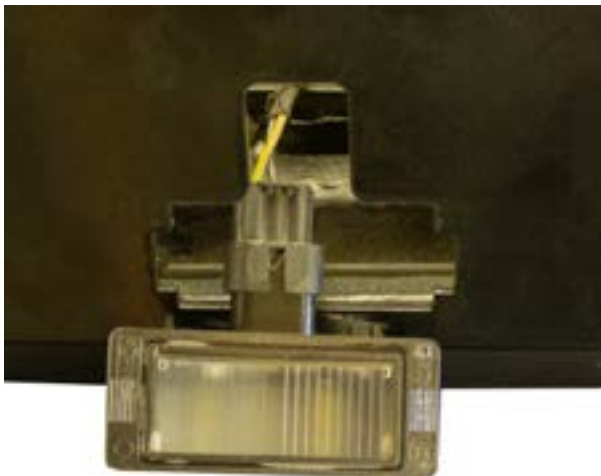
9. Install the sensor into the sensor bezel as shown below (Fig J). (Make sure the sensor plug tab lines up with the bezel cut out)



**Fig J**

10. Insert license plate light into license plate light cut out from the outside of the bumper. Then push the light into place from the outside of the bumper. (Fig I)

**Insert light from outside the bumper**



**Press into place from outside bumper**



**Fig I**



### For Steel Bumper Sensor Bezels:

11. All the sensor bezels will be pointed upwards just like OEM when transferred to the ADD bumper. The inner sensor bezels can go on to the ADD bumper in the same position and orientation as the OEM sensor bezels would go (Fig K). (Outer sensor bezel marked ROR goes on the passenger side, the outer sensor bezel marked ROL will go on the driver side)



All sensor bezels should be pointed up like OEM does

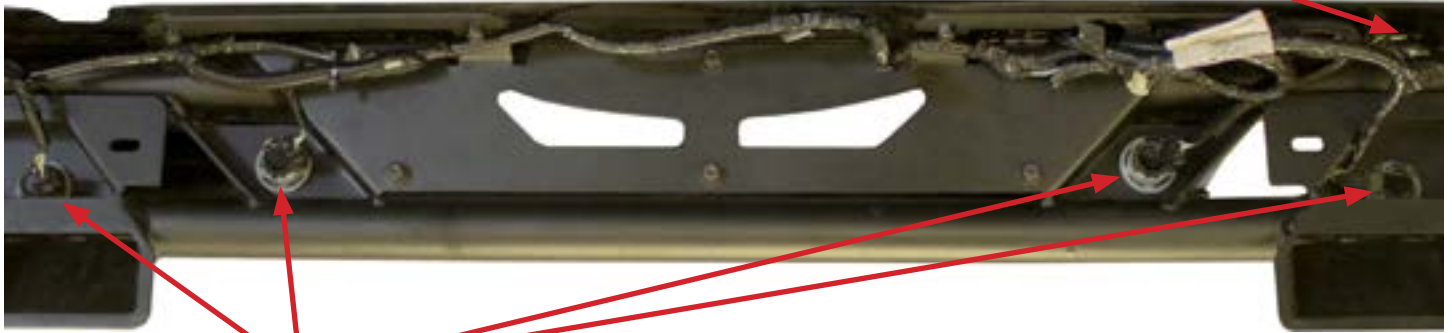


Fig K



12. After the Sensor bezels have been installed transfer the wiring harness that was take off the OEM bumper and install it on the ADD bumper. (Fig L)

**License plate light**



**Sensor locations**

**Fig L**

13. There is a bracket by the frame horn held in place by one bolt that needs to be removed shown below in (Fig M).



**Fig M**

**Remove bolt**

14. Remove the 2 (18mm) bolts in the frame of the bronco to install the bracket that will be used as a mounting point for the bumper, then after the bracket has been placed in the frame use the same bolts to attach the bracket to the frame. (Fig N)



Fig N

15. Install supplied 3/4" Bolt/washer/nut (1 per side) as shown in (Fig O).

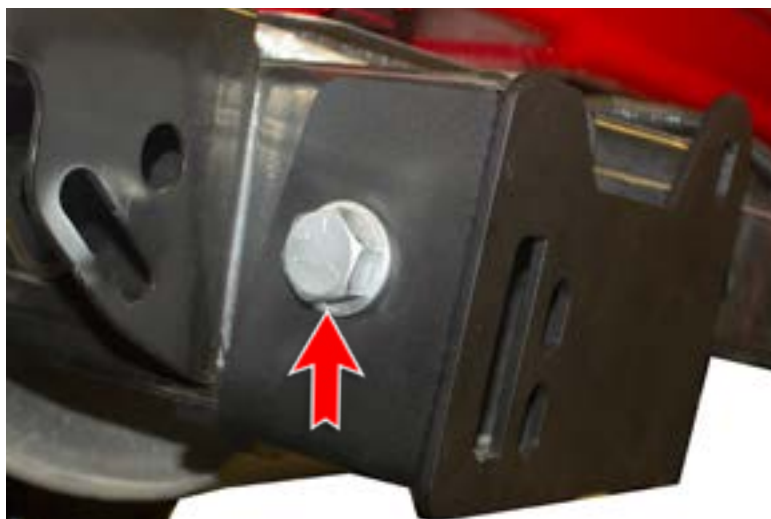


Fig O

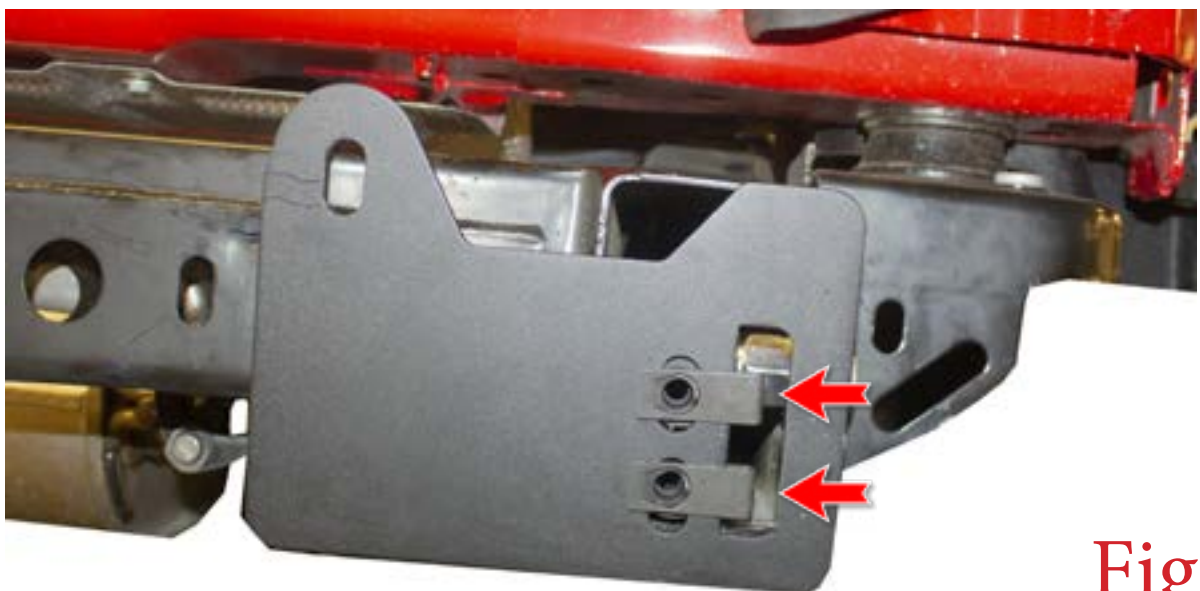
16. Before installing the bumper, be sure to disconnect the wiring harness from the bronco off the mount. This will free up room for the wiring harness in the ADD bumper to reach the factory connector. (Fig P)



**Disconnect**

**Fig P**

17. Install the provided U-nuts (2 per side) on the mounting brackets. (Fig Q)



**Fig Q**

18. Set bumper in place on vehicle. Secure using the supplied 3/8" Button Head Bolts (2 per side) in the lower mounting holes. Then use the remaining 3/8" Button Head Bolts (1 per side) 3/8" Washers (1 per side) and 3/8" Lock Nuts (1 per side) in the upper mounting holes. (Fig R)



**Install button head with  
lock nut on the backside**

**Screw button heads into  
the U-nuts**

**Fig R**





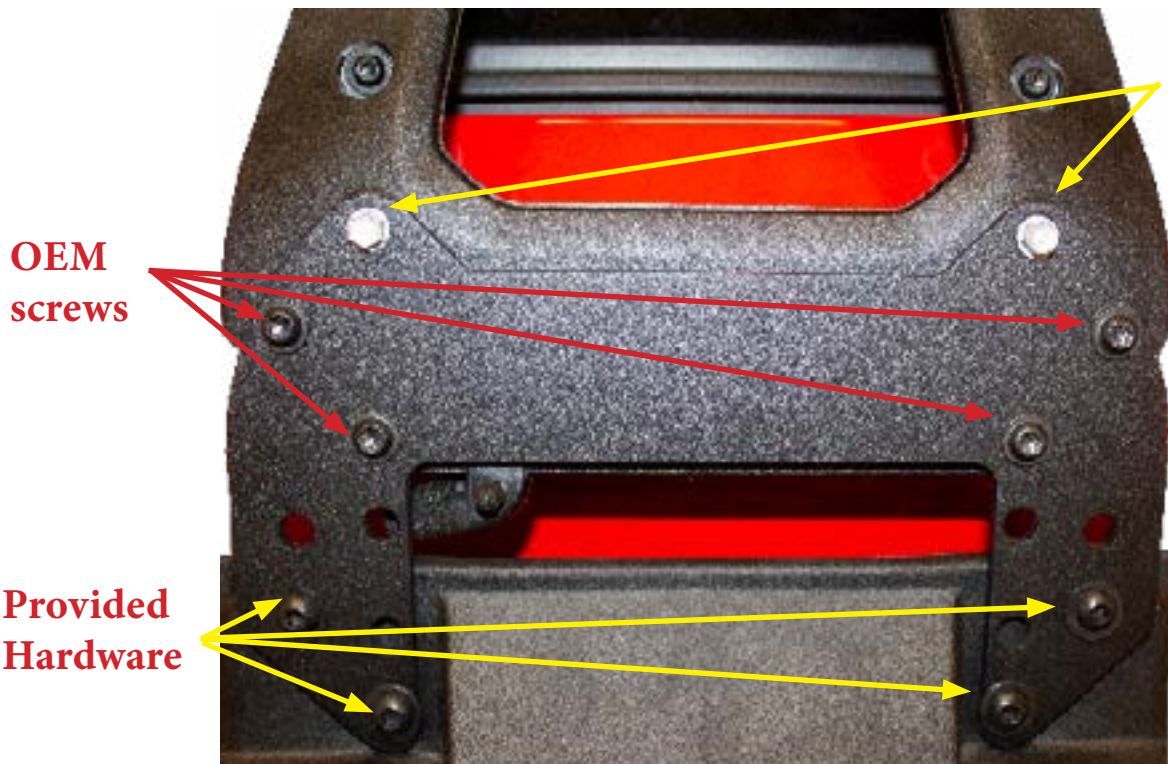
19. Remove the 4 bolts that connect the mount to the tire rack. (Fig p)



**Remove OEM  
x4 Screws**

**Fig S**

20. Use the 4 provided button head bolts to bolt on the extended bracket to the mount, then use to 4 OEM screws to mount the bracket to the brake light bracket. Than use the 2 provided screws to mount the bracket to the third tail light . (Fig R)



**Provided  
screws**

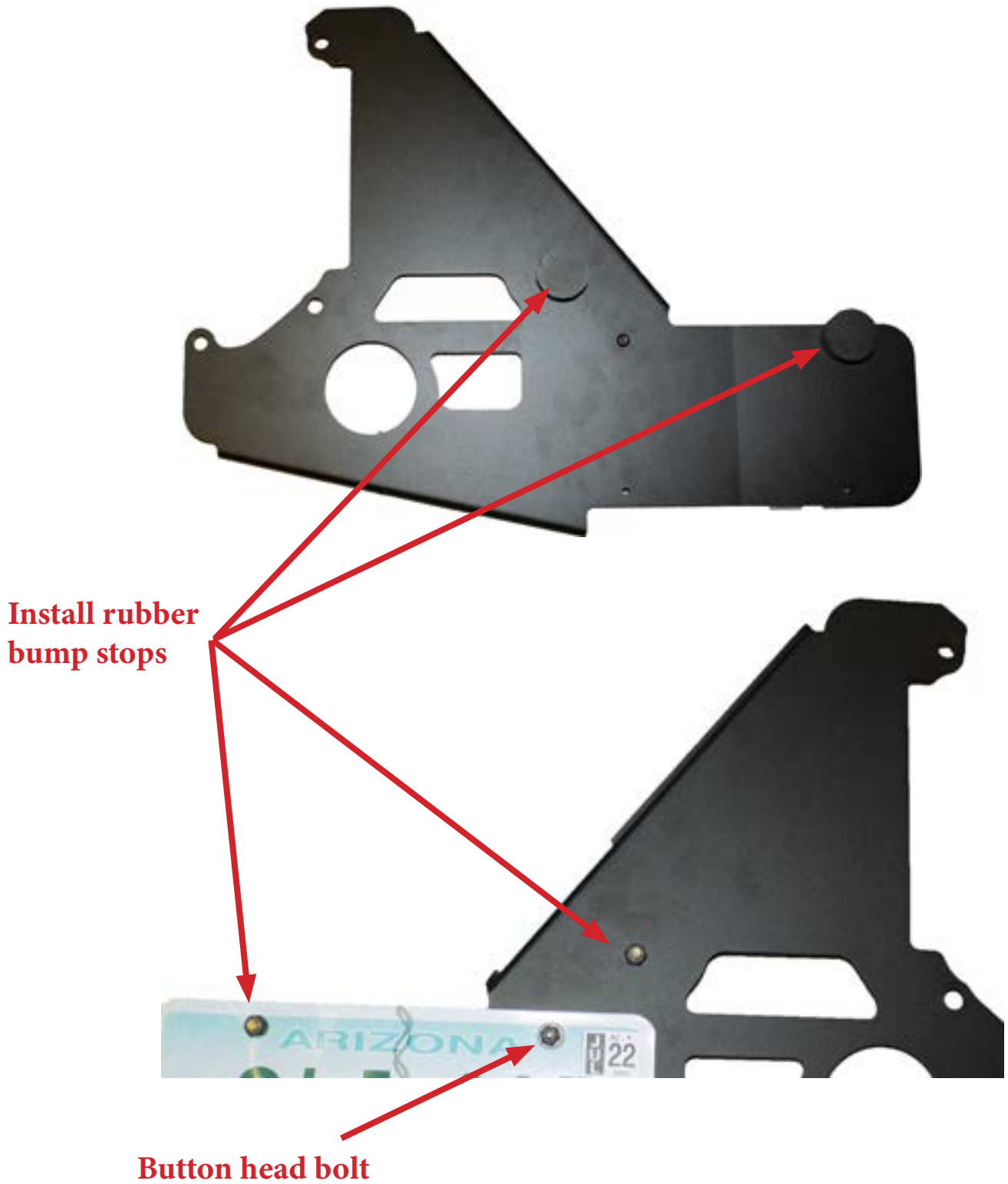
**OEM  
screws**

**Provided  
Hardware**

**Fig T**



21. On the license plate bracket you will install 2 rubber bump stops in the areas shown below in figure (Fig S). The rubber bump stop on the far right will go through the license plate bolt. Then use the black button head bolt for the license plate along with the washer and nut facing the same orientation as the rubber bump stops.

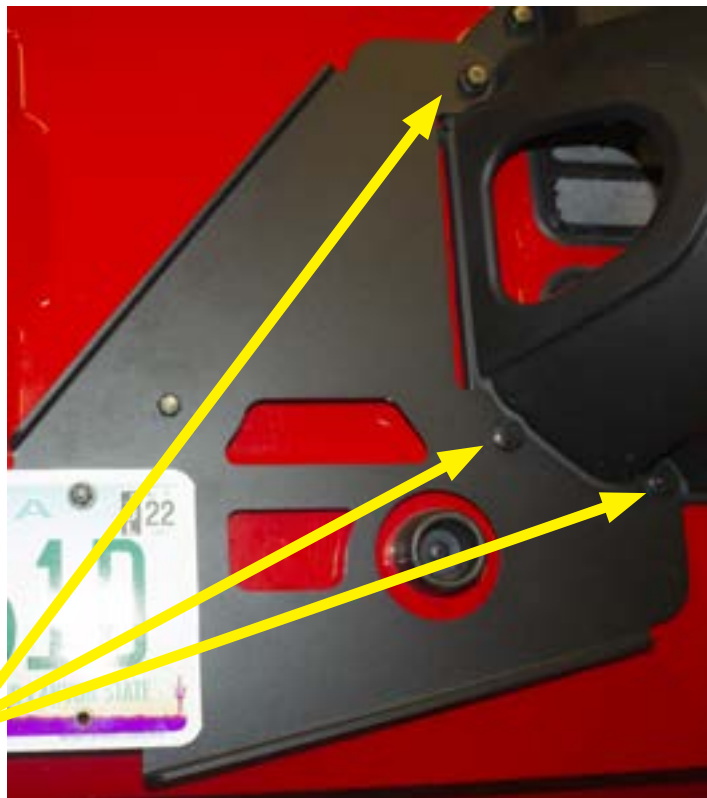


**Fig U**

22. Remove the 3 factory (13mm) bolts from the tire carrier shown below in. (Fig T) After the bolts have been removed you can bolt on the license plate bracket with the same OEM factory hardware.



**Remove the 3 bolts**



**Re-install OEM hardware**

**Fig V**



23. Adjust the height of the bumper then tighten down the bumper to 70 foot pounds
24. Check and re-tighten, if needed, all mounting bolts after 100 miles and periodically thereafter.
25. Stand back and enjoy your new ADD Pro Bolt-on™ Rear Bumper.

