

ROAD



ARMOR

2009 - 2012 FORD F150 REAR BUMPER INSTALL INSTRUCTIONS



Warning!

Read the instructions completely before beginning the installation. Before tightening bolts, drilling or cutting where required, check to make sure that there are no obstructions such as brake, fuel or electrical lines that may be damaged. Also keep in mind this is an aftermarket product and MAY require some minor shimming and or trimming, reaming etc. to fit properly.

IMPORTANT NOTICE

IF YOU ARE RECEIVING THIS ROAD ARMOR PRODUCT RAW/UNCOATED...

- BE SURE TO INSPECT AND OR TEST FIT YOUR PRODUCT TO ENSURE PROPER FITMENT AND ADEQUATE SURFACE PREPARATION BEFORE HAVING YOUR PRODUCT COATED, PAINTED, BED LINED, ETC.
- ROAD ARMOR WILL NOT BE RESPONSIBLE FOR THE COST OF COATING YOUR UNIT IF ANY PROBLEMS WITH FIT OR FINISH ARE NOT NOTED AND ADDRESSED PRIOR TO HAVING YOUR PRODUCT COATED.

THANK YOU

SUGGESTED LIGHTS THAT FIT THIS UNIT:

PIAA 2000 - www.piaa.com - Part Numbers (2091, 2090).
Hella 1400 Optilux



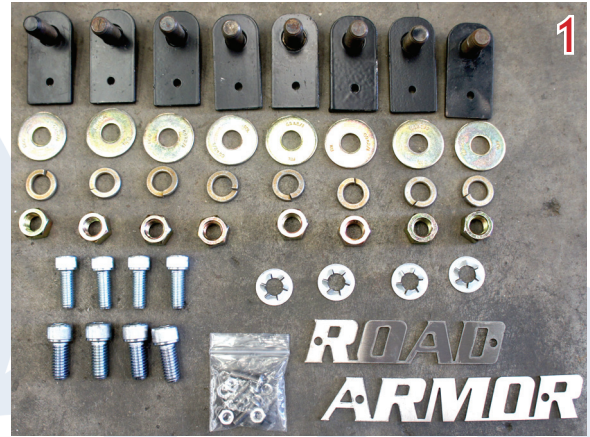
TOOLS NEEDED

- Yourself and a strong friend / bumper jack.
(Don't worry, we're not calling you or your friend a "tool")
- Socket set, Ratchet & Wrenches (metric & standard)
(... more than likely metric for your rig, cause everything's imported these days,
and standard for your new bad ass Made in USA bumper.
Road Armor thanks you for supporting the American Economy!)
- Common Sense Tape Measure and a bit of Patience
(And also a cold drink to celebrate afterwards)



STEP 1 : Make sure you have all necessary tools and hardware.

- Hardware Kit Includes : (all Grade 8)
- (8) Bolt Plates
 - (8) 1/2" Flat Washers
 - (8) 1/2" Lock Washers
 - (8) 1/2" Hex Nuts
 - (8) 1/2" Retaining Washers
 - (8) Allen Head Bolt - Winch Hardware
 - (1) Package of Road Armor Logo Hardware



Step 2 : Uninstall OEM Bumper

- Park on level surface and Disconnect Positive Battery Terminal.
- Unplug license plate light and if equipped remove back up sensors.
 - Look at Picture 2 on how to remove reverse sensors.
- Use a 10mm socket and ratchet to remove the three bolts per side that hold the bumper on.

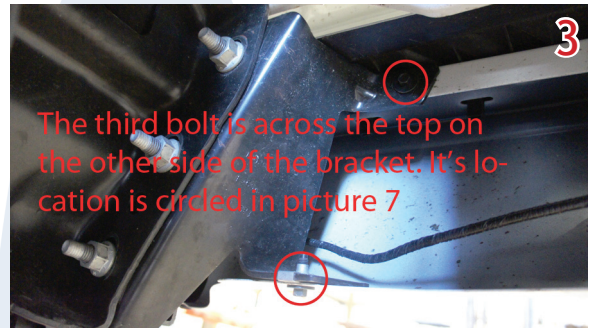
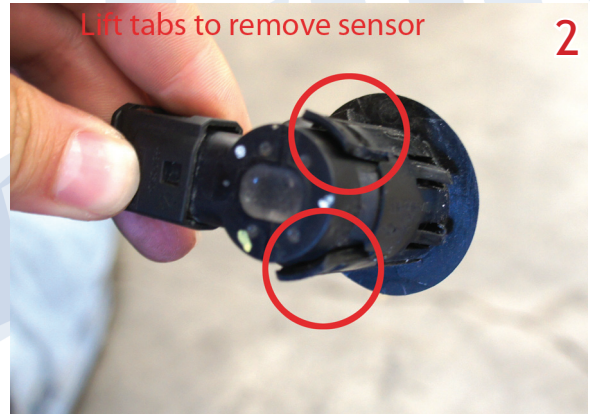
Picture 3

- Remove OEM bumper.

Note - there are two plastic tabs on the trailer hitch cross member that will need to be pushed out to remove the bumper.

Picture 4

- Remove license plate lights and backup sensor inserts from the bumper by pushing the plastic tabs in on the back and pushing forward.
- Pictures 5 - 6



Step 3 : Install Road Armor Bumper

- Use a 21mm or 13/16" Socket and Ratchet to remove the three nuts per side that hold the trailer hitch on.

Note : do one side at a time.

Picture 7

- Install Road Armor brackets using OEM hardware and tighten.

Picture 8

- Install Bolt tabs into the bumper and use retaining washers to keep the bolt tabs from falling out.

Note : use a deep socket to help push the retaining washers on.

Picture 9





- If you have a winch you can either install it now or after you have the bumper is installed. Be sure to install the fair lead bolts before installing the winch.
- Install Road Armor logo now because you wont be able to later.
- Install license plate lights and back up sensor inserts into Road Armor bumper.

Note : use side cutters and cut a 1/8 off the plastic clips on the back up sensor inserts to makeup for the thickness of the 3/16 steel. Make the to cut the same angle that it originally was from the factory.

Pictures 10

- Measure across the bracket slots and align the bolt tabs on the bumper to the distance you measured on the brackets for an easy install.

Pictures 11 - 12

- Mask off the corners of the body to prevent scratches.
- Install bumper using 1/2" hardware and snug up one bolt per side so you can make adjustments.
- Square the bumper to the body by measuring from the top face of the bumper to a body line on both sides of the vehicle. In addition, measure from side to side.

Picture 13

- Caution - when positioning the bumper, open the tailgate with caution to make sure the bottom of the tail gate clears the bumper.
- Once bumper is squared up to the body, tighten the 1/2" hardware.
- Plug in license plate lights and back up sensors.

Note : If you have back up sensors you will need to unplug the outside sensors from the wire harness in order to fish the plugs through the brackets.

