



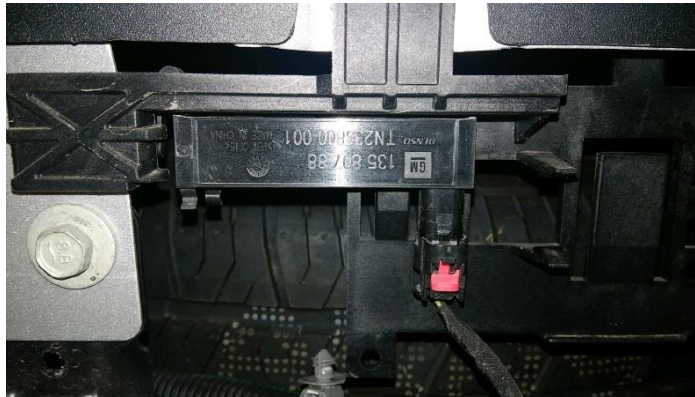
1-800-366-9712

INSTALLATION INSTRUCTIONS

IMPORTANT NOTICE: Be sure to inspect and test fit product before having it coated or painted. Ranch Hand will not be responsible for the cost of the coating if any problems with fit or finish are not noted and addressed beforehand.

2020-up CHEVY 2500HD/3500HD SPORT BACK BUMPER PART # SBC201BLSL

1. Remove the license plate.
2. On some models there will be one or two sensors behind the license plate, you will need to unplug it.



3. Unplug and remove trailer plug.
4. Unhook the license plate and sensor wiring harness.



5. Remove the bottom 13mm bolts from the side bumper brackets. Then loosen the top 21mm bolts.



WARNING

Special care should be exercised in the handling, storage and installation of Ranch Hand equipment. The actual weight of each piece of equipment will vary depending on style and model. The weight of the equipment is sufficient in volume to warrant special care, assistance and in some instances, the use of mechanical equipment during the transfer and installation of the equipment. Do not assume a position directly under the equipment during installation. Be sure the equipment has been connected and stabilized during installation to prevent falling or shifting of positions. Periodically check tightness of bolts to make sure they are tight, and unlikely to fail.
Rev. 2021

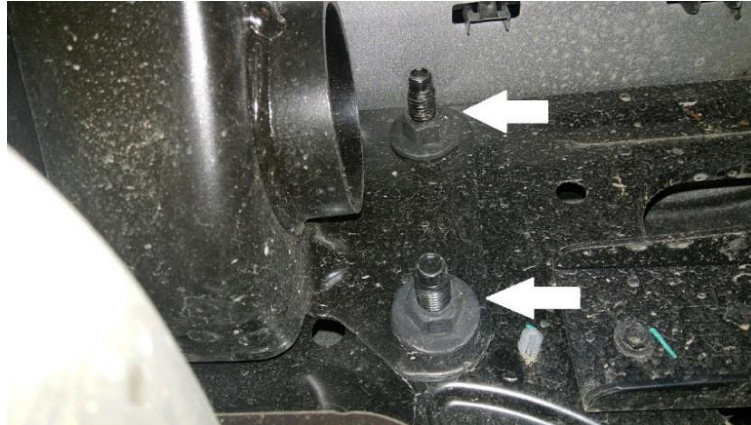


1-800-366-9712

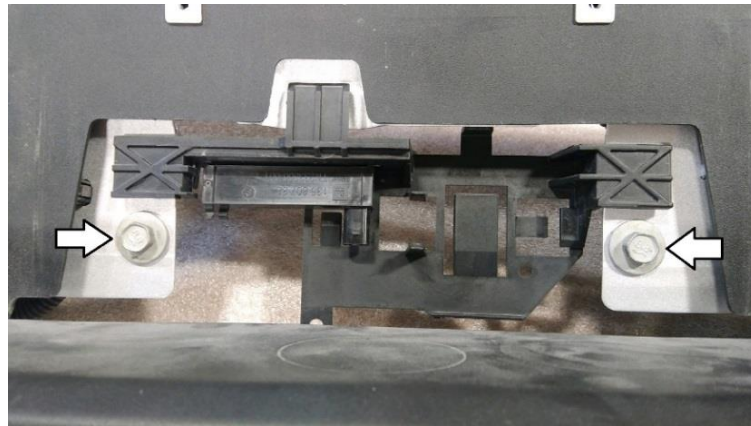
INSTALLATION INSTRUCTIONS

IMPORTANT NOTICE: Be sure to inspect and test fit product before having it coated or painted. Ranch Hand will not be responsible for the cost of the coating if any problems with fit or finish are not noted and addressed beforehand.

6. Remove the four 18mm nuts of the bumper brackets.



7. Lastly, remove the two 13mm bolts that are located behind the license plate and remove bumper.



8. Before installing the Sport bumper mount the sensor and factory bracket to the sensor bracket provided. Then mount the bracket to the tabs, using factory bolts, that was located behind the license plate.



WARNING

Special care should be exercised in the handling, storage and installation of Ranch Hand equipment. The actual weight of each piece of equipment will vary depending on style and model. The weight of the equipment is sufficient in volume to warrant special care, assistance and in some instances, the use of mechanical equipment during the transfer and installation of the equipment. Do not assume a position directly under the equipment during installation. Be sure the equipment has been connected and stabilized during installation to prevent falling or shifting of positions. Periodically check tightness of bolts to make sure they are tight, and unlikely to fail.
Rev. 2021



1-800-366-9712

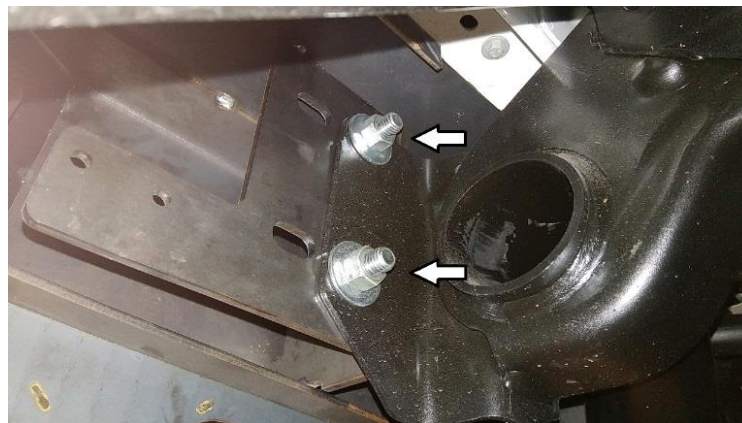
INSTALLATION INSTRUCTIONS

IMPORTANT NOTICE: Be sure to inspect and test fit product before having it coated or painted. Ranch Hand will not be responsible for the cost of the coating if any problems with fit or finish are not noted and addressed beforehand.

9. If the vehicle was equipped with A.D.A.S. (Advanced Driver Assist System) remove them from the factory bumper and mount to the two small holes located on the mounting bracket. You will need to drill the hole to $\frac{1}{4}$ " and then mark and drill another hole in line with the second hole of the bracket. Put the white plastic spacers between mounting bracket and the ADAS bracket.



10. Install the bumper buy using the $\frac{1}{2}$ " hardware provided. You will use the inner holes.



11. Mount the factory side bumper bracket to the tab located under the enc cap. Use $\frac{5}{16}$ " hardware.



----- **WARNING** -----

Special care should be exercised in the handling, storage and installation of Ranch Hand equipment. The actual weight of each piece of equipment will vary depending on style and model. The weight of the equipment is sufficient in volume to warrant special care, assistance and in some instances, the use of mechanical equipment during the transfer and installation of the equipment. Do not assume a position directly under the equipment during installation. Be sure the equipment has been connected and stabilized during installation to prevent falling or shifting of positions. Periodically check tightness of bolts to make sure they are tight, and unlikely to fail.
Rev. 2021



1-800-366-9712

INSTALLATION INSTRUCTIONS

IMPORTANT NOTICE: Be sure to inspect and test fit product before having it coated or painted. Ranch Hand will not be responsible for the cost of the coating if any problems with fit or finish are not noted and addressed beforehand.

12. Center bumper from side to side then tighten all bolts and nuts.
13. Install the trailer plug and spare tire lock.
14. Install the rubber grommets into the holes in the skirt for the sensors. Use a little WD-40 in the grommet to help with install of sensors.
15. Install the license plate and then license plate lights. Wire them into the factory license plate light harness.
16. Install the reverse lights. Wire then into the trailer plug harness.

MAKE SURE ALL NUTS AND BOLTS ARE TIGHT!

----- **WARNING** -----

Special care should be exercised in the handling, storage and installation of Ranch Hand equipment.

The actual weight of each piece of equipment will vary depending on style and model. The weight of the equipment is sufficient in volume to warrant special care, assistance and in some instances, the use of mechanical equipment during the transfer and installation of the equipment.

Do not assume a position directly under the equipment during installation. Be sure the equipment has been connected and stabilized during installation to prevent falling or shifting of positions.

Periodically check tightness of bolts to make sure they are tight, and unlikely to fail.

Rev. 2021