



1-800-366-9712

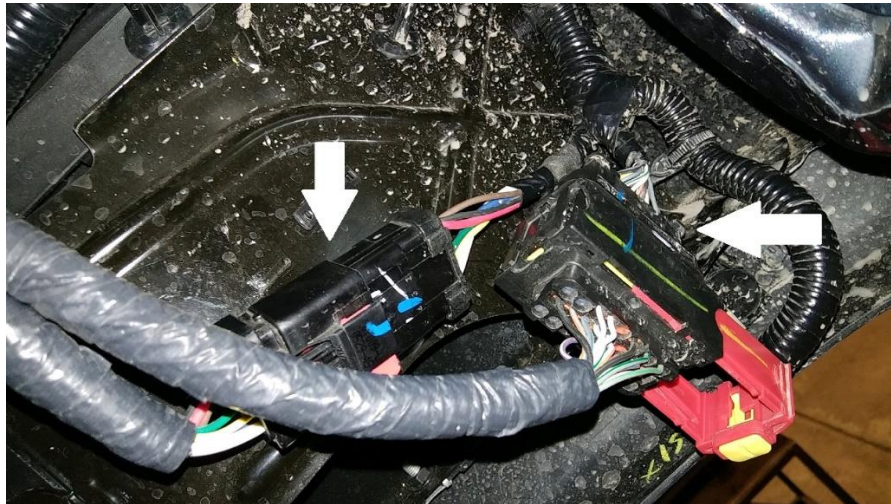
### **INSTALLATION INSTRUCTIONS**

**IMPORTANT NOTICE:** Be sure to inspect and test fit product before having it coated or painted. Ranch Hand will not be responsible for the cost of the coating if any problems with fit or finish are not noted and addressed beforehand.

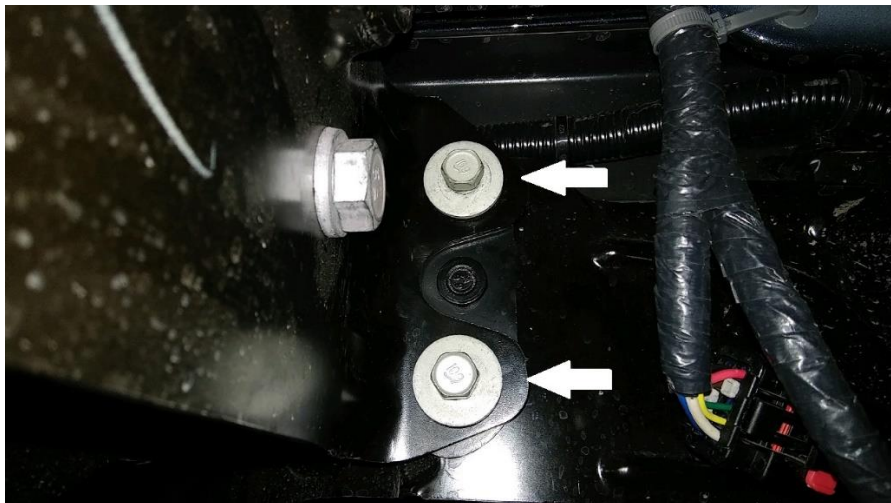
## **2019-up DODGE RAM 2500/3500 SPORT BACK BUMPER PART # SBD191BLSL**

**NOTE: ON DUAL LIES AND TRUCKS WITH SIX SENSORS, YOU WILL NEED TO PUNCH OUT THE “KNOCK-OUT” HOLE IN THE ENDCAP.**

1. Begin by unplugging the connectors for the sensors, trailer plug and license plate lights. They are located on the driver side of the bumper.



2. Remove the two 15mm bolts, on each side, that holds the factory bumper to the side bumper brackets.



### **----- WARNING -----**

Special care should be exercised in the handling, storage and installation of Ranch Hand equipment. The actual weight of each piece of equipment will vary depending on style and model. The weight of the equipment is sufficient in volume to warrant special care, assistance and in some instances, the use of mechanical equipment during the transfer and installation of the equipment. Do not assume a position directly under the equipment during installation. Be sure the equipment has been connected and stabilized during installation to prevent falling or shifting of positions.

Periodically check tightness of bolts to make sure they are tight, and unlikely to fail.

Rev. 2022



1-800-366-9712

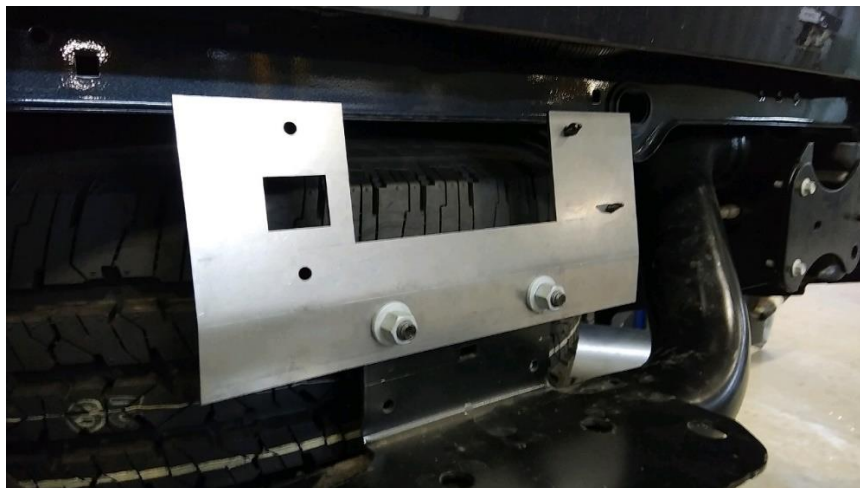
### **INSTALLATION INSTRUCTIONS**

**IMPORTANT NOTICE:** Be sure to inspect and test fit product before having it coated or painted. Ranch Hand will not be responsible for the cost of the coating if any problems with fit or finish are not noted and addressed beforehand.

3. Remove the two 15mm nuts that are located behind the license plate.



4. Remove the factory bumper.
5. Install the antenna module to the bracket supplied in the bolt package. Use the factory plastic clips to install. The bracket will then be mounted (using the two 15mm nuts) to the bracket on the factory receiver hitch.



6. Reinstall the license plate first and then license plate lights. Wire them into the factory license plate light harness.
7. Install the rubber grommets into the holes in the skirt and endcap (on six sensor vehicles) for the sensors. Use a little WD-40 in the grommet to help with install of sensors.
8. Install the Ranch Hand bumper by using the 1/2" hardware provided.

### ----- WARNING -----

Special care should be exercised in the handling, storage and installation of Ranch Hand equipment.

The actual weight of each piece of equipment will vary depending on style and model. The weight of the equipment is sufficient in volume to warrant special care, assistance and in some instances, the use of mechanical equipment during the transfer and installation of the equipment.

Do not assume a position directly under the equipment during installation. Be sure the equipment has been connected and stabilized during installation to prevent falling or shifting of positions.

Periodically check tightness of bolts to make sure they are tight, and unlikely to fail.

Rev. 2022

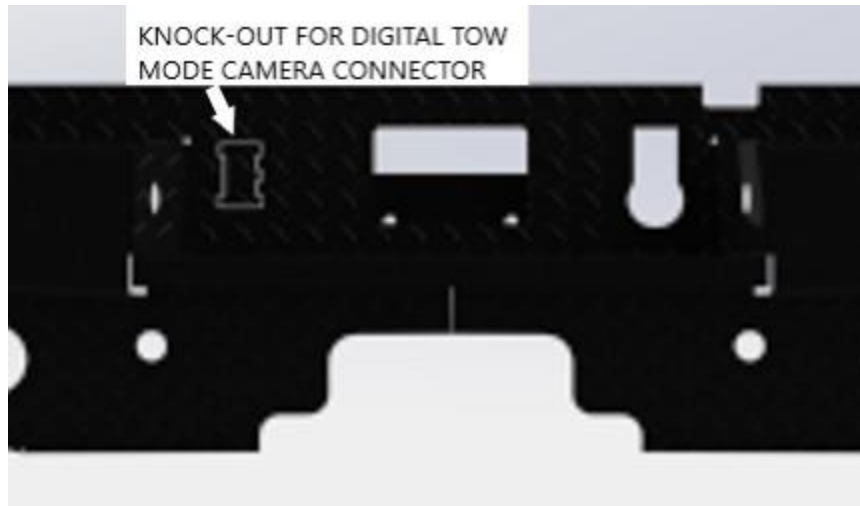


1-800-366-9712

### **INSTALLATION INSTRUCTIONS**

**IMPORTANT NOTICE:** Be sure to inspect and test fit product before having it coated or painted. Ranch Hand will not be responsible for the cost of the coating if any problems with fit or finish are not noted and addressed beforehand.

9. Center bumper from side to side and finish tightening the bolts.
10. Install the reverse lights. Tie into the trailer plug wiring harness.
11. Trucks that have the Digital Tow Mode Camera Connector, remove the “knock-out” located on the left side of the license plate. Use the square clip provided in the bolt package to secure in place.



**MAKE SURE ALL NUTS AND BOLTS ARE TIGHT!**

### ----- **WARNING** -----

Special care should be exercised in the handling, storage and installation of Ranch Hand equipment. The actual weight of each piece of equipment will vary depending on style and model. The weight of the equipment is sufficient in volume to warrant special care, assistance and in some instances, the use of mechanical equipment during the transfer and installation of the equipment. Do not assume a position directly under the equipment during installation. Be sure the equipment has been connected and stabilized during installation to prevent falling or shifting of positions. Periodically check tightness of bolts to make sure they are tight, and unlikely to fail.

Rev. 2022