



1-800-366-9712

INSTALLATION INSTRUCTIONS

IMPORTANT NOTICE: Be sure to inspect and test fit product before having it coated or painted. Ranch Hand will not be responsible for the cost of the coating if any problems with fit or finish are not noted and addressed beforehand.

2019-up RAM 1500 SPORT BACK BUMPER PART # SBD19HBSLE / SBD19HBSL

NOTE: ON TRUCKS WITH SIX SENSORS, YOU WILL NEED TO PUNCH OUT THE “KNOCK-OUT” HOLE IN THE END CAPS.

1. Unplug the license plate lights.
2. Remove the license plate to expose the two 15mm bolts.
3. If a trailer plug is present, remove the plug. Remove the plug by squeezing the metal clips from the backside of the bumper. Pull the plug through the opening of the bumper and unhook the wires.
4. If vehicle is installed with remote tailgate, you will need to disconnect the wire that goes to the remote antenna module that is located on the back side of the license mounting area.
5. Unclip the wiring harness (sensors and license plate wires) from the back side of the bumper.
6. Remove the two 15mm nuts, on each side, that holds the factory bumper to the side bumper brackets.



7. Remove the bumper.
8. You will need to remove the top plastic section of the factory bumper to get to the remote antenna module. The module will be held on by two screws. (Or the tabs surrounding the module can be cut if factory bumper is being discarded).

----- WARNING -----

Special care should be exercised in the handling, storage and installation of Ranch Hand equipment.

The actual weight of each piece of equipment will vary depending on style and model. The weight of the equipment is sufficient in volume to warrant special care, assistance and in some instances, the use of mechanical equipment during the transfer and installation of the equipment.

Do not assume a position directly under the equipment during installation. Be sure the equipment has been connected and stabilized during installation to prevent falling or shifting of positions.

Periodically check tightness of bolts to make sure they are tight, and unlikely to fail.

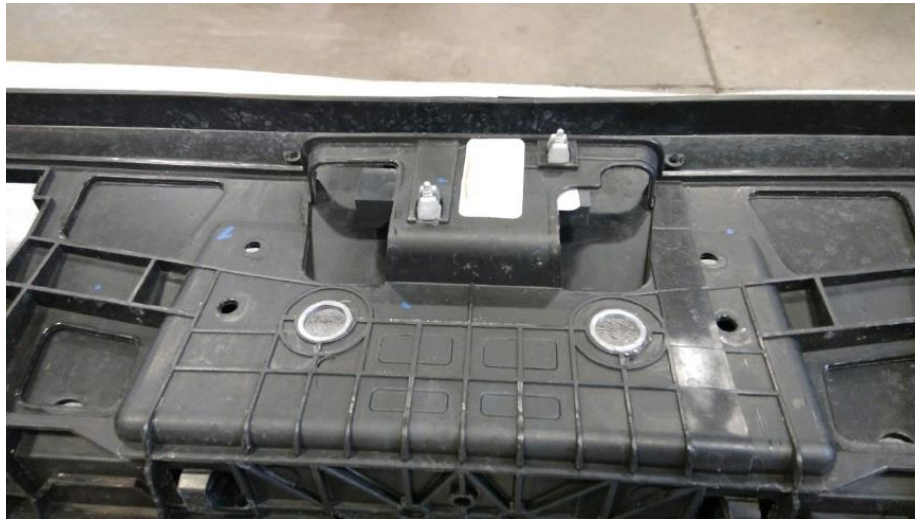
Rev. 2021



1-800-366-9712

INSTALLATION INSTRUCTIONS

IMPORTANT NOTICE: Be sure to inspect and test fit product before having it coated or painted. Ranch Hand will not be responsible for the cost of the coating if any problems with fit or finish are not noted and addressed beforehand.



9. Install the antenna module to the bracket supplied in the bolt package. The bracket will then be mounted (using the two 15mm bolts) to the bracket on the factory receiver hitch.



10. Install the Ranch Hand bumper by using the four 7/16" hardware provided.
11. Center bumper from side to side and tighten bolts.
12. Install the rubber grommets into the holes in the skirt for the sensors. Use a little WD-40 in the grommet to help with install of sensors.
13. Install the license plate and then license plate lights. Wire them into the factory license plate light harness.
14. Install the reverse lights. Tie into the trailer plug wiring harness.
MAKE SURE ALL NUTS AND BOLTS ARE TIGHT!

----- WARNING -----

Special care should be exercised in the handling, storage and installation of Ranch Hand equipment. The actual weight of each piece of equipment will vary depending on style and model. The weight of the equipment is sufficient in volume to warrant special care, assistance and in some instances, the use of mechanical equipment during the transfer and installation of the equipment. Do not assume a position directly under the equipment during installation. Be sure the equipment has been connected and stabilized during installation to prevent falling or shifting of positions. Periodically check tightness of bolts to make sure they are tight, and unlikely to fail.
Rev. 2021